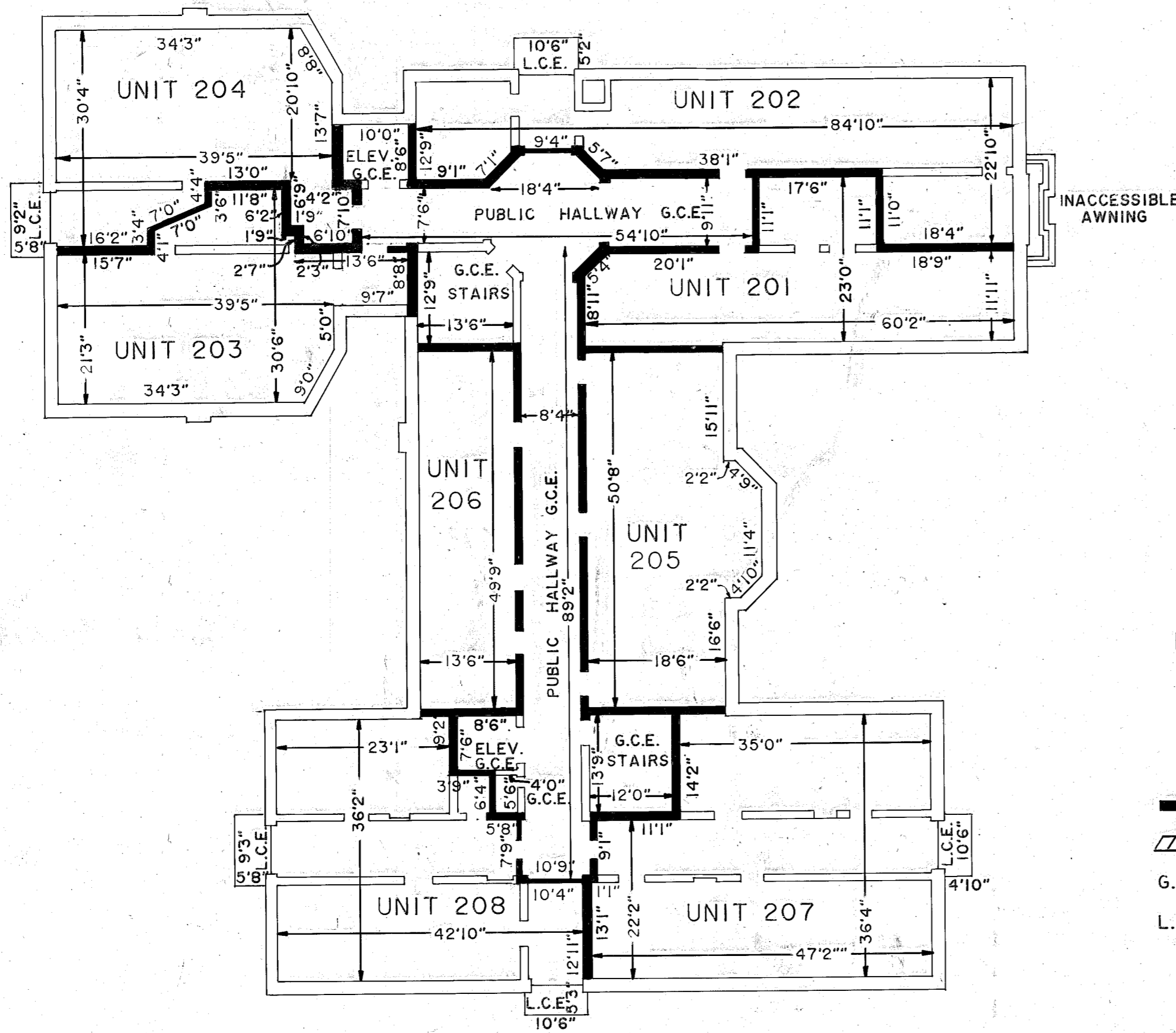


Book 4 Page 54-C

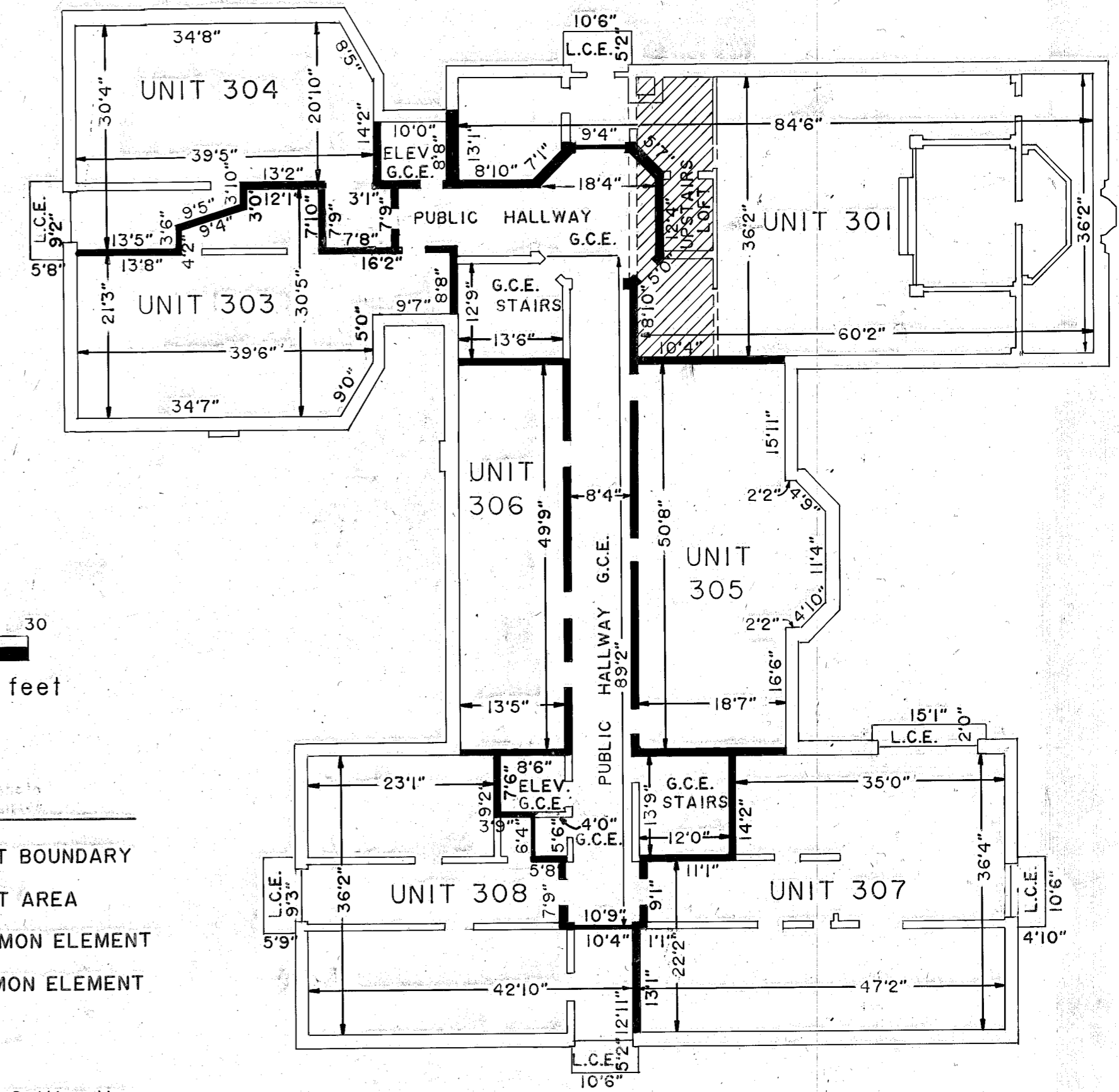


SECOND FLOOR

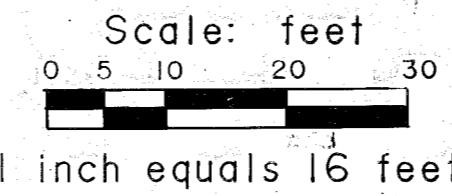
PARKING ASSIGNMENTS

UNIT NO.	PARKING SPACE	UNIT NO.	PARKING SPACE
201	20	301	14
202	21	303	15
203	18	304	13
204	19	305	12
205	16	306	11
206	17	307	7
207	5	308	8
208	6		

Basis of elevations: U.S.C.G.S. Benchmark No. V483, set in 1941 at the North entrance to the Baker Junior High School. Elevation of Benchmark is 3440.04 feet.

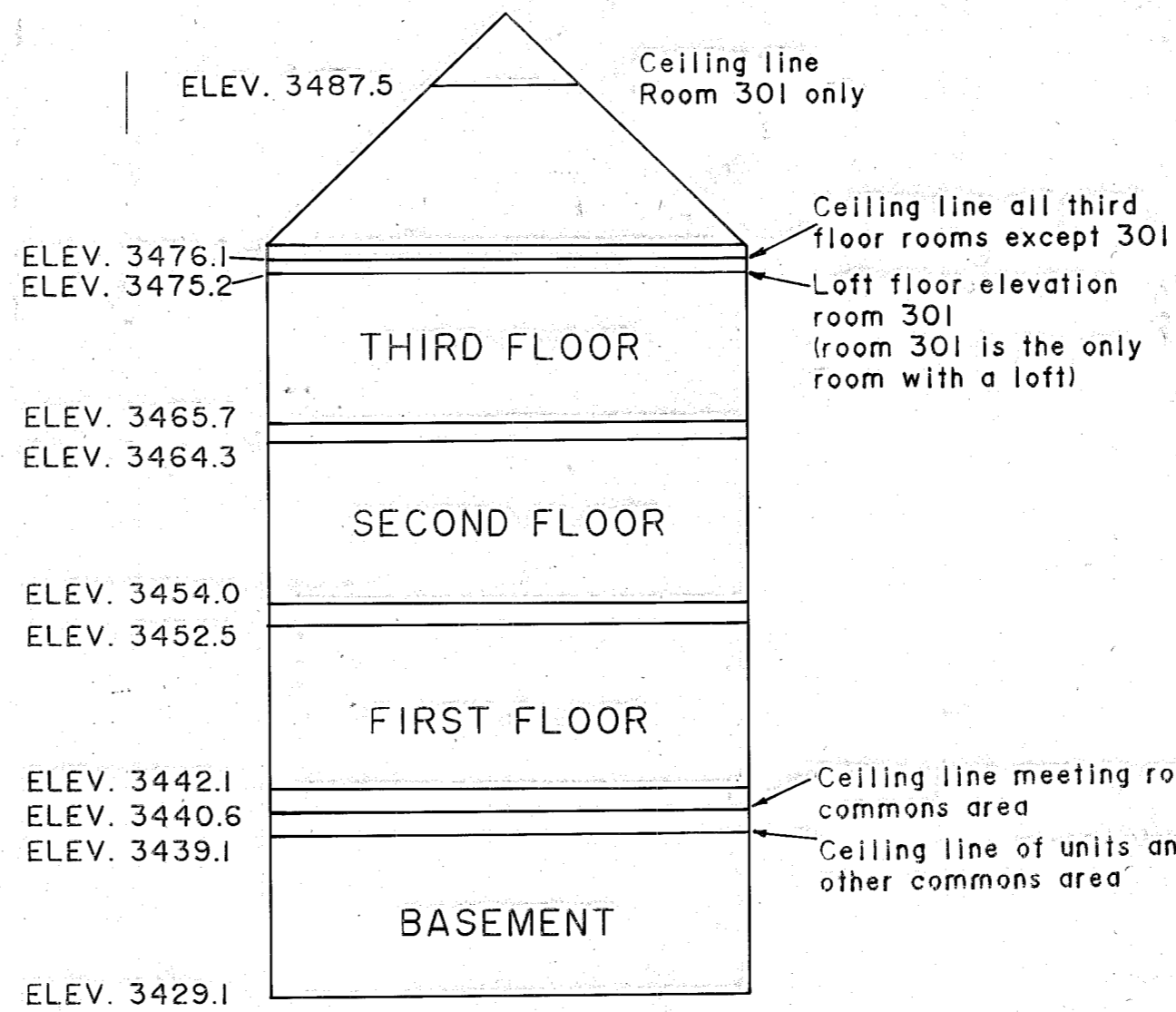


THIRD FLOOR



LEGEND

- INTERIOR UNIT BOUNDARY
- UNIT 301 LOFT AREA
- G.C.E. GENERAL COMMON ELEMENT
- L.C.E. LIMITED COMMON ELEMENT



No Scale

ST. ELIZABETH TOWERS CONDOMINIUM

REGISTERED PROFESSIONAL LAND SURVEYOR
James D. Hanley
OREGON SEPTEMBER 21, 1977
JAMES D. HANLEY
1206