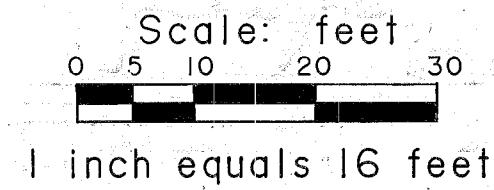
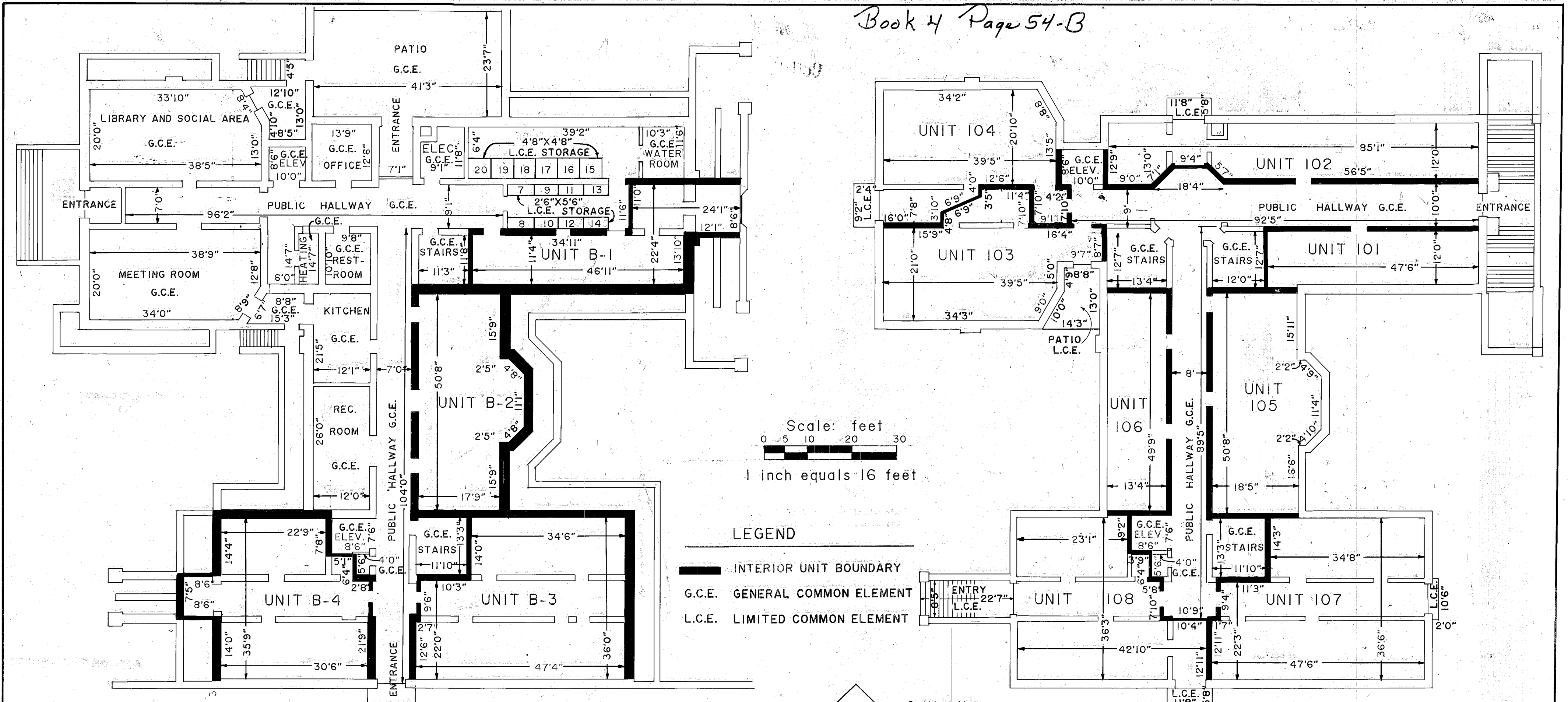


Book 4 Page 54-B



LEGEND

- INTERIOR UNIT BOUNDARY
- G.C.E. GENERAL COMMON ELEMENT
- L.C.E. LIMITED COMMON ELEMENT

BASEMENT

PARKING ASSIGNMENTS

UNIT NO.	PARKING SPACE	UNIT NO.	PARKING SPACE
B-1	26	101	24
B-2	27	102	25
B-3	2	103	22
B-4	3	104	23
		105	9
		106	10
		107	4
		108	1

Basis of elevations: U.S.C.G.S. Benchmark No. V483, set in 1941 at the North entrance to the Baker Junior High School. Elevation of Benchmark is 3440.04 feet.

ELEV. 3487.5 Ceiling line Room 301 only

ELEV. 3476.1
ELEV. 3475.2

THIRD FLOOR

Ceiling line all third floor rooms except 301
Loft floor elevation room 301 (room 301 is the only room with a loft)

ELEV. 3465.7
ELEV. 3464.3

SECOND FLOOR

ELEV. 3454.0
ELEV. 3452.5

FIRST FLOOR

ELEV. 3442.1
ELEV. 3440.6
ELEV. 3439.1

BASEMENT

ELEV. 3429.1

No Scale

FIRST FLOOR

ST. ELIZABETH TOWERS CONDOMINIUM

REGISTERED PROFESSIONAL LAND SURVEYOR

James D. Hanley

OREGON
SEPTEMBER 23 1977
JAMES D. HANLEY
1206