

78-13-124

DEDICATION

We, Forrest Schroeder and Robert Palmer, as co-owners of the land shown on the plat and more particularly described in the surveyors certificate hereunto attached declare the plat of SKYLINE ACRES of Baker County, Oregon, to be a correct plat and hereby dedicate to the public forever Skyline Road as shown on the plat which is USDA-Forest Service Road No. 102B. SKYLINE ACRES shall be restricted by the covenants as recorded in Book 75-16, Pages 051-052, of Baker County records.

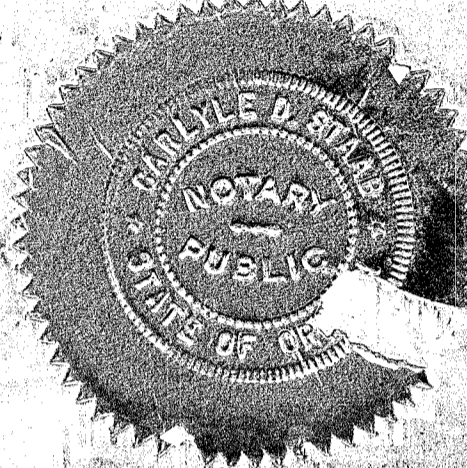
Private use road easements are for the use of the owners of lots in SKYLINE ACRES and BLACK MOUNTAIN RANCH, a subdivision adjacent to the north side of this subdivision, their quest and any service vehicle necessary to the area and may be used for utilities.

Forrest Schroeder Robert Palmer

ACKNOWLEDGEMENT

On this 11 day of MAY, 1977, before me a Notary Public for the State of Oregon, personally appeared Forrest Schroeder and Robert Palmer, known to me, who first being duly sworn, say that they did sign this instrument of their free and voluntary act.

Carlyle D. Stead Notary Public for the State of Oregon My commission expires 11-21-80



SKYLINE ACRES

Subdivision in Sections 17 & 18, Township 11 South, Range 39 East, W.M. Baker County, Oregon

Scale 1" = 300'

APPROVAL

The plat of SKYLINE ACRES was examined and approved.

Denard L. Fuller Baker County Judge
George V. Nicolescu Baker County Commissioner
Fred W. Binger Baker County Commissioner
Wm W. Dingle Baker County Planning Director
James D. Stanley Baker County Surveyor

DATE 3/1/78
11/22/77
Nov 21, 1977

We, Ralph McCray and Alice Saunders, duly elected, acting and qualified Assessor and Treasurer respectively of Baker County, Oregon, hereby certify that we examined the plat of SKYLINE ACRES of Baker County, Oregon, and further certify that all ad valorem taxes and other special assessments due thereon have been paid as required by law and hereby approve said plat.

Ralph I. McCray Baker County Assessor
Alice L. Saunders Baker County Treasurer

LEGEND

- 5/8" x 30" Rebar
2" x 30" Galv. Pipe with 2 1/2" Brass Cap
Monuments by Others
Private Use Roads (60')
Subdivision Lines
Lot Numbers



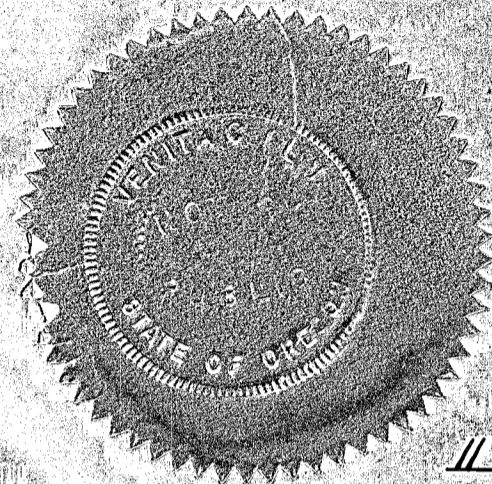
Basis of Bearings Solar Observation

CERTIFICATION

I, Leland Lee Myers, registered professional land surveyor for the State of Oregon being first duly sworn, depose and say that I correctly surveyed and platted the land as represented by the accompanying plat of SKYLINE ACRES, the exterior boundaries of which are described as follows:

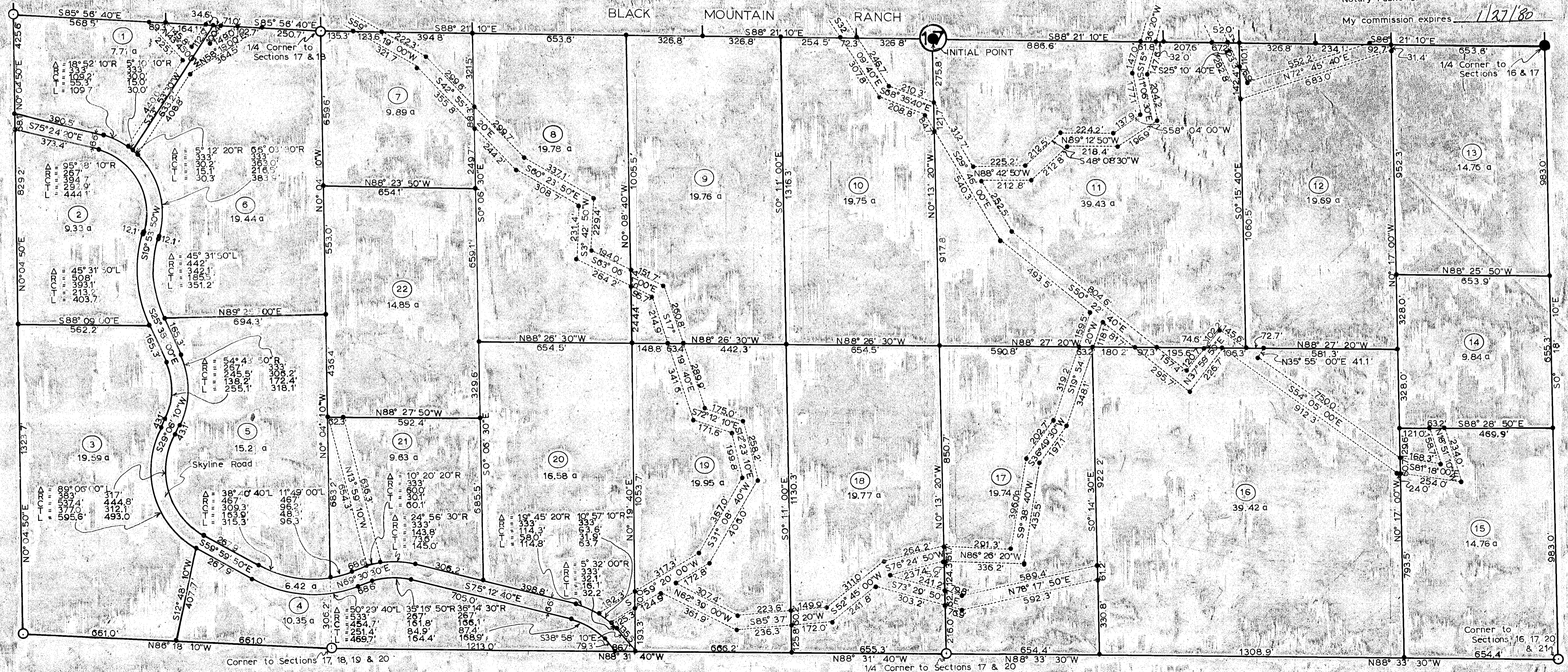
Beginning at the Initial Point which is a 2" galvanized iron pipe 30" long with a 2 1/2" brass cap marked INITIAL POINT, S.A. 1976, set 6' under the ground, and being the center of Section 17, T11S, R39E, WM: thence, S88° 21' 10"E, 2614.3 feet to the 1/4 corner between Sections 16 & 17; thence, S0° 18' 10"E, 2621.4 feet to the corner of Sections 16, 17, 20 & 21; thence, N88° 33' 30"W, 2617.8 feet to the 1/4 corner between Sections 17 & 20; thence, N88° 31' 40"W, 2621.2 feet to the corner of Sections 17, 18, 19 & 20; thence, N86° 18' 10"W, 1322.1 feet to the East 1/16 corner between Sections 18 & 19; thence, N0° 04' 50"E, 2646.1 feet to the Center-East 1/16 corner of Section 18; thence, S85° 56' 40"E, 1315.6 feet to the 1/4 corner of Sections 17 & 18; thence, S88° 21' 10"E, 2614.6 feet to the Initial Point of beginning.

and I have marked on the ground the subdivision as represented by monuments at the corners and angle points in accordance with the law.



REGISTERED PROFESSIONAL LAND SURVEYOR
LELAND LEE MYERS
699

Subscribed and sworn before me this 11 day of May, 1977. Anita Cullum Notary Public for the State of Oregon My commission expires 1/27/80



25737

ANITA C. JOHNSON, Clerk, Baker County, Oregon