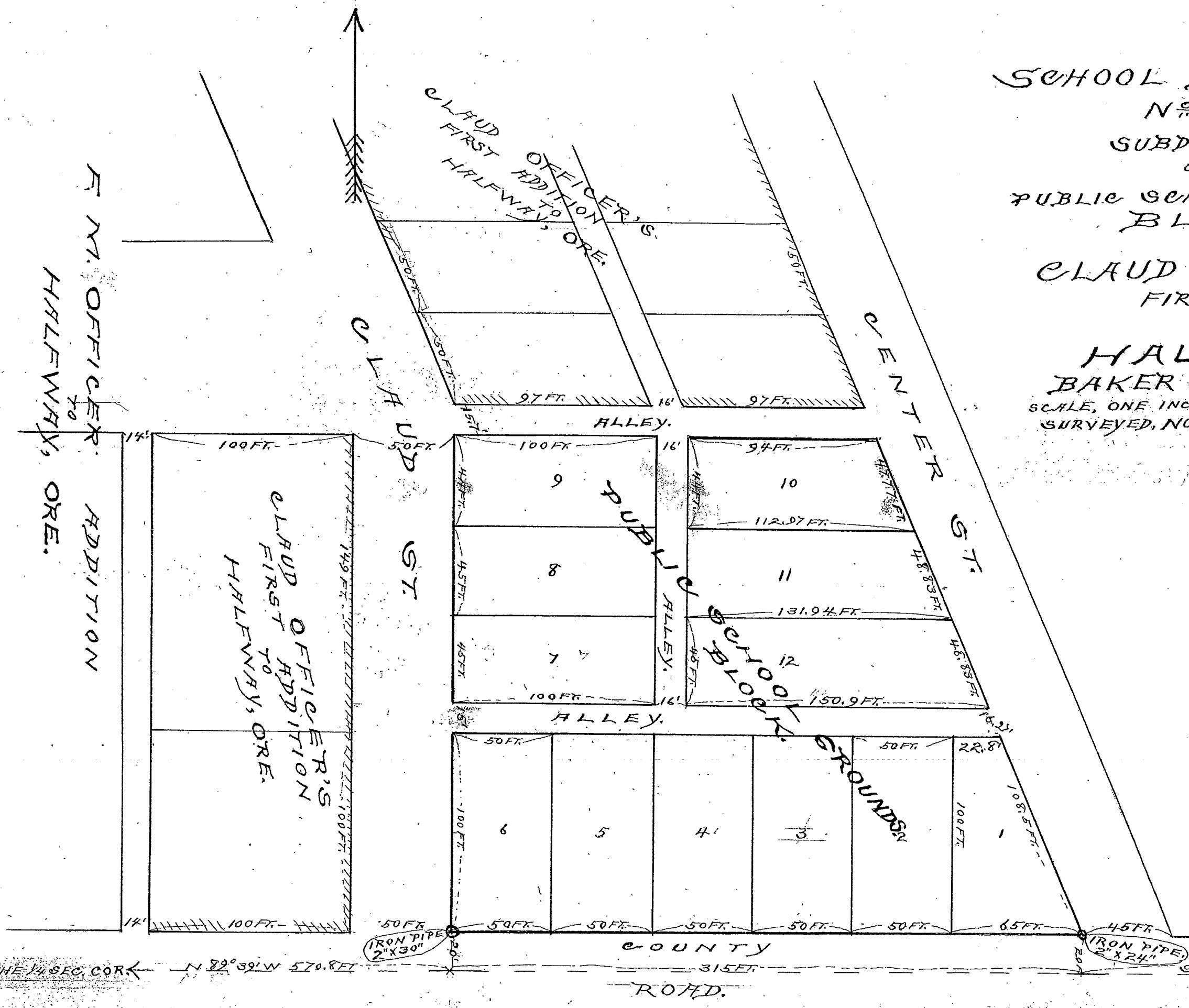


SCHOOL DISTRICT
 No. 61's
 SUBDIVISION
 OF THE
 PUBLIC SCHOOL GROUNDS
 BLOCK
 OF
 CLAUD OFFICER'S
 FIRST ADD.

TO
 HALFWAY,
 BAKER CO., OREGON.

SCALE, ONE INCH = 50 FT.
 SURVEYED, NOV. 4, 1915.

Ora L. Hoffman,
 Surveyor.



FILED

MAY 6 1916

A. B. Combs, Jr.
 CLERK

DEPUTY

TO THE 1/4 SEC. COR. ← N 82° 39' W 570.8 FT

COUNTY ROAD.

→ S 89° 39' E, 1749.6 FT. TO THE
 S. E. COR. OF SEC. 8, T8S, R
 46 E, WILL. ME., OREGON.