

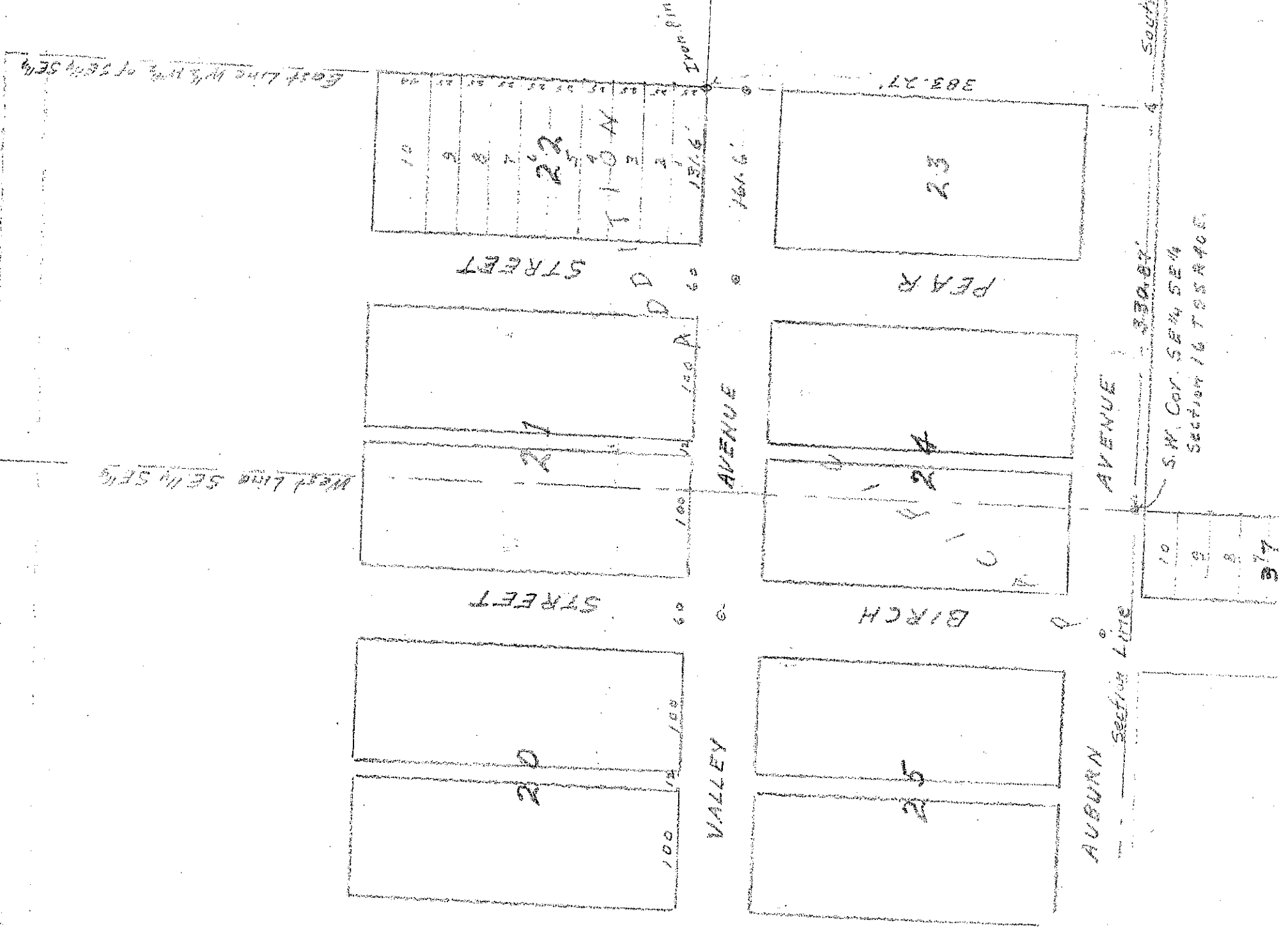
FILED

MAY 27 1941
Lloyd Rex
CLERK

DEPUTY

PLAT
OF

BLOCKS 20 to 25 PACIFIC AVE.
TO BAKER, BAKER CO. OREGON
SHOWING LOCATION OF S.E. CORNER
OF BLOCK 22 WHICH IS 330.87 FT
East and 383.27 ft North of the
S.W. Corner of the S.E. 1/4, SE. 1/4 of
Sec. 16 T. 9 S. R. 40 E. W.M. and on
The East Line of The W. 1/2 W. 1/2, SE. 1/4 S.E. 1/4
Surveyed Nov. 9 to 20, 1945. Scale 1"=100'
By H.L. Melton, Reg. Prof. Eng. Ore No. 1337



for record May
No 108 Book D
E. H. Min

H. L. Melton