

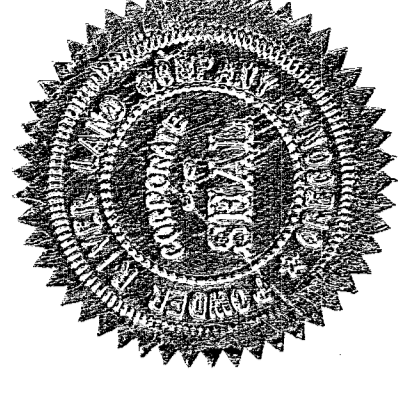
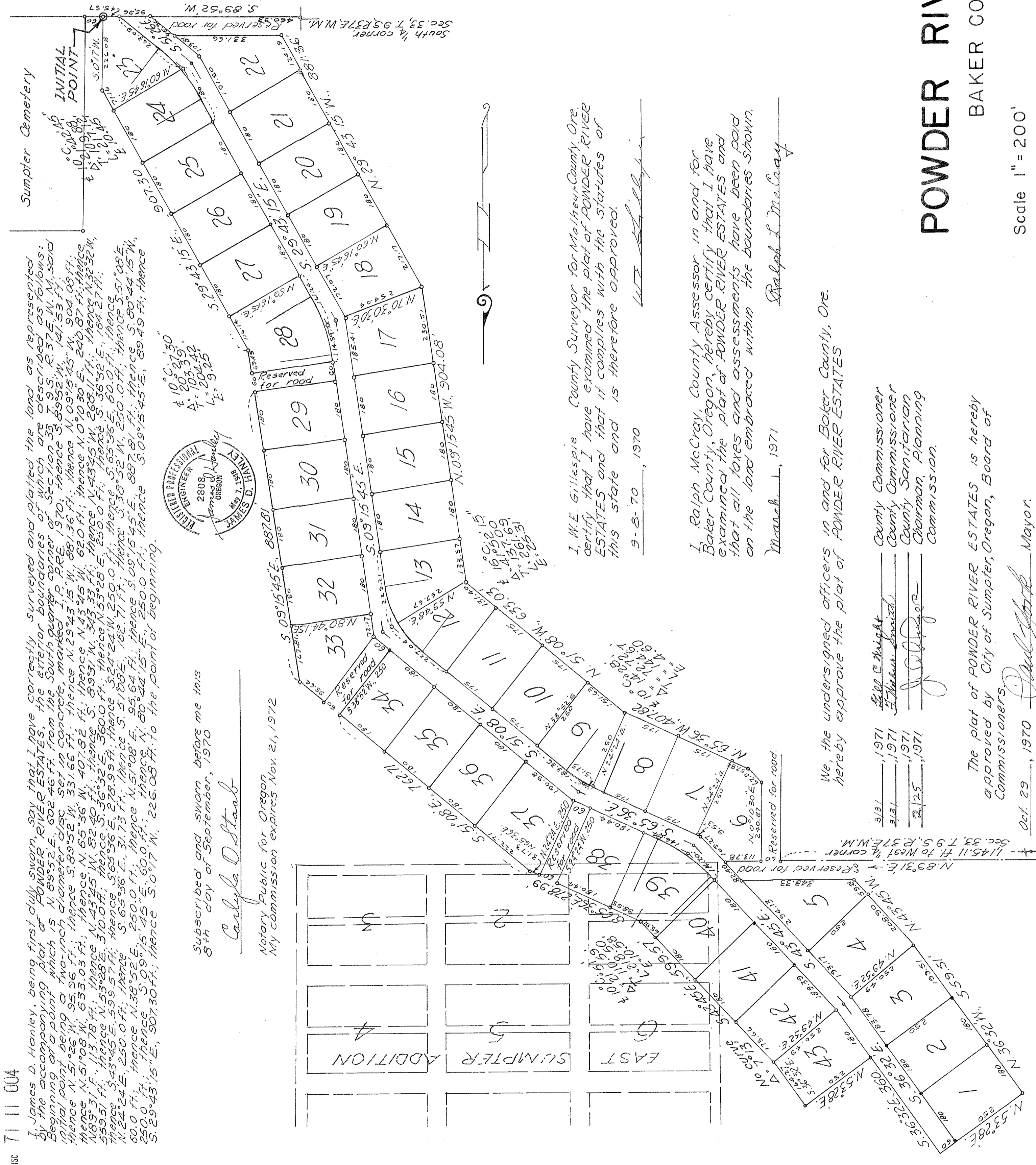
711004

I James D. Hanley, being first duly sworn, say that I have correctly surveyed and platted the land as represented by the accompanying plat of POWDER RIVER ESTATES, the exterior boundaries of which are described as follows: Beginning at a point which is N. 89°52'E. 602.45 ft. from the South quarter corner of Section 33, T. 9 S., R. 37 E., W. 1/2 M., said initial point being a two-inch diameter iron pipe set in concrete, marked P. 1970; thence N. 89°52' W. 141.53 ft., said thence N. 51°08' W. 95.96 ft.; thence S. 89°52' W. 331.66 ft.; thence N. 29°43' 15" W. 881.36 ft.; thence N. 09°15' 45" W. 904.08 ft.; thence N. 51°08' W. 633.03 ft.; thence N. 43°45' W. 82.40 ft.; thence N. 51°08' W. 268.11 ft.; thence S. 36°52' E. 164.27 ft.; thence S. 89°52' W. 360.0 ft.; thence N. 53°28' E. 310.0 ft.; thence S. 27°09' E. 250.0 ft.; thence S. 65°36' E. 60.0 ft.; thence N. 24°24' E. 250.0 ft.; thence S. 65°36' E. 31.73 ft.; thence S. 51°08' E. 162.71 ft.; thence S. 38°52' W. 250.0 ft.; thence S. 51°08' E. 80°44' 15" W. 80.0 ft.; thence N. 38°52' E. 250.0 ft.; thence N. 51°08' E. 95.64 ft.; thence S. 09°15' 45" E. 887.81 ft.; thence S. 09°15' 45" E. 88.49 ft.; thence S. 29°43' 15" E. 507.30 ft.; thence S. 09°15' 45" E. 250.0 ft.; thence N. 80°24' 15" E. 250.0 ft.; thence N. 51°08' E. 226.08 ft. to the point of beginning.

Subscribed and sworn before me this 8th day of September, 1970

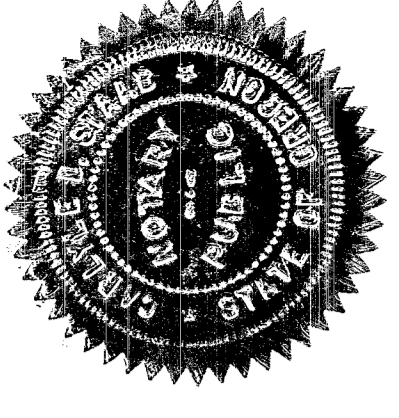
Carlyle O. Stead

Notary Public for Oregon
My commission expires Nov. 21, 1972



STATE OF OREGON) SS
On September 2, 1970, before me did personally appear the within named Bob E. Berry and Robert E. Serger and acknowledged to me that they executed the same freely and voluntarily.

Carlyle O. Stead
Notary Public for Oregon
My commission expires:
November 21, 1972



I, W.E. Gillespie County Surveyor for Malheur County, Ore. certify that I have examined the plat of POWDER RIVER ESTATES and that it complies with the Statutes of this state and is therefore approved.
9-8-70, 1970
W.E. Gillespie

I, Ralph McCray, County Assessor in and for Baker County, Oregon, hereby certify that I have examined the plat of POWDER RIVER ESTATES and that all taxes and assessments have been paid on the land embraced within the boundaries shown.
March 1, 1971
Ralph L. McCray

We, the undersigned officers in and for Baker County, Ore. hereby approve the plat of POWDER RIVER ESTATES

3/1/1971 [Signature] County Commissioner
3/3/1971 [Signature] County Commissioner
3/25/1971 [Signature] Chairman, Planning Commission.

The plat of POWDER RIVER ESTATES is hereby approved by City of Sumpter, Oregon, Board of Commissioners.

Oct 29, 1970 [Signature] Mayor.

POWDER RIVER ESTATES

BAKER COUNTY, ORE.

Scale 1" = 200'

August, 1970