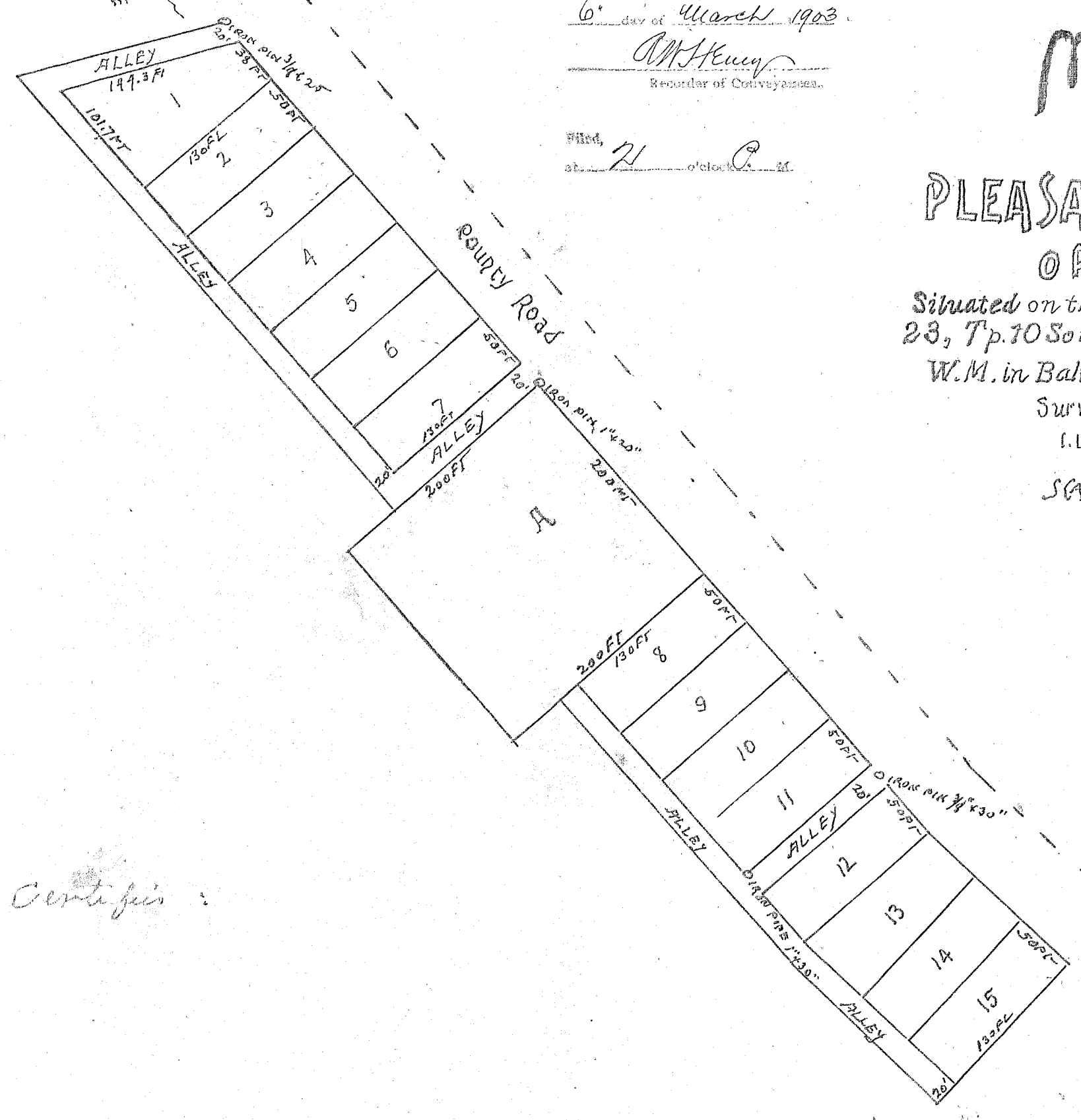


N 35° 20' W 1318 FT 15"
1/4 Sec. 23, T. 10 S., R. 41 E.
S.E.C. 23, T. 10 S., R. 41 E.
WILLIAMS

STATE OF OREGON,
County of Baker, } ss.
I certify that the within was received
and duly recorded by me in Baker
County Records, Book of Deeds
Vol. 53 Page 542 on the
6 day of March 1903
W. H. Keagy
Recorder of Conveyances.

Filed, 71
at 9 o'clock A.M.

MAP
of
PLEASANT VALLEY,
OREGON.
Situated on the NE 1/4 of Section
23, Tp. 10 South, Range 41 East
W.M. in Baker County, Oregon.
Surveyed, Feb. 1903.
I. L. HOFFMAN, Sur.
SCALE 100 FT = 1 INCH.



This certifies: