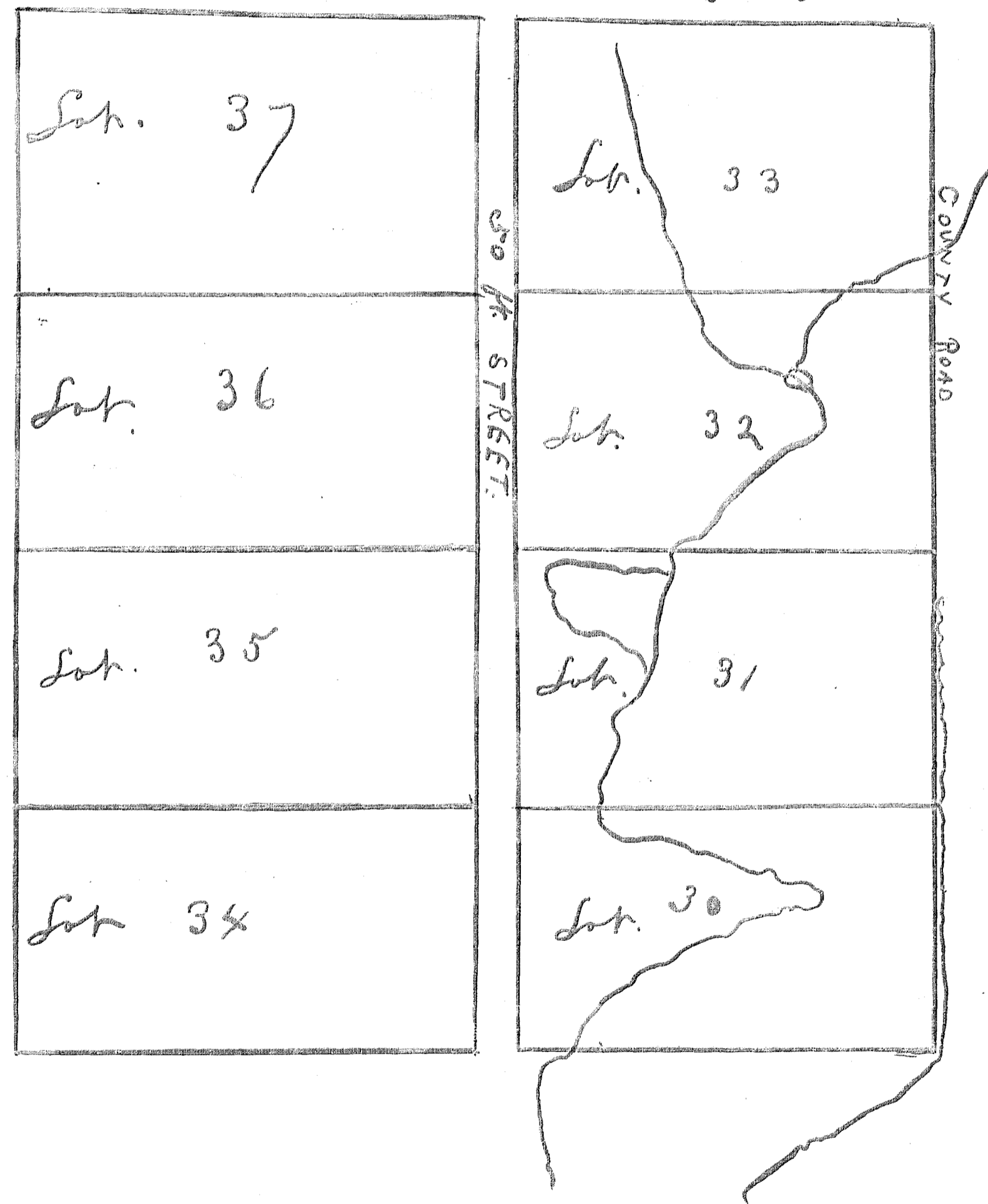


"PATTERSON'S"
 HOMESTEAD TRACT OF 20 ACRE TRACTS.
 SUB DIVISION. } size about 660, width 1275 long
 OF S.W. 1/4 } Reserving soft street
 OF SEC. 3, T. 9. S., R. 40, E. } as shown on map below
 North + South



Filed January 16, 1901, 11 A.M.
 L. W. James
 Commissioner