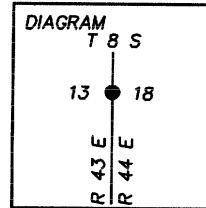


History of Original Corner Establishment:

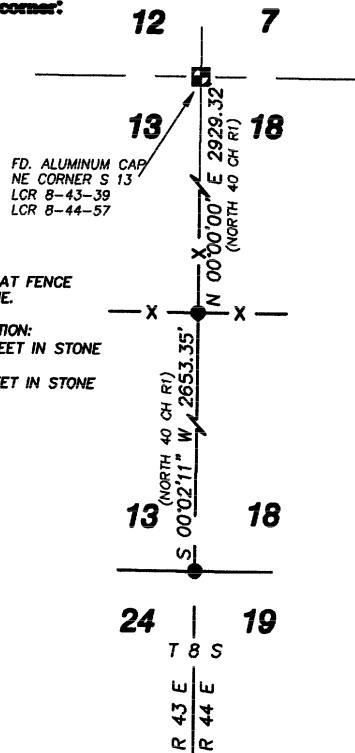
TOWNSHIP LINE PLAT AND NOTES SURVEYED BY WALDEN
IN 1873 UNDER CONTRACT NO. 198.



Description of corner evidence found:

FOUND ORIGINAL STONE 10"x6"x12" MARKED "1\4" IN N-S-E-W FENCE
FOUND MOUND OF STONE NE AND SW OF 1\4 STONE BOTH 3'X3'

**Description of monument and accessories I established
to perpetuate the original location of this corner:**



FD. ALUMINUM CAP
NE CORNER S 13
LCR 8-43-39
LCR 8-44-57

SET 5/8" X 30' STEEL PIN WITH CAP PLA 66818 AT FENCE
INTERSECTION IN THE LOCATION OF FOUND STONE.

ACCESSORIES ESTABLISHED FROM CORNER LOCATION:
SET 5/8" X 30" STEEL PIN S 44°38'25" W 5.57 FEET IN STONE
MOUND.
SET 5/8" X 30" STEEL PIN S 47°15'11" W 4.78 FEET IN STONE
MOUND.

I, STEVEN C. WELLINGTON CERTIFY THAT THIS CORNER
WAS PROPERLY REESTABLISHED BY MIKE ENGBRITSON
AND JEFF ENGBRITSON ON SEPTEMBER 5, 2012.

FILED _____
BAKER COUNTY SURVEYOR
SURVEY NO. _____
CORNER PRES. NO. _____
CORNER PRES. NO. _____