

History of Original Corner Establishment:

T8S R43E SUBDIVISION PLAT AND NOTES SURVEYED BY BARR
IN 1880 UNDER CONTRACT NO. 372.

DIAGRAM

T 8 S R 43 E

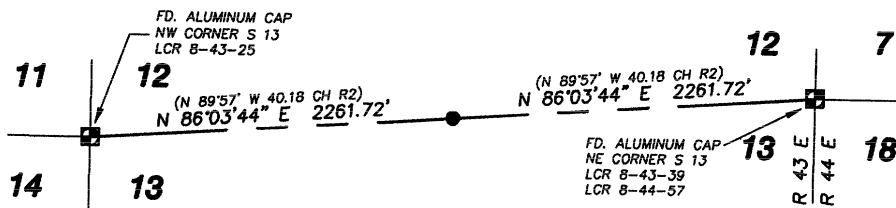
12

13

Description of corner evidence found:

NO ORIGINAL EVIDENCE FOUND.

**Description of monument and accessories I established
to perpetuate the original location of this corner:**



SET 5/8" X 30" STEEL PIN WITH CAP PLA 66818 PLACED
STONES, STEEL POST AND CORNER TAG IN STONES.

ACCESSORIES ESTABLISHED FROM CORNER LOCATION:
SET 5/8" X 30" STEEL PIN N 50°05'56" E 14.34 FEET
SET NAIL & SHINNER IN FENCE POST S 72°22'59" W 45.36
FEET

I, STEVEN C. WELLINGTON CERTIFY THAT THIS CORNER
WAS PROPERLY REESTABLISHED BY MIKE ENGBRITSON
AND JEFF ENGBRITSON ON SEPTEMBER 5, 2012.

FILED _____
BAKER COUNTY SURVEYOR
SURVEY NO. _____
CORNER PRES. NO. _____