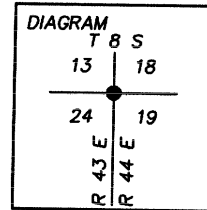


History of Original Corner Establishment:

TOWNSHIP LINE PLAT AND NOTES SURVEYED BY WALDEN
IN 1873 UNDER CONTRACT NO. 198.



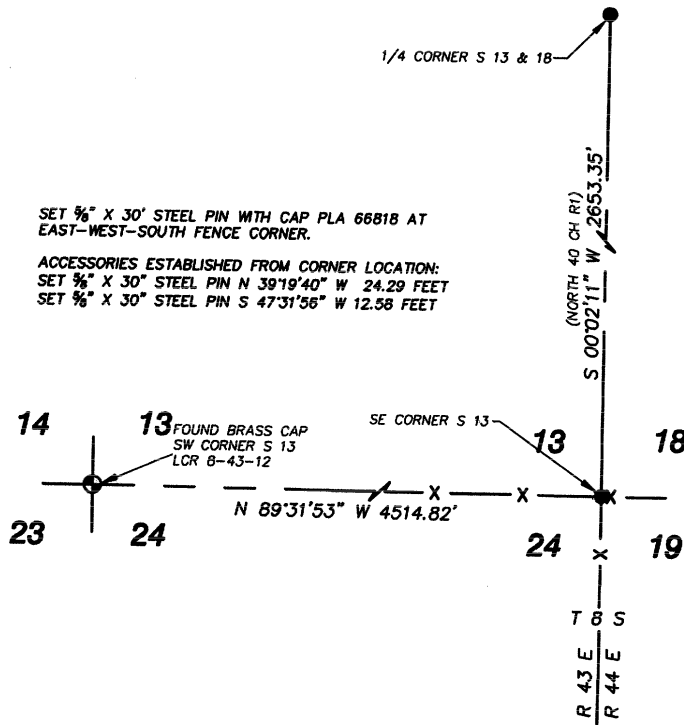
Description of corner evidence found:

NO ORIGINAL EVIDENCE FOUND. FOUND 3X5 METAL TAG IN FENCE POST.

Description of monument and accessories I established to perpetuate the original location of this corner:

SET 5/8" X 30' STEEL PIN WITH CAP PLA 68818 AT
EAST-WEST-SOUTH FENCE CORNER.

ACCESSORIES ESTABLISHED FROM CORNER LOCATION:
SET 5/8" X 30" STEEL PIN N 39°19'40" W 24.29 FEET
SET 5/8" X 30" STEEL PIN S 47°31'58" W 12.58 FEET



I, STEVEN C. WELLINGTON CERTIFY THAT THIS CORNER
WAS PROPERLY REESTABLISHED BY MIKE ENGBRITSON
AND JEFF ENGBRITSON ON SEPTEMBER 5, 2012.

FILED _____
BAKER COUNTY SURVEYOR
SURVEY NO. _____
CORNER PRES. NO. _____
CORNER PRES. NO. _____