

MAP of Major Partition

In Portions of Sections 25 & 26, T8S, R38E, WM

Owner-Partitioner
Robert K. Street
Box 365
Baker, Oregon 97814

Surveyed
July 28, 1975
Scale 1" = 200'



Basis of Bearings
Solar Observation

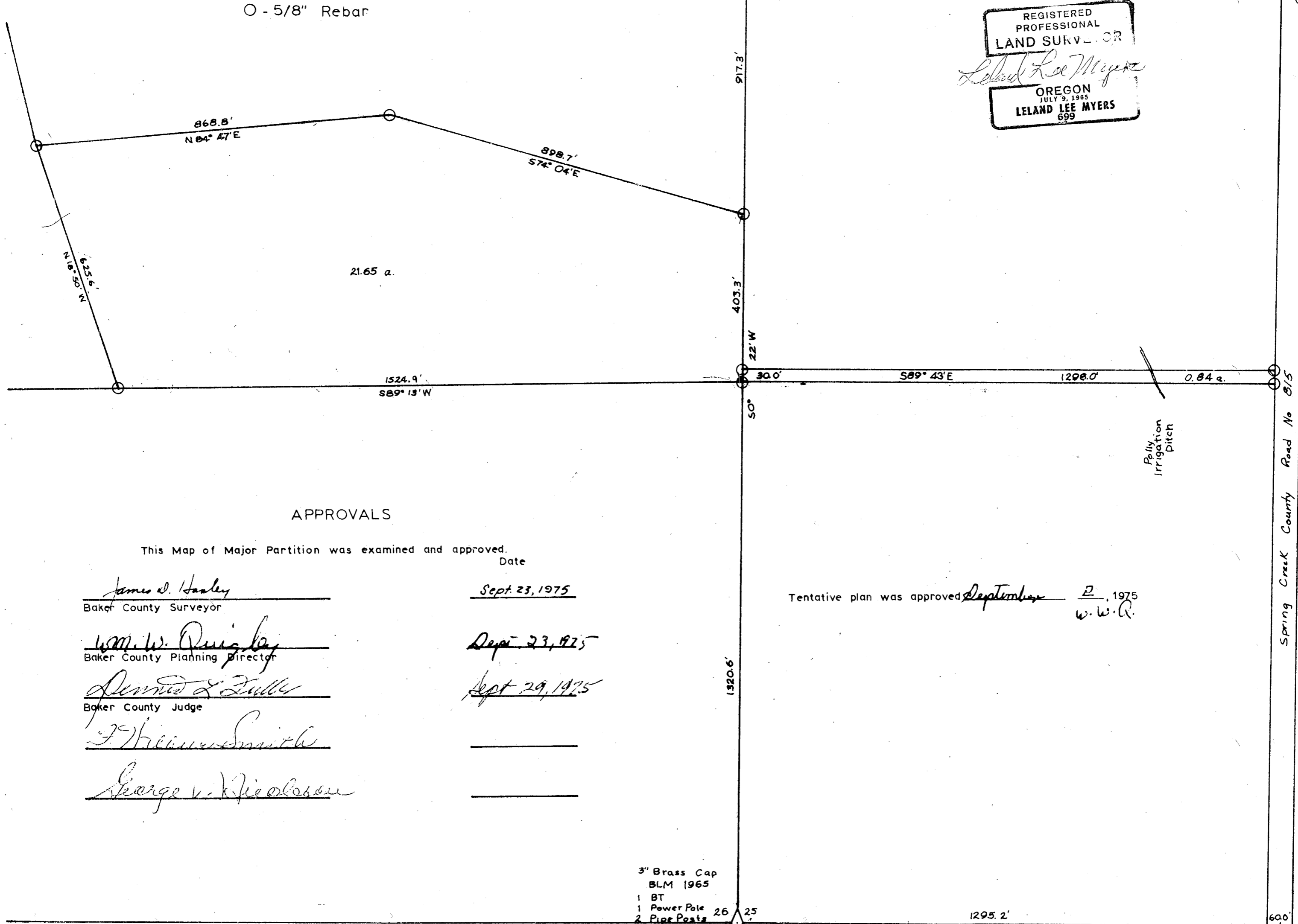
CERTIFICATION

I, Leland Lee Myers, a registered professional land surveyor in the State of Oregon, hereby certify that this map correctly represents a survey performed by me and monuments have been placed at all angle points and corners of this major partition in accordance with law.

REGISTERED
PROFESSIONAL
LAND SURVEYOR

Leland Lee Myers
OREGON
JULY 9, 1965
LELAND LEE MYERS
699

O - 5/8" Rebar



APPROVALS

This Map of Major Partition was examined and approved. Date

James D. Haaley
Baker County Surveyor

Sept 23, 1975

Wm. W. Quigley
Baker County Planning Director

Sept 23, 1975

James D. Fuller
Baker County Judge

Sept 29, 1975

Thomas Smith

George V. Kiecolt

Tentative plan was approved September 2, 1975
w.w.r.

3" Brass Cap
BLM 1965
1 BT
1 Power Pole
2 Pipe Posts

26 25
35 36

1295.2'
S89° 42' E

600'

6065 Oct 27, 1975