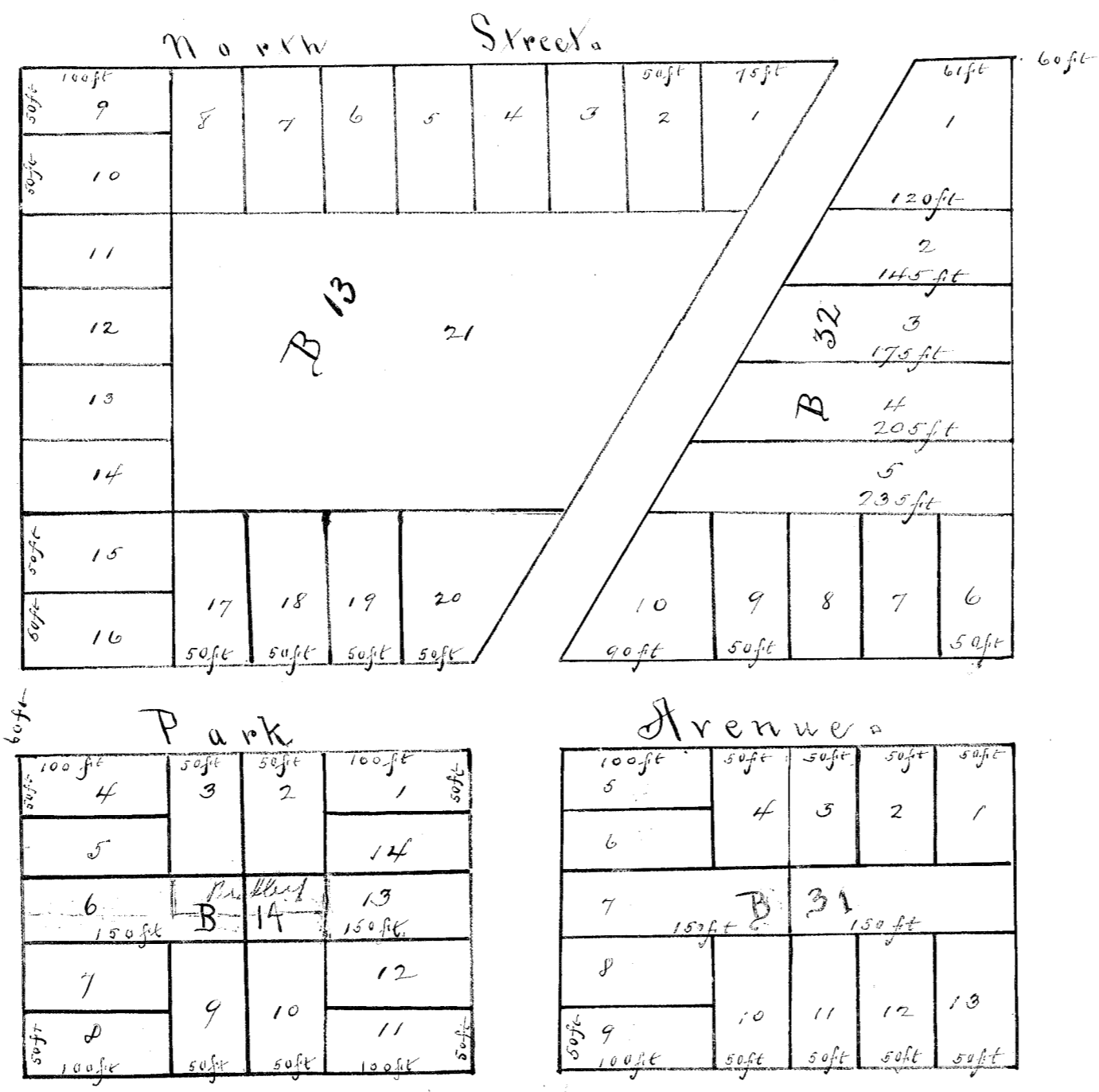


Plan of J.P. Atwoods second addition to  
 Baker City situated  
 on the SW quarter of the 16<sup>th</sup> section of Township  
 No Nine South in Range No Forty, East of  
 the Willamette Meridian in Baker County  
 State of Oregon.

Surveyed and Platted February 1887.  
 By C.M. Fosser C.E.  
 Scale 100 feet to an inch.



*unplatted*