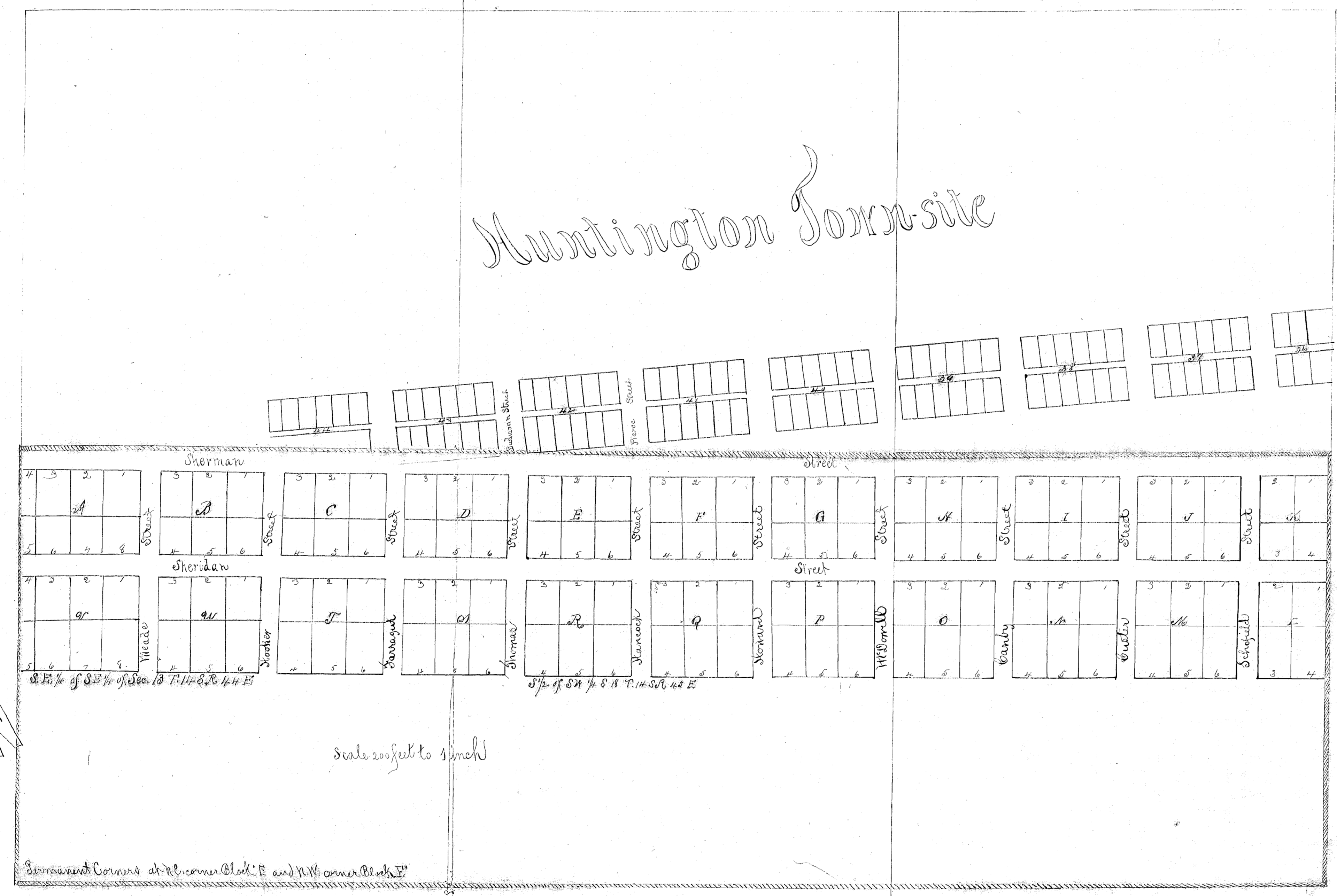


MAP
HOWARD'S
ADDITION
to
HUNTINGTON

Baker County
OREGON

Dimensions of Lots - Front row in Blocks A to S inclusive 100 x 140 feet
 Back 100 x 100
 In Blocks T to V inclusive 100 x 140
 Streets 60 feet wide



Filed for Record Decem 24th 1886
 E. H. Mix
 Clerk
 By J. W. Gray Deputy

Know All Men by these Presents
 That we Emory Howard and A. W. Huntington both of Baker County Oregon, owners and holders of the legal title to all and singular the lands by us laid out, mapped and platted upon the foregoing map of Howard's Addition to Huntington Baker County Oregon, being parts of Section Thirteen (13) Township Twentieth (20) South of Range Forty four (44) East and Section Eighteen (18) Township Twentieth (20) South of Range Forty four (44) East, do hereby dedicate to public use all that portion of the lands so platted, which are represented upon said map as streets or alleys, to the full extent and dimensions as represented upon said map.
 Witness our hands and seals this Twentieth day of December A.D. 1886
 Emory G. Howard Seal
 A. W. Huntington Seal

State of Oregon (sd)
 County of Baker (sd)
 This certifies that on this Twenty third (23rd) day of December A.D. 1886 before me a Justice of the Peace in and for Huntington Baker County and State of Oregon personally came Emory Howard and A. W. Huntington to me personally known to be the persons described in and who executed the foregoing declaration of dedication to the foregoing map of Howard's Addition to Huntington Baker County Oregon and acknowledged the said map to be their act and deed, and that they executed the foregoing declaration of dedication for the uses and purposes therein expressed.
 Subscribed and sworn to before me this day in this certificate first above written
 J. W. Gray Justice of the Peace
 In Huntington Baker County Oregon