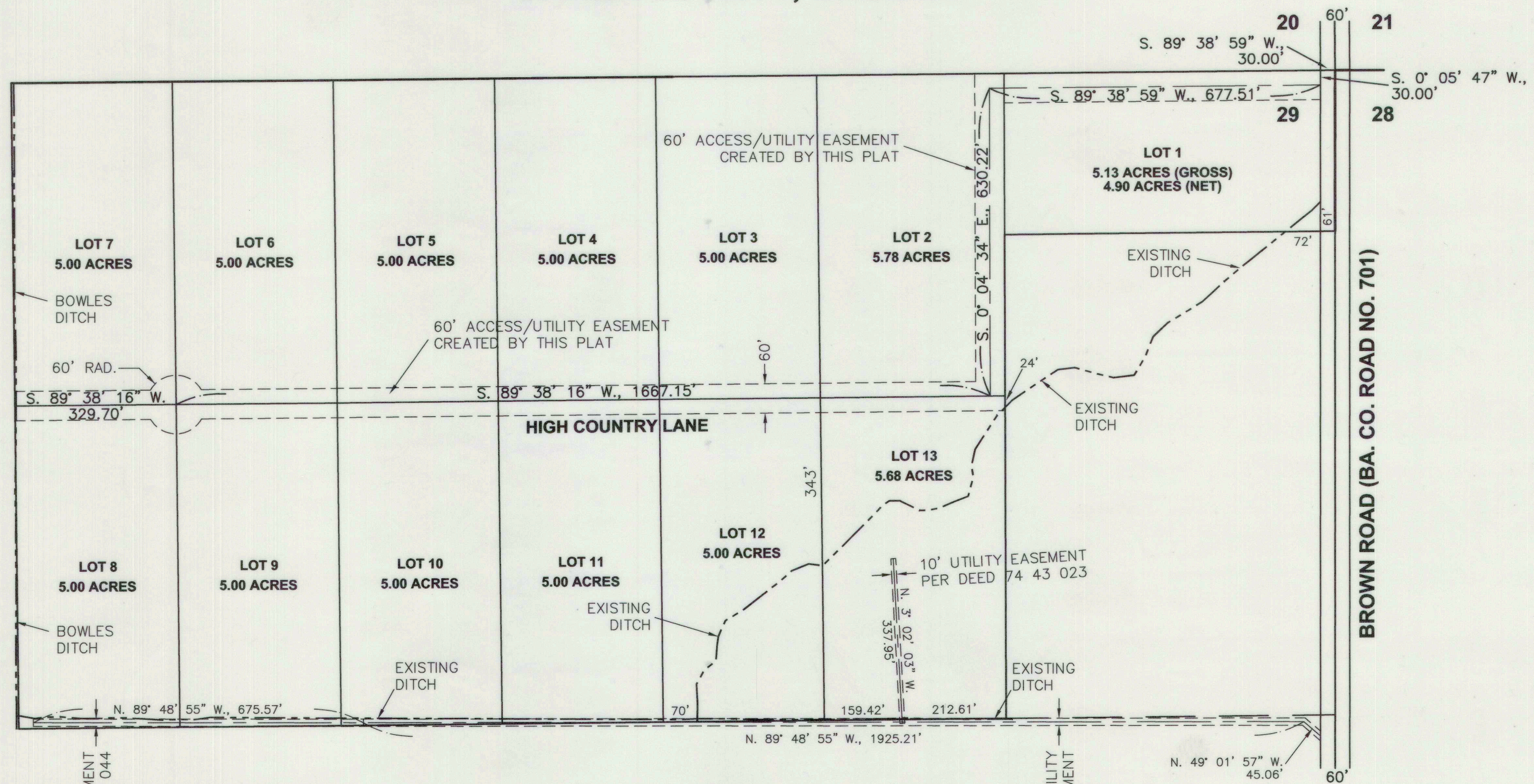


# HIGH COUNTRY ESTATES

LOCATED IN THE  
NORTH HALF OF THE NORTHEAST QUARTER OF SECTION 29,  
TOWNSHIP 8 SOUTH, RANGE 39 EAST, WILLAMETTE MERIDIAN  
BAKER COUNTY, OREGON



**BASIS OF BEARING**  
Ba. Co. Plat No. P2002-005  
East line of the NE 1/4, Sec. 29  
bears N. 0° 05' 47" E.

SCALE: 1" = 200'

## EASEMENT LOCATIONS

### LEGEND

- Easement Centerline.
- - - - - Easement Boundary.

## HANLEY ENGINEERING, INC.

P.O. BOX 701, 2043 MAIN STREET, BAKER CITY, OREGON 97814 (541) 523-3803

REGISTERED  
PROFESSIONAL  
LAND SURVEYOR

*Thomas J. Hanley*

OREGON  
JULY 13, 1979  
THOMAS J. HANLEY  
1817

Renews June 30, 2005