

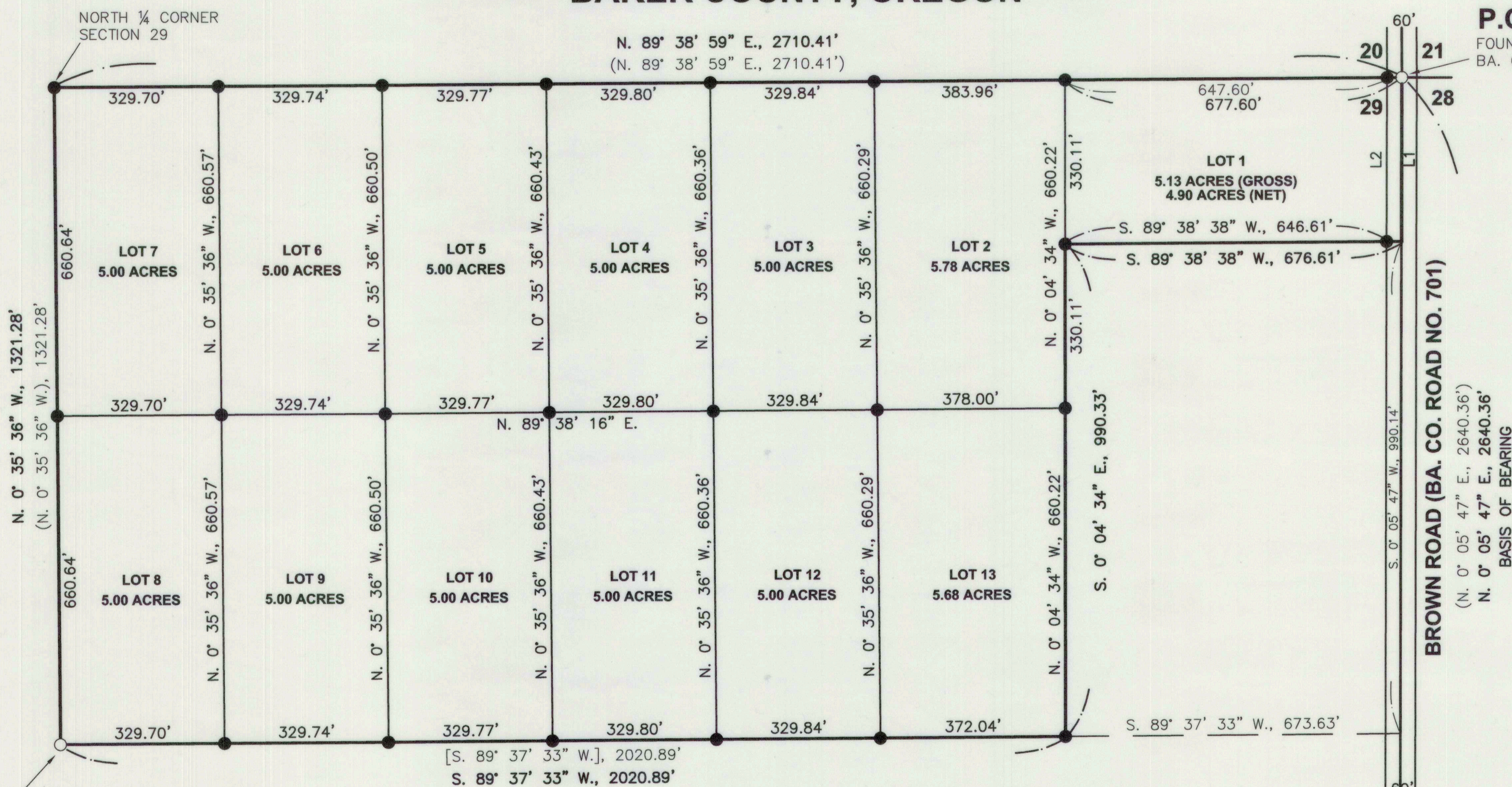
# HIGH COUNTRY ESTATES

LOCATED IN THE  
 NORTH HALF OF THE NORTHEAST QUARTER OF SECTION 29,  
 TOWNSHIP 8 SOUTH, RANGE 39 EAST, WILLAMETTE MERIDIAN  
 BAKER COUNTY, OREGON

P.O.B.  
 FOUND 1/2" REBAR PER  
 BA. CO. SUR. NO. 8-39-7

**BASIS OF BEARING**  
 Ba. Co. Part. Plat No. P2002-005  
 East line of the NE 1/4, Sec. 29  
 bears N. 0° 05' 47" E.

**SCALE: 1" = 200'**



FOUND 5/8" REBAR SET BY  
 BA. CO. SUR. NO. 8-39-44  
 0.22' SOUTH & 0.17' EAST  
 OF TRUE CORNER POSITION

**LINE TABLE**

LINE	BEARING	DISTANCE
L1	S. 0° 05' 47" W.	330.05'
L2	S. 0° 05' 47" W.	330.05'

**LEGEND**

- Set 5/8" x 30" rebar with plastic cap marked "HANLEY ENGR. PLS 1817".
- ⊙ Found, 5/8" rebar with plastic cap marked "HANLEY ENGR. PLS 1206", set by Ba. Co. Partition Plat No. P2002-005.
- Found, monument as noted.
- ( ) Record Data Per Ba. Co. Partition Plat No. P2002-005.
- [ ] Record Data Per Ba. Co. Partition Plat No. P2003-009.

**HANLEY ENGINEERING, INC.**

P.O. BOX 701, 2043 MAIN STREET, BAKER CITY, OREGON 97814 (541) 523-3803

REGISTERED  
 PROFESSIONAL  
 LAND SURVEYOR  
*Thomas J. Hanley*  
 OREGON  
 JULY 13, 1979  
 THOMAS J. HANLEY  
 1817

Renews June 30, 2005