

# HIGH COUNTRY ESTATES

LOCATED IN THE  
NORTH HALF OF THE NORTHEAST QUARTER OF SECTION 29,  
TOWNSHIP 8 SOUTH, RANGE 39 EAST, WILLAMETTE MERIDIAN  
BAKER COUNTY, OREGON

T. 8 S., R. 39 E., W.M.  
SECTION 29

**SHEET 1 OF 4**

TITLE SHEET, SHEET INDEX, AND VICINITY MAP

**SHEET 2 OF 4**

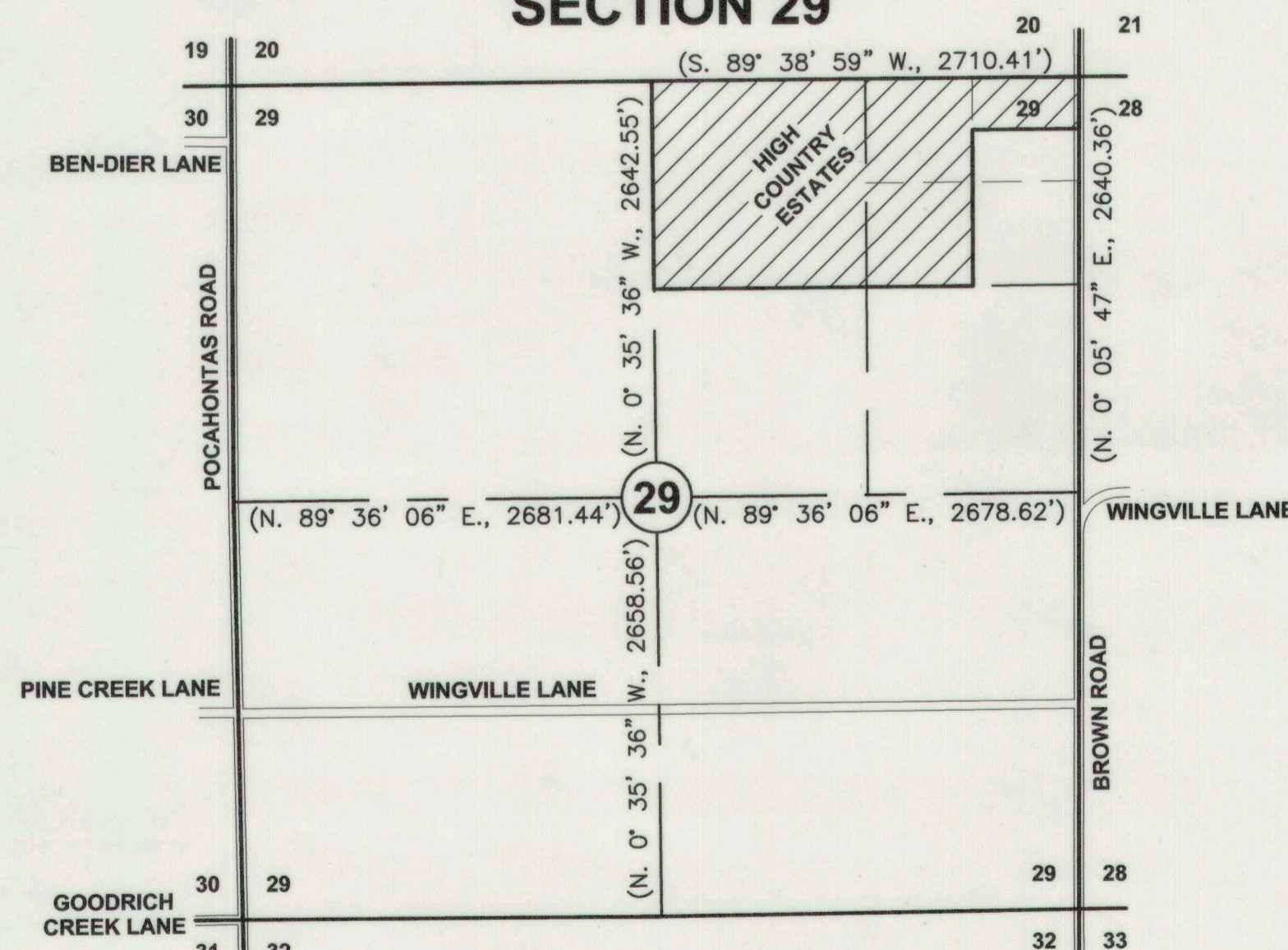
PLAT OF HIGH COUNTRY ESTATES

**SHEET 3 OF 4**

PLAT OF HIGH COUNTRY ESTATES SHOWING EASEMENT LOCATIONS

**SHEET 4 OF 4**

EASEMENTS/EXCEPTIONS, ACCESS/UTILITY EASEMENT, NARRATIVE,  
DITCH EASEMENT, REFERENCES, SURVEYOR'S CERTIFICATE,  
DECLARATION, ACKNOWLEDGMENT, AND APPROVALS.



**VICINITY MAP**  
SCALE: 1" = 1000'

**LEGEND**

( ) Record Data Per Ba. Co. Partition Plat No. P2002-005.

**HANLEY ENGINEERING, INC.**

P.O. BOX 701, 2043 MAIN STREET, BAKER CITY, OREGON 97814 (541) 523-3803

REGISTERED  
PROFESSIONAL  
LAND SURVEYOR

*Thomas J. Hanley*

OREGON  
JULY 13, 1979  
THOMAS J. HANLEY  
1817

Renews June 30, 2005