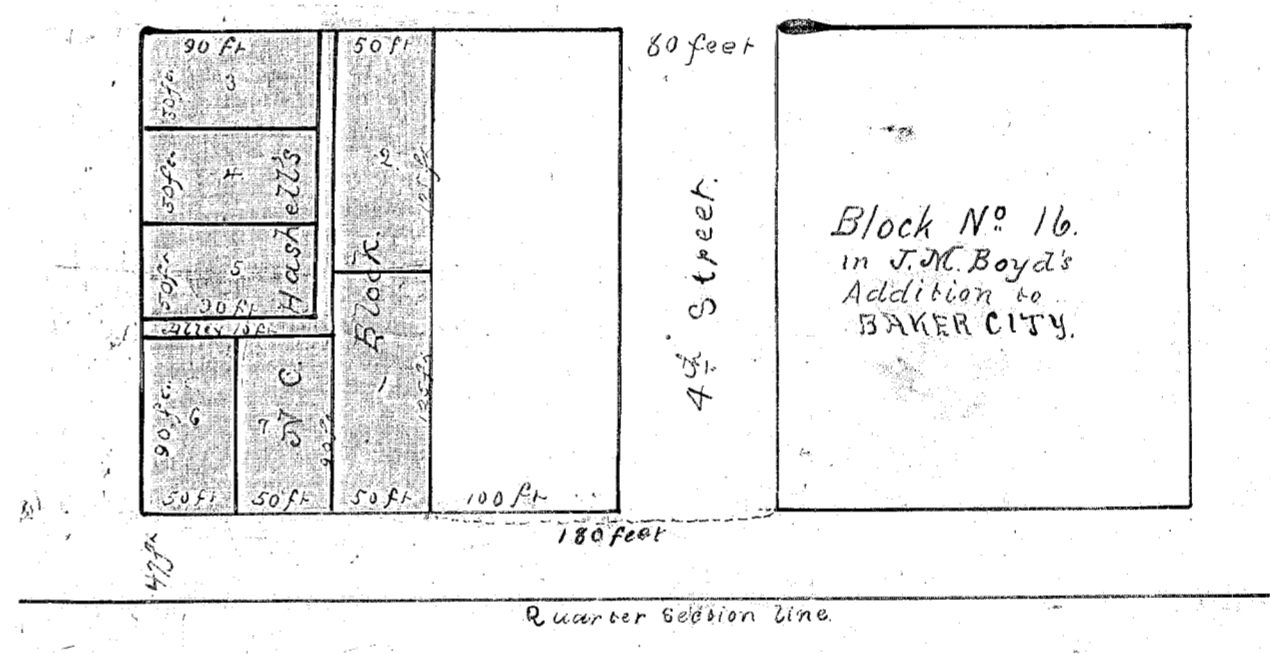


Diagram of J. C. Haskell's Block



See PB - 98 - Page 206.



STATE OF OREGON, }
 COUNTY OF BAKER. }
 I certify that the within was received and duly recorded by me in
 Baker
 County Records, Book of Deeds
 Vol. 211 Page 522 on the
 4th day of May 1888.
 E. H. May
 County Clerk.

DIAGRAM
 of
 J. C. Haskell's Block situated
 on the S.W. 1/4 of S.E. 1/4 of Section
 No. 17 in Township 9. South in Range
 No. 40 East in Baker County Oregon.
 described as follows, Commencing at a
 point 180 feet West from the South
 West corner of Block No. 16 in J. M. Boyd's
 Addition to Baker City. Thence West
 150 feet. Thence North 250 feet. Thence
 East 150 feet. Thence South 250 feet
 to place of beginning, embracing 7 lots

Scale 100 feet to 1 inch
 May 4th 1888

