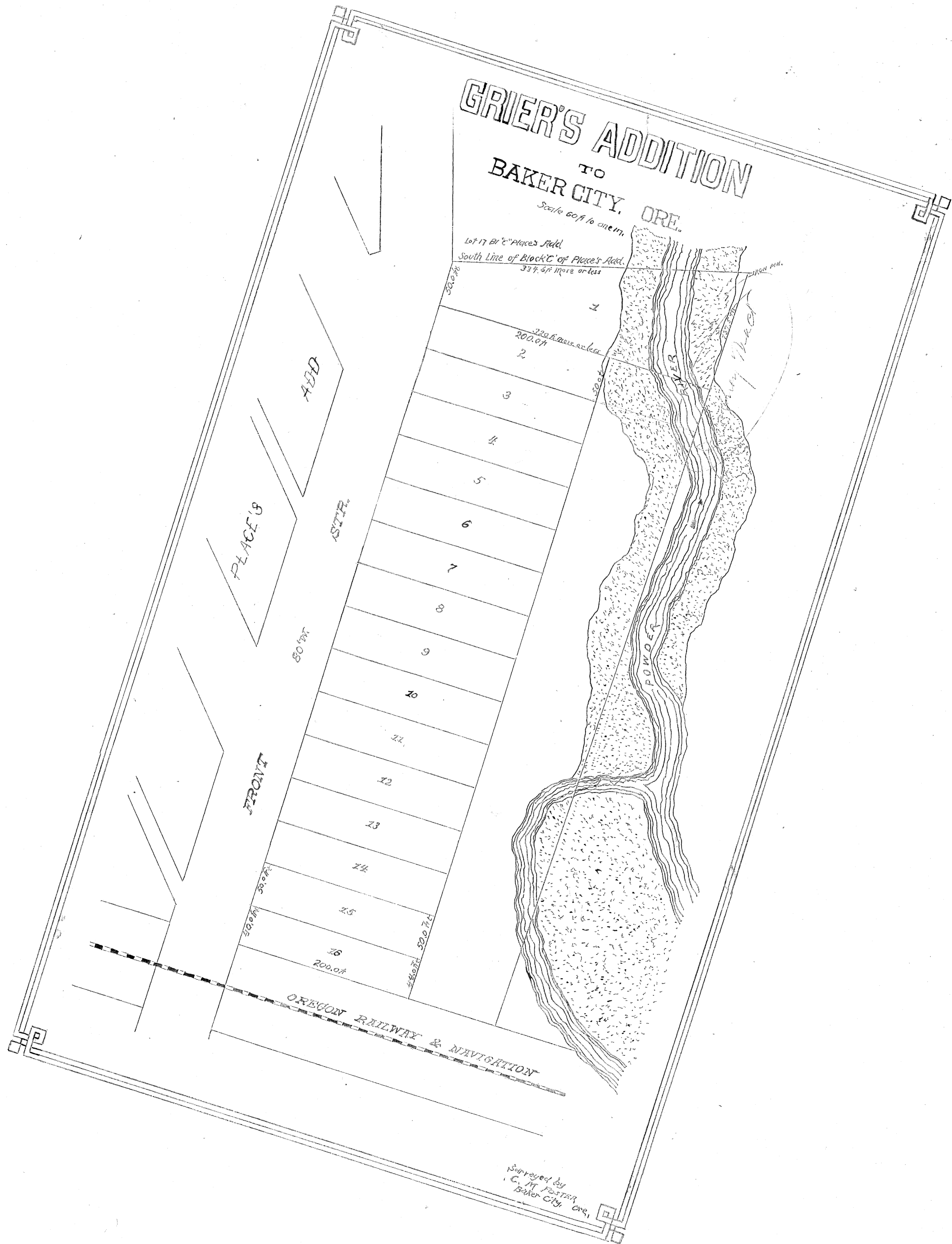


# GRIER'S ADDITION TO BAKER CITY, ORE.

Scale 60 ft to one in.

Lot 17 of "Places Add."  
South Line of Block "C" of "Places Add."  
33 7/8 ft more or less



*Filed for record September 18<sup>th</sup> A.D. 1897.  
at 8 o'clock A.M. J.M. Bond Recorder of Conveyances*

*Surveyed by  
C. M. POSTER  
Baker City, Ore.*