

REPLAT NO. SD2009-004

BEING A REPLAT OF A PORTION OF BLOCK 17 AND A PORTION OF PLUM STREET IN THE VACATED PORTION OF FAULL'S ADDITION TO BAKER CITY, SITUATED IN THE NW1/4NE1/4 SECTION 16, T.9S., R.40E., W.M., CITY OF BAKER CITY, BAKER COUNTY, OREGON SURVEY COMPLETED MAY 21, 2009

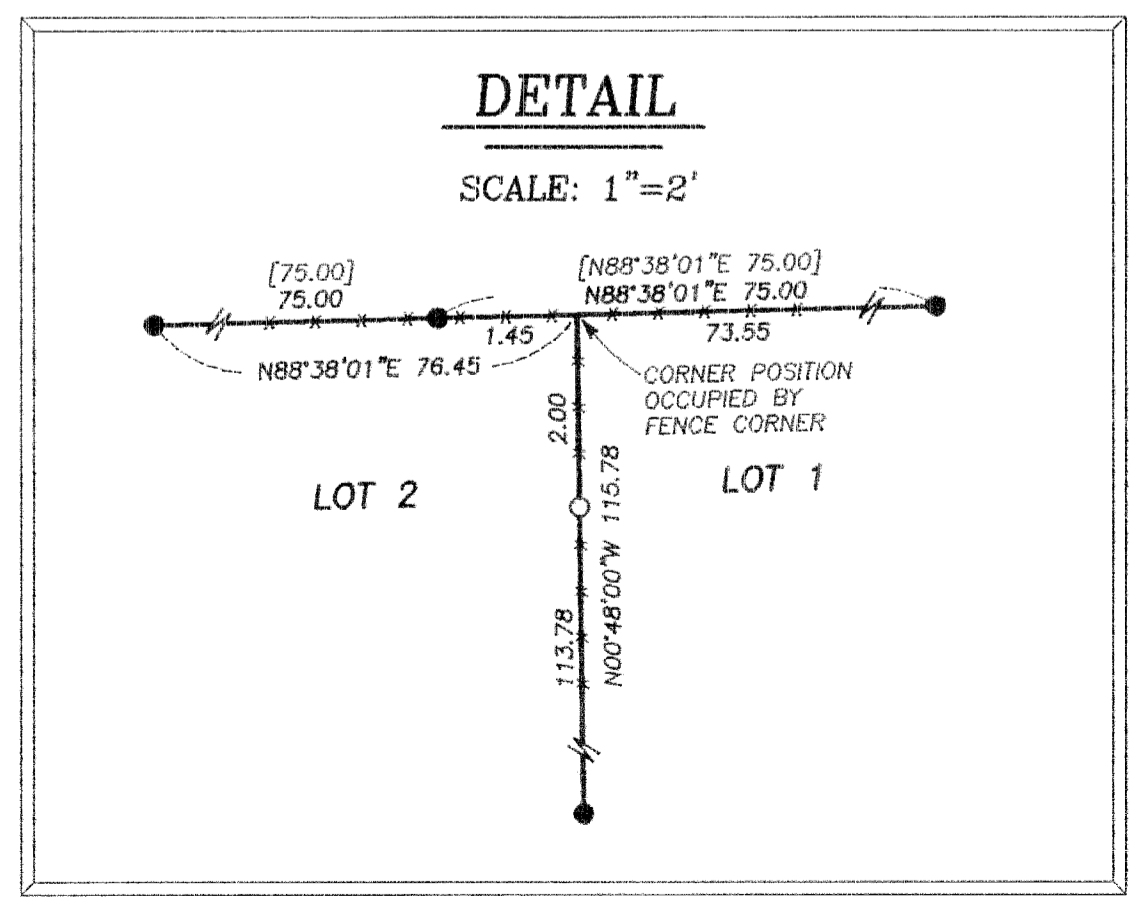
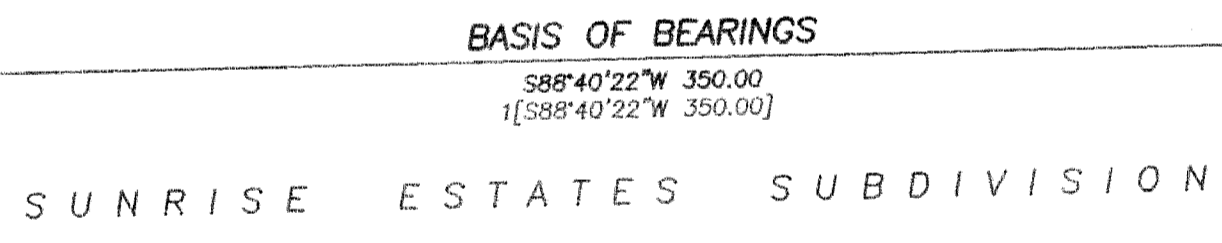
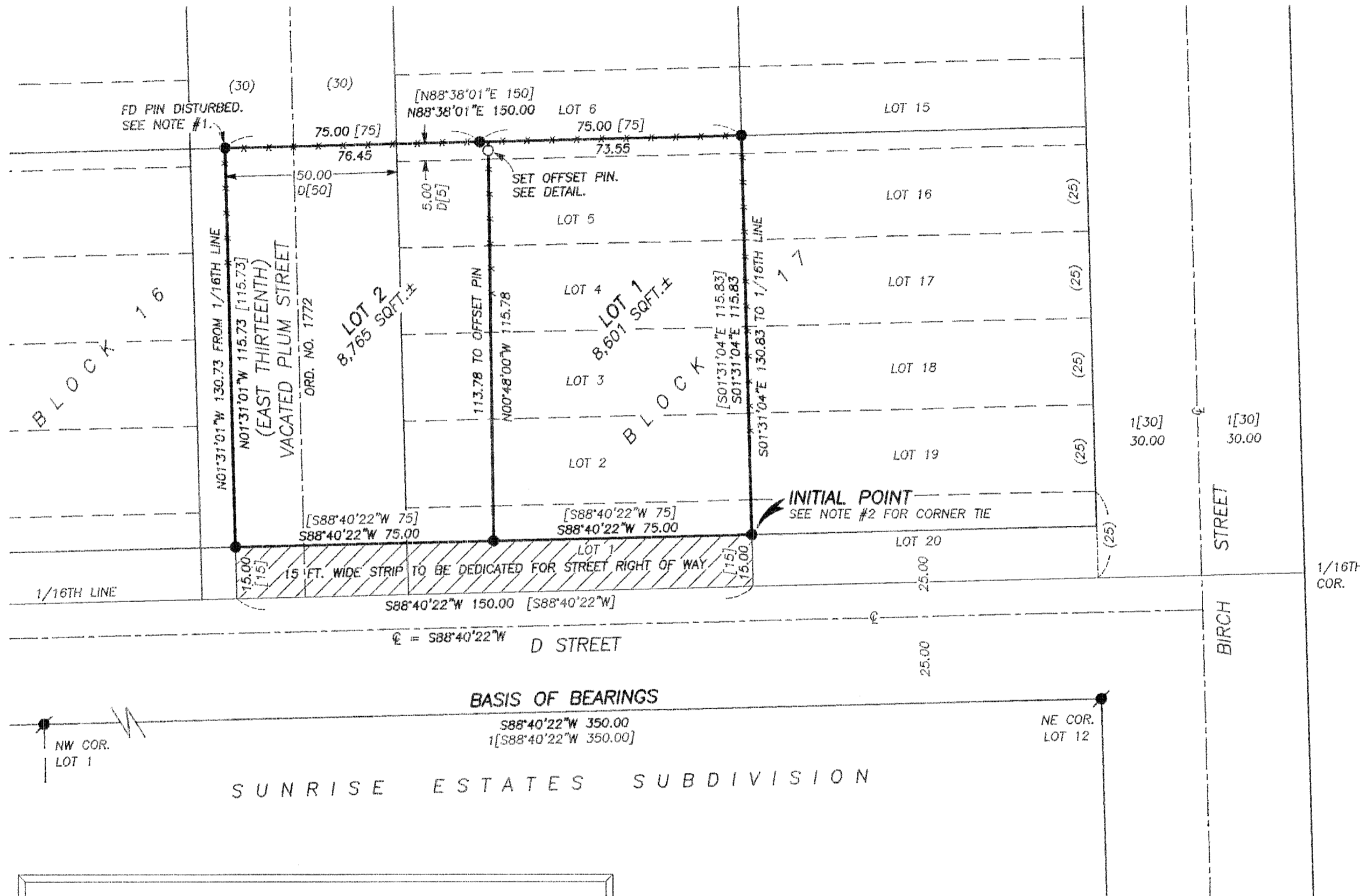


BASIS OF BEARINGS

PLAT OF SUNRISE ESTATES SUBDIVISION AS SHOWN

LEGEND

- FOUND 1/2" IRON PIN WITH ATTACHED YELLOW PLASTIC CAP MARKED "RPE 2808" FROM SURVEY NO. 9-40-104BC
- FOUND 5/8" IRON PIN WITH ATTACHED YELLOW PLASTIC CAP MARKED "HANLEY ENGR. PLS 1206" FROM SUNRISE ESTATES SUBDIVISION
- SET 5/8"x30" IRON PIN WITH ATTACHED YELLOW PLASTIC CAP MARKED "BENCHMARK SURVEYING"
- D[] DEED RECORD BEARING AND DISTANCE
- () RECORD BEARING AND DISTANCE FROM THE PLAT FAULL'S ADDITION TO BAKER CITY
- [] RECORD BEARING AND DISTANCE FROM SURVEY NO. 9-40-104BC
- 1[] RECORD BEARING AND DISTANCE FROM THE PLAT OF SUNRISE ESTATES SUBDIVISION
- X—X FENCE LINE

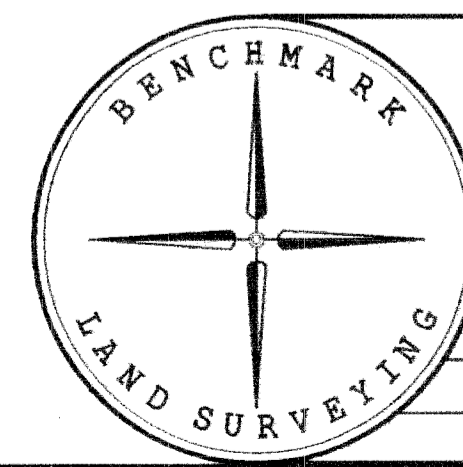


REGISTERED PROFESSIONAL LAND SURVEYOR

Jason L. Hatfield

OREGON
NOVEMBER 30, 2007
JASON L. HATFIELD
#69454
EXPIRES: 6/30/2011

- NOTES:
1. FOUND PIN DISTURBED. PIN IS 0.23 FT. SOUTH AND 0.45 FT. EAST OF THE CORNER POSITION, WHICH IS OCCUPIED BY A FENCE CORNER.
 2. THE INITIAL POINT IS 1278.76 FT. SOUTH AND 1171.93 FT. EAST OF THE N1/4 COR. SEC. 16, T.9S., R.40E., W.M.



BENCHMARK LAND SURVEYING 217 N. CANYON BLVD. JOHN DAY, OREGON 2101 MAIN STREET, STE 223 BAKER CITY, OREGON 541-575-1251 ~ 800-699-0516		
BEING A REPLAT OF A PORTION OF BLOCK 17 AND A PORTION OF PLUM STREET IN THE VACATED PORTION OF FAULL'S ADDITION TO BAKER CITY, SITUATED IN THE NW1/4NE1/4 SECTION 16, T.9S., R.40E., W.M., CITY OF BAKER CITY, BAKER COUNTY, OREGON		
SURVEYED FOR	MIKE SULLIVAN	
SURVEYED BY	JLH & MCS	5/21/2009
Scale: 1" = 30'	Drawn by: JLH	SHEET 1 OF 2