

REPLAT NO. SD 2019-004

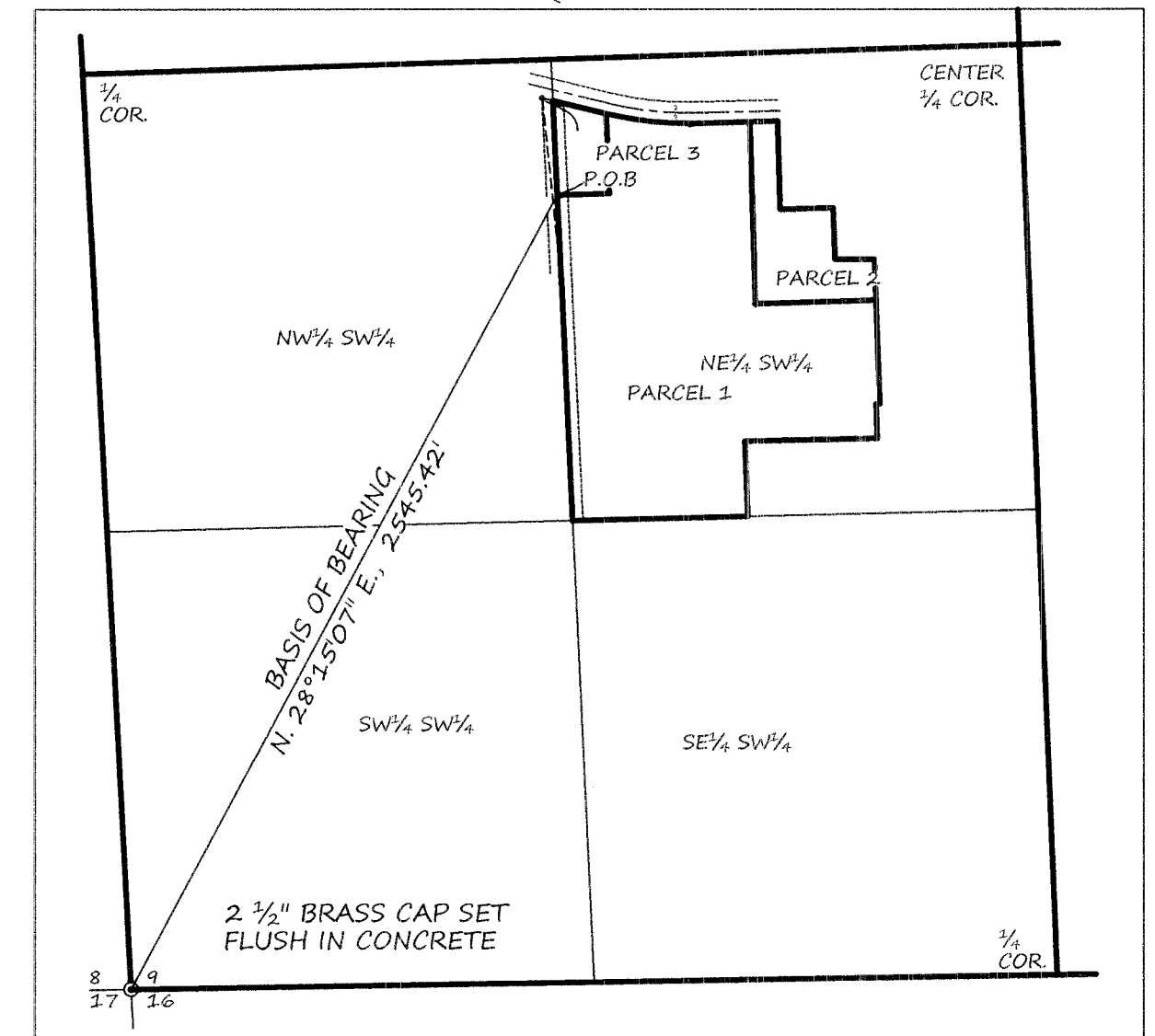
A REPLAT OF LOT 12, ELKHORN VISTA SUBDIVISION SD2000-004

LOCATED IN THE EAST 1/2 OF THE SOUTHWEST 1/4 OF SECTION 9, TOWNSHIP 9 SOUTH, RANGE 40 EAST, WILLAMETTE MERIDIAN, BAKER CITY, BAKER COUNTY, OREGON

MAY, 2019

HANLEY ENGINEERING, INC.

P.O. BOX 701, 2043 MAIN STREET, BAKER CITY, OREGON 97814 (541) 523-3803



LEGEND

- Set 5/8" x 30" rebar with plastic cap marked "HANLEY ENGR. PLS 1817"
- ⊙ Found monument as stated
- Found monument 5/8" rebar with Y.P.C. set Baker County Survey No. 9-40-782.
- [] Record data per Baker Co. Partition Plat 1994-015
- () Record data per BAKER Co. Subd. Plat SD 2000-004
- { } Record data per Baker Co. Partition Plat 2002-003
- (()) Record data per Baker Co. Survey No. 9-40-782

HANLEY ENGINEERING, INC.
2043 MAIN STREET
BAKER CITY, OREGON

REGISTERED PROFESSIONAL LAND SURVEYOR

THOMAS J. HANLEY
OREGON
JULY 13, 1979
THOMAS J. HANLEY
1817

Renews June 30, 2019

