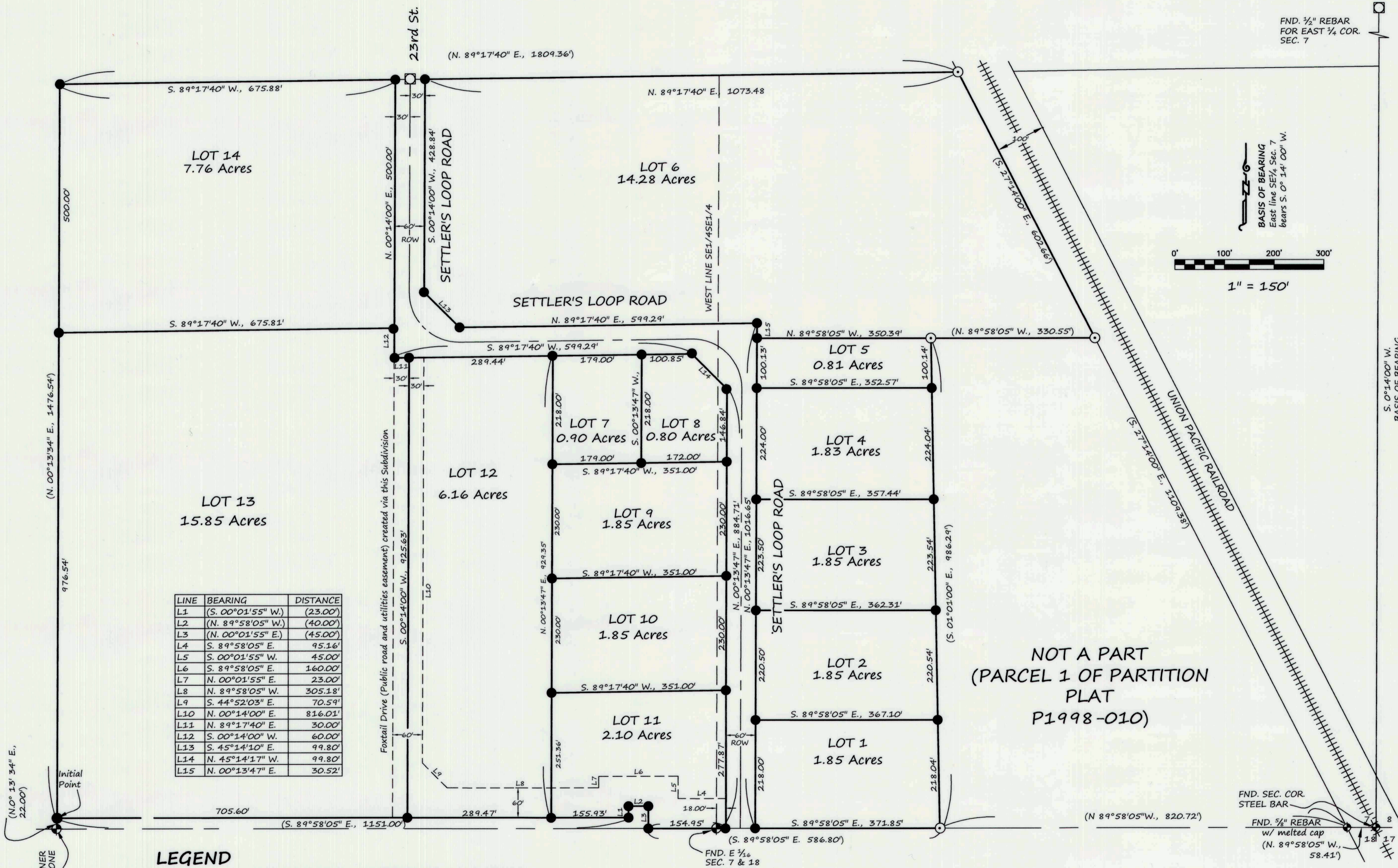


ELKHORN VIEW INDUSTRIAL PARK SUBDIVISION SD2016-01

A REPLAT OF PARCEL 2, PARTITION PLAT P1998-010
LOCATED IN THE SE 1/4 OF SECTION 7, TOWNSHIP 9 SOUTH, RANGE 40 EAST
OF THE WILLAMETTE MERIDIAN, BAKER CITY, BAKER COUNTY, OREGON
JANUARY, 2016



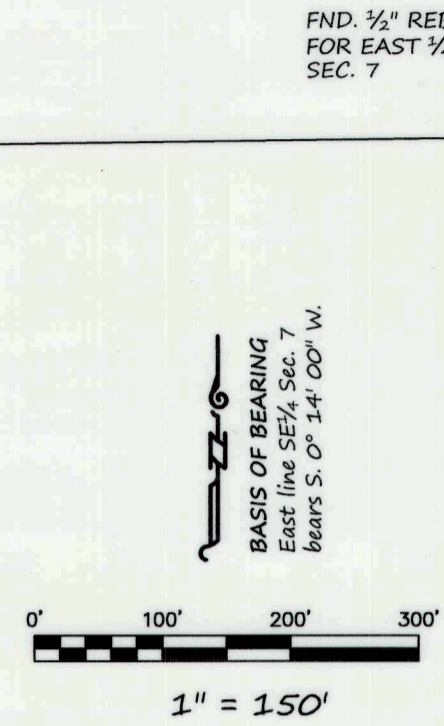
LINE	BEARING	DISTANCE
L1	(S. 00°01'55" W.)	(23.00')
L2	(N. 89°58'05" W.)	(40.00')
L3	(N. 00°01'55" E.)	(45.00')
L4	(S. 89°58'05" E.)	95.16'
L5	(S. 00°01'55" W.)	45.00'
L6	(S. 89°58'05" E.)	160.00'
L7	(N. 00°01'55" E.)	23.00'
L8	(N. 89°58'05" W.)	305.18'
L9	(S. 44°52'03" E.)	70.59'
L10	(N. 00°14'00" E.)	816.01'
L11	(N. 89°17'40" E.)	30.00'
L12	(S. 00°14'00" W.)	60.00'
L13	(S. 45°14'10" E.)	99.80'
L14	(N. 45°14'17" W.)	99.80'
L15	(N. 00°13'47" E.)	30.52'

LEGEND

- Set, 5/8" rebar with yellow plastic cap marked "HANLEY ENGR. PLS 1817"
- ⊙ Found, 5/8" rebar with plastic cap marked "HANLEY ENGR. PLS 1206"
- ⊕ Found, monument as noted
- ☐ Found, monument in box
- () Record data as per Partition Plat No. 1998-010

SURVEY FOR:
CITY OF BAKER CITY
Baker City Hall
1655 First Street
P.O. Box 650
Baker City, OR 97814
(541) 523-6541

SURVEY BY:
HANLEY ENGINEERING, INC.
TOM HANLEY, PLS 1817
P.O. BOX 701
BAKER CITY, OR 97814
(541)-523-3803



FND. SEC. COR. STEEL BAR
FND. 5/8" REBAR w/ melted cap (N. 89°58'05" W., 58.41')

REGISTERED PROFESSIONAL LAND SURVEYOR
Tom Hanley
OREGON
JULY 13, 1979
THOMAS J. HANLEY
1817