

**HANLEY ENGINEERING, INC.**

P.O. BOX 701, 2043 MAIN STREET, BAKER CITY, OREGON 97814 (541) 523-3803

**Deer Valley Estates SD2015 -001**  
**In the NE 1/4 of Sec. 29, T. 8 S., R. 39 E., W.M.**

(N. 89° 38' 59" E., 2710.41')

20 21  
29 28

FOUND 1/8" REBAR  
PER SUR. NO. 8-39-7.

NORTH 1/4 CORNER  
SECTION 29

**LEGEND**

- Set 5/8" rebar with plastic cap marked "HANLEY ENGR. PLS 1817".
  - Found, 5/8" rebar with plastic cap marked "HANLEY ENGR. PLS 1817", set by Ba. Co. Part. Plat No. P2002-005.
  - ◇ Found, existing rebar from P2003-009, driven down.
  - Found, rebar from P2003-009
  - ( ) Record Data Per Part. Plat No. P2002-005.
  - { } Record Data Per Ba. Co. Deed No. 77 13 081.
  - Found, rebar from Sur. No. 8-39-44.
- All other shown survey data from Part. Plat No. P2003-009

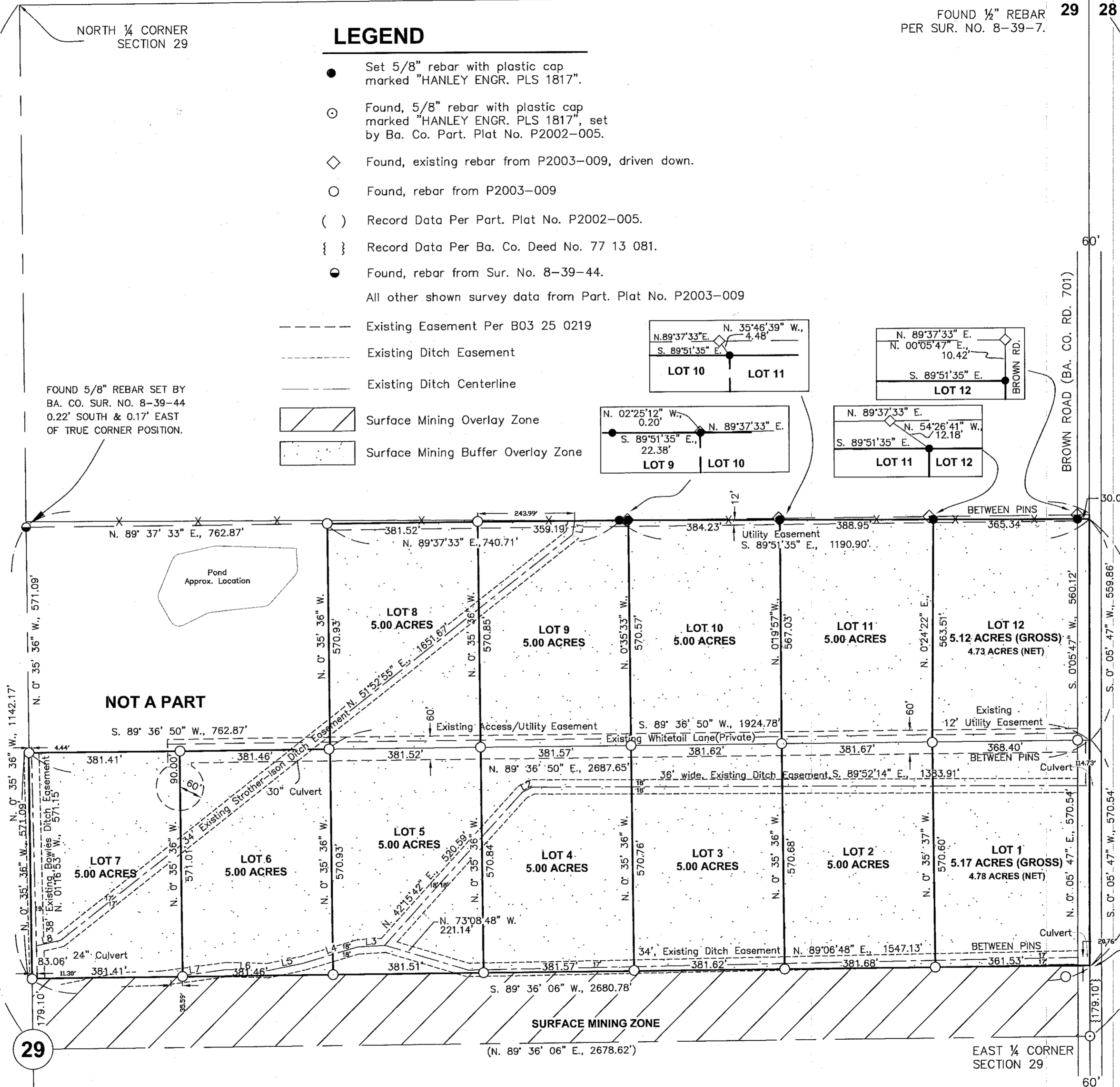
- - - Existing Easement Per B03 25 0219
- - - Existing Ditch Easement
- - - Existing Ditch Centerline
- ▨ Surface Mining Overlay Zone
- ▨ Surface Mining Buffer Overlay Zone

BASIS OF BEARING  
BA. CO. PART. PLAT NO. P2002-005.  
EAST LINE OF THE NE 1/4 BEARS  
N. 0° 05' 47" E.

SCALE: 1" = 200'

FOUND 5/8" REBAR SET BY  
BA. CO. SUR. NO. 8-39-44  
0.22' SOUTH & 0.17' EAST  
OF TRUE CORNER POSITION.

(N. 0° 35' 36" W., 2642.55')



(N. 0° 05' 47" E., 2640.36')  
BASIS OF BEARING

**NOTE**

Sewage disposal shall be provided by a DEQ approved sanitary sewage disposal system for each parcel.

LINE	BEARING	DISTANCE
L1	S 08°53'29" W	35.26'
L2	N 62°55'57" E	28.43'
L3	S 86°56'10" W	68.29'
L4	S 73°43'26" W	141.69'
L5	S 78°32'00" W	91.90'
L6	N 88°10'17" W	106.48'
L7	S 82°48'16" W	149.84'
L8	S 77°35'28" W	63.68'

HANLEY ENGINEERING, INC.  
2043 MAIN STREET,  
BAKER CITY, OREGON

P.O.B.

REGISTERED  
PROFESSIONAL  
LAND SURVEYOR

*Thomas J. Hanley*  
OREGON  
JULY 13, 1979  
THOMAS J. HANLEY  
1817

Renews June 30, 2015