

SW 1/4 OF NE 1/4 OF

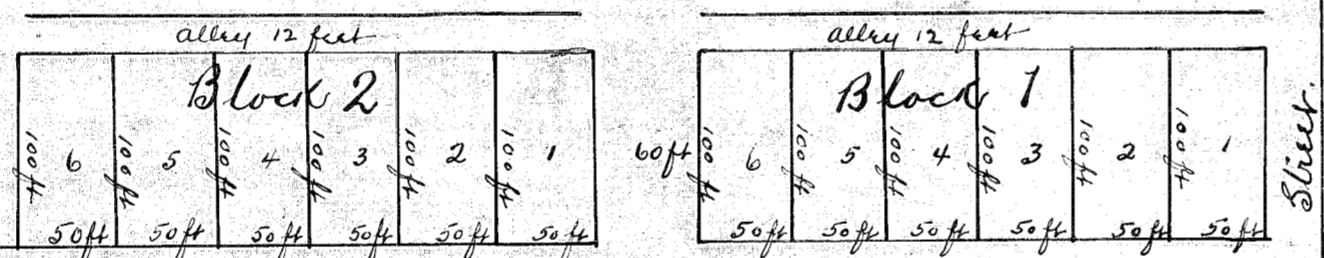
SEC 23 TR 9 SR 45 E



See Ord Record 57 Page 230.

Luffys North Addition to the Town of Richland

Beginning at a point 30 ft north and 30 ft west of the S E cor of the SW 1/4 of the NE 1/4 of Sec 23 Tr 9 SR 45 E. Thence west 660 ft. north 100" East 660" South 100" to the place of beginning. Lots no. 1-2-3-4-5 in B. Block no 1 & 2 are 50 ft front by 100 ft deep. The Streets are 60 ft wide. Surveyed July 18th 1900. W. B. Blakeslee Surveyor.



Main Street

RICHLAND