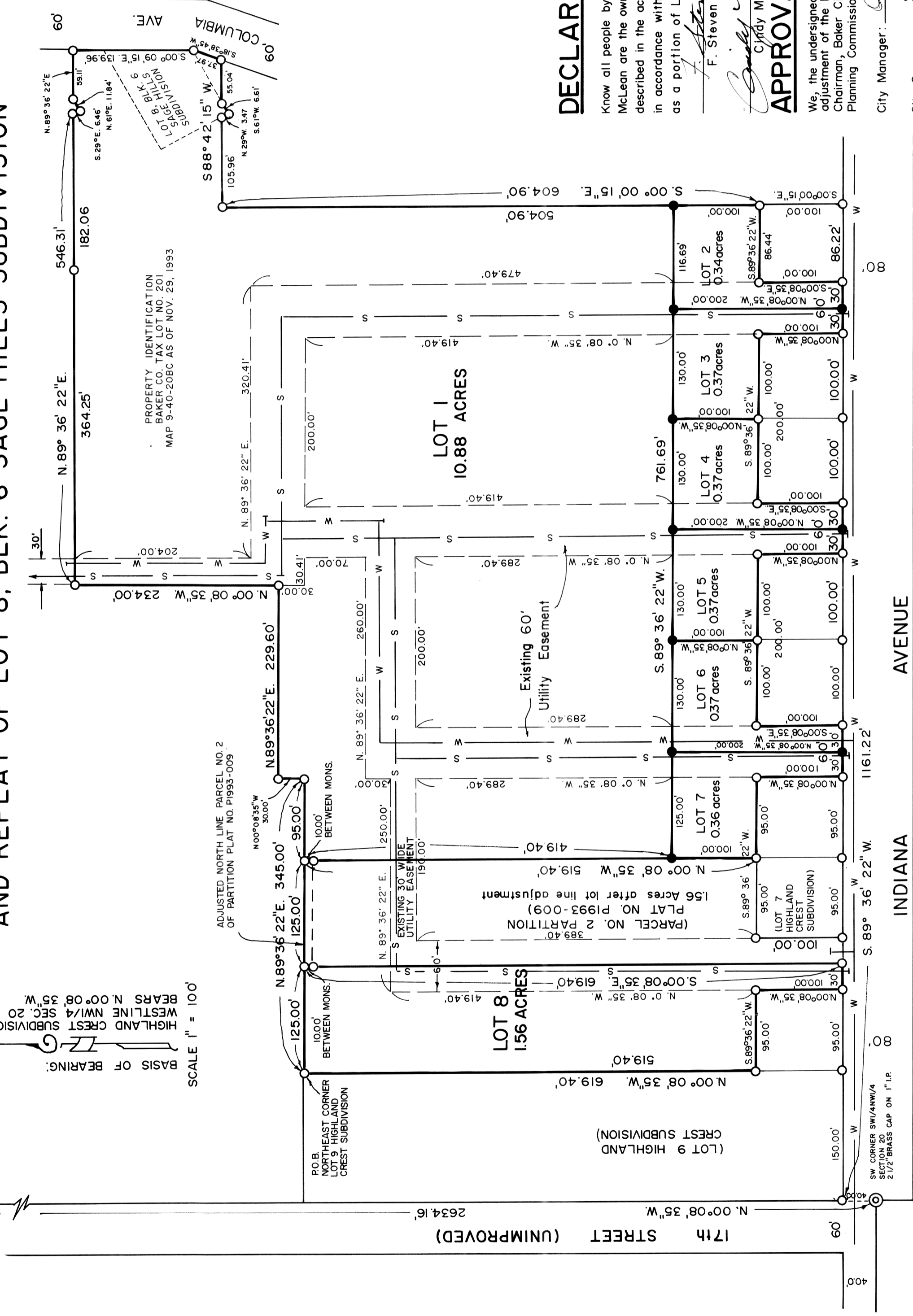


HIGHLAND CREST II SUBDIVISION AND REPLAT OF LOT 8, BLK. 6 SAGE HILLS SUBDIVISION

18
17
19
20

SCALE 1" = 100'
BASIS OF BEARING:
HIGHLAND CREST SUBDIVISION PLAT
WESTLINE N.00°08'35"W
BEARS N.00°08'35"W
HIGHLAND CREST SUBDIVISION PLAT
WESTLINE N.W.1/4 SEC. 20
N.89°36'22"E



SURVEYOR'S CERTIFICATE

I, James D. Hanley certify that I have correctly surveyed and subdivided the land represented on the annexed HIGHLAND CREST II SUBDIVISION plat in the Southwest quarter of the Northwest quarter Section 20, Township 9 South, Range 40 East, W.M. in accordance with O.R.S. Chapter 92. The exterior boundaries of which are described as follows: Beginning at the Northeast Corner Lot 9 HIGHLAND CREST SUBDIVISION;

thence along said subdivision boundary line the following courses: N.89°36'22"E, 345.00 feet; N.00°08'35"W, 30.00 feet;

thence N.89°36'22"E, 229.60 feet;

thence N.00°08'35"W, 234.00 feet;

thence N.89°36'22"E, 546.31 feet;

thence S.29°E, 6.46 feet;

thence N.61°E, 11.84 feet;

thence N.89°36'22"E, 59.11 feet;

thence S.00°09'15"E, 139.96 feet;

thence S.18°38'45"W, 37.97 feet;

thence S.88°42'15"W, 55.04 feet;

thence S.61°W, 6.61 feet;

thence N.29°W, 3.47 feet;

thence S.88°42'15"W, 105.96 feet;

thence along Lot 10 of said subdivision the following courses: S.00°00'15"E, 604.90 feet; S.89°36'22"W, 86.44 feet; S.00°08'35"E, 100.00 feet; S.89°36'22"W, 60.00 feet; N.00°08'35"W, 100.00 feet; S.89°36'22"W, 200.00 feet; S.00°08'35"E, 100.00 feet; S.89°36'22"W, 200.00 feet; S.89°36'22"W, 60.00 feet; N.00°08'35"W, 100.00 feet; S.89°36'22"W, 200.00 feet; S.89°36'22"W, 95.00 feet; to NE Cor. Lot 7 HIGHLAND CREST SUBDIVISION;

thence N.00°08'35"W, 519.40 feet;

thence S.89°36'22"W, 125.00 feet;

thence S.00°08'35"E, 619.40 feet;

thence S.89°36'22"W, 30.00 feet;

thence N.00°08'35"W, 100.00 feet;

thence S.89°36'22"W, 95.00 feet;

thence N.00°08'35"W, 519.40 feet to the Point of Beginning.

REGISTERED
PROFESSIONAL
LAND SURVEYOR
JAMES D. HANLEY
1976

RENEWAL DATE JAN. 1, 1994

DECLARATION

Know all people by these presents that Jeffrey D. Petry, Carol J. Petry, F. Steven McLean and Cindy McLean are the owners/subdividers of the land represented on the annexed map and more particularly described in the accompanying Surveyor's Certificate and have caused the same to be subdivided as shown, in accordance with O.R.S. Chapter 92, and hereby replat Lot 8, Blk. 6 Sage Hills Subdivision as a portion of Lot 1, Highland Crest II Subdivision.

APPROVALS

We, the undersigned officers do hereby approve the plat of HIGHLAND CREST II SUBDIVISION and the adjustment of the North line Parcel No. 2 Partition Plat P1993-009 as shown.

Chairman, Baker City Planning Commission: *Walter A. Hines*; Date *Dec. 1, 1993*, 1993.

City Manager: *Arthur F. Peery*; Date *DEC. 1*, 1993.

City Surveyor: *Clay Van Patten* PLS 2162; Date *Nov. 30*, 1993.

All ad valorem and special assessments due pursuant to law have been assessed and collected.

County Assessor by: _____; Date _____, 1993.

County Treasurer by: *Lynne Taylor*; Date *DEC. 1*, 1993.

I hereby certify the annexed HIGHLAND CREST II SUBDIVISION plat was received for record on the 2nd day of December, 1993, and recorded in Baker County records and is hereby approved. *8:30 AM*

County Clerk by: *Julia Wood*

ACKNOWLEDGEMENT

On December 1, 1993 before me did personally appear the within named Jeffrey D. and Carol J. Petry and F. Steven and Cindy McLean who acknowledged to me that they executed the same freely and voluntarily.

Julia Wood
NOTARY PUBLIC
MY COMMISSION EXPIRES 4/19/97

OFFICIAL SEAL
JULIA WOOD
NOTARY PUBLIC - OREGON
COMMISSION NO. 002169
MY COMMISSION EXPIRES JUNE 18, 1997

HANLEY ENGINEERING
2043 MAIN STREET
BAKER CITY, OREGON

LEGEND

- Found 5/8" rebar of record Baker Co. Survey 9-40-370 Partition Plats P1993-009, 010 and/or HIGHLAND CREST SUBDIVISION PLAT
- Set 5/8" 30" rebar with plastic cap marked "HANLEY ENGR. PLS. 1206"
- Found city monument in steel case
 - W — Waterline location
 - S — Sewerline location
 - — Existing Utility Easement

REFERENCES: HIGHLAND CREST SUBDIVISION Plat, Partition Plats 1993-009, 010 and Baker County Survey No. 9-40-370.