

MAP of CORNUCOPIA

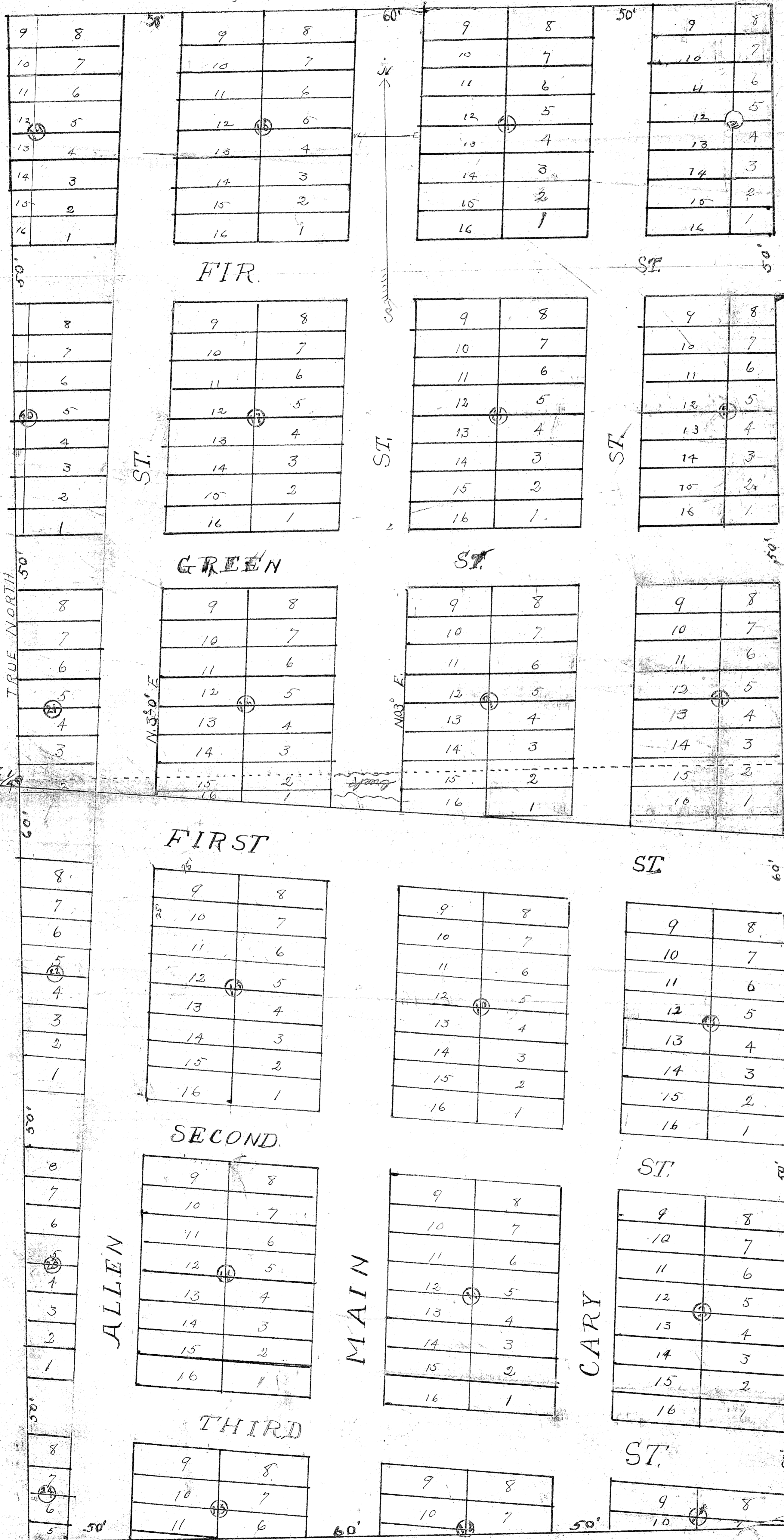
DRAWN FROM OLD MAP SCALE 300' = 1" TO A SCALE 1" = 50'

BY DWG. NELSON County ENGINEER Jan. 12 - 1942.

T. 6 S. R. 45 E.

SW 1/4 SW 1/4 of SE 1/4 Sec 27.

N.W. 1/4 NW 1/4 of NE 1/4 Sec 34.



50' →

TRUE NORTH

SEC. 27, 1/4
Sec 34

1" = 50'

ALLEN

MAIN

CARY

FIRST

SECOND

THIRD

FIR

GREEN

ST.

ST.

ST.

ST.

ST.

ST.

ST.

N. 50° E

N. 60° E

JK

COMM

50'

50'

60'

50'

50'

50'

60'

50'