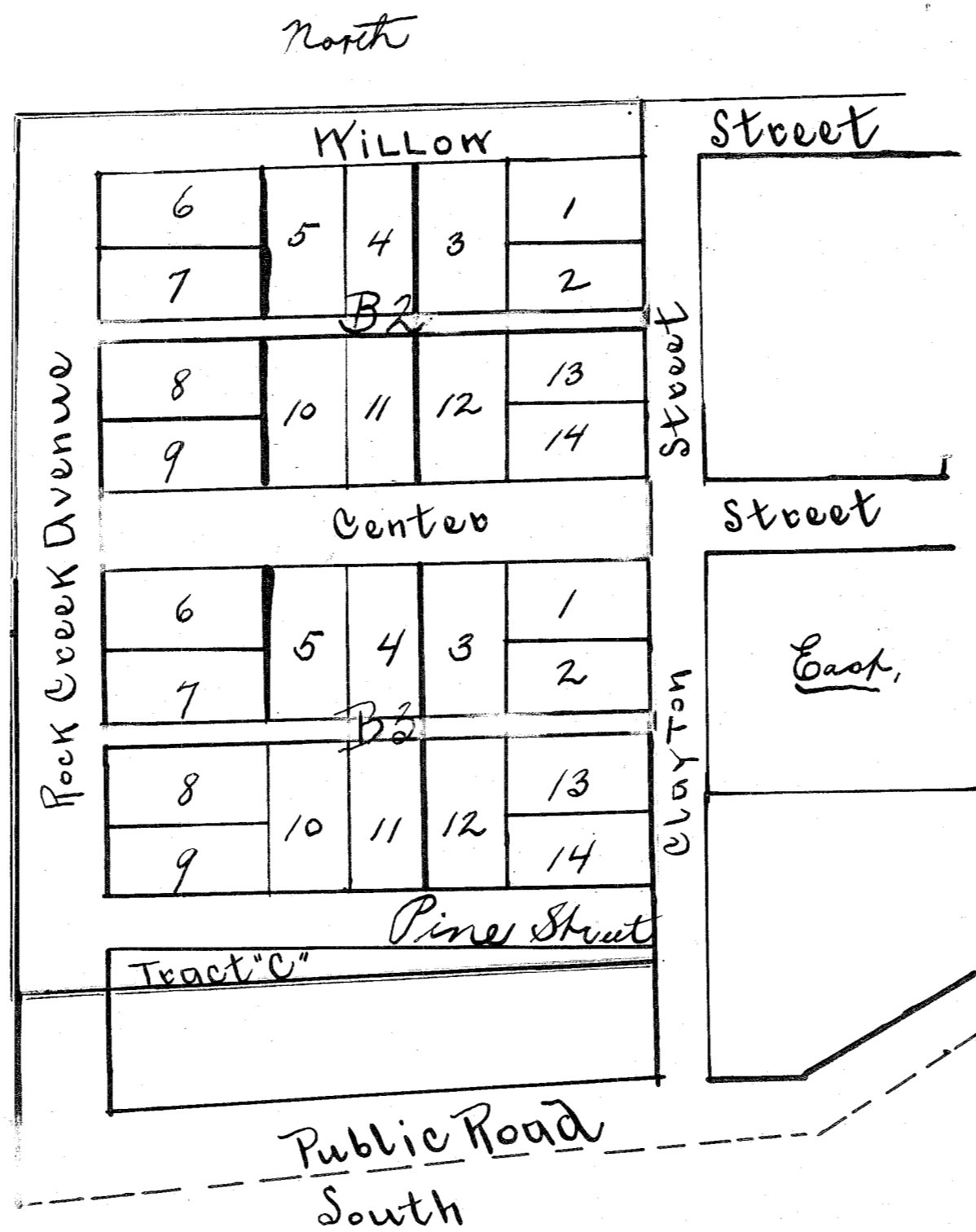


Recorded in Volume 60 of Deeds,
on Page 380.

Filed for record June 21st 1905 at 3 PM.

R. W. Henry, Recorder.

West



map of that part of Cole's Addition
to Rock Creek, vacated by annexed order
of County Court of the State of Oregon,
for Baker County. All within
boundaries of red ink lines is vacated
by said order.

Approved, June 10th 1905.

W. W. Travillion, County Judge.
J. C. Brooks " Comm.
A. K. Fisher " "