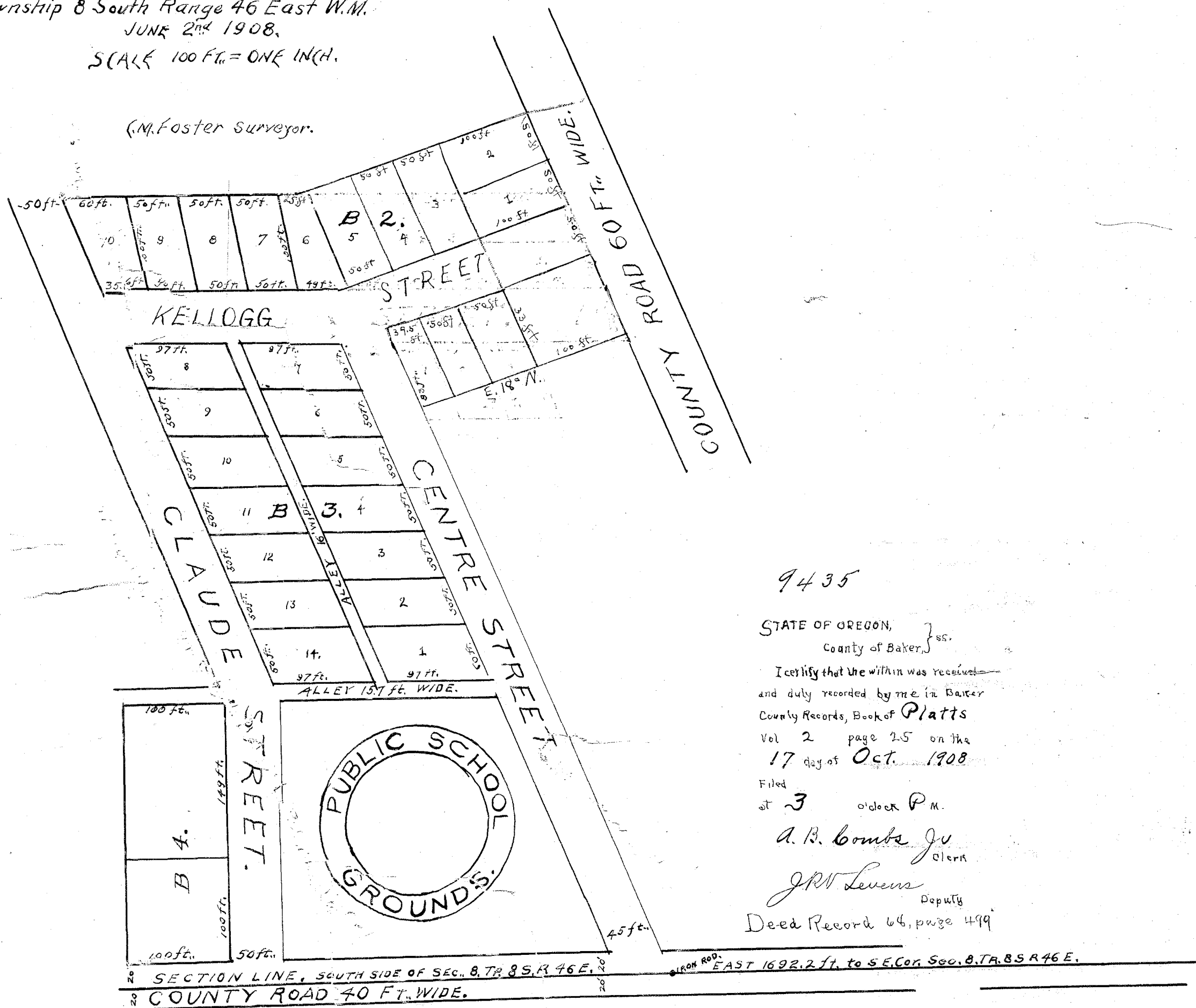


**PLAN**  
**OF**  
**CLAUDE OFFICERS**  
**FIRST ADDITION**  
 TO  
**HALFWAY**  
 IN BAKER COUNTY OREGON  
 Situated on the S.W. 1/4 of S.E. 1/4 of Section 8 in  
 Township 8 South Range 46 East W.M.  
 JUNE 2<sup>nd</sup> 1908.  
 SCALE 100 FT. = ONE INCH.



9435  
 STATE OF OREGON, }  
 County of Baker, } ss.  
 I certify that the within was received  
 and duly recorded by me in Baker  
 County Records, Book of *Platts*  
 Vol. 2 page 25 on the  
 17 day of Oct. 1908.  
 Filed  
 at 3 o'clock P.M.  
*A. B. Brants Jr*  
 Clerk  
*J. R. Lewis*  
 Deputy  
 Deed Record 64, page 499

For Dedication See Deed Record Vol. 68 Page 499

174  
 169  
 170  
 171