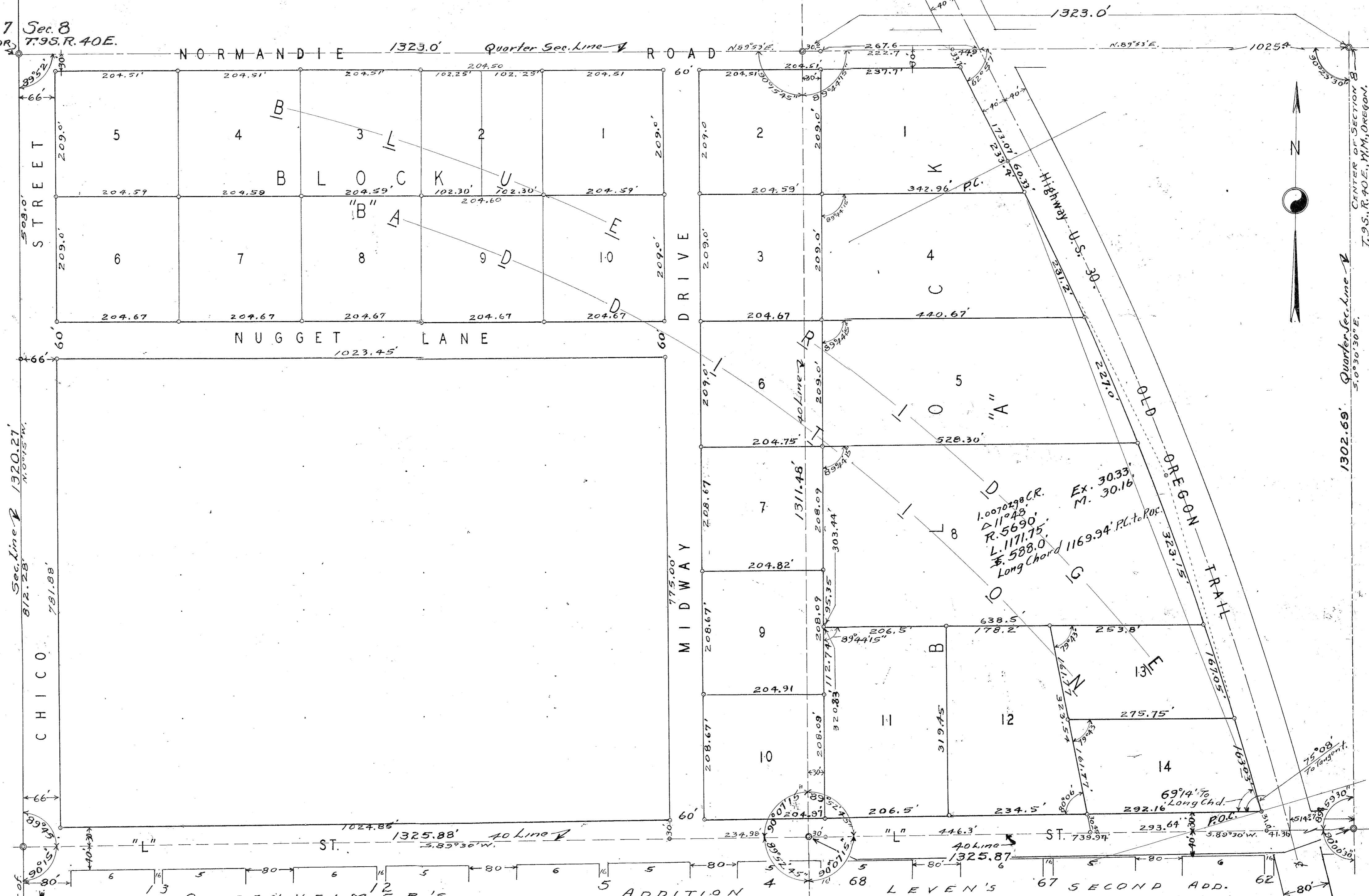


Sec. 7
1/4 Cor.
Sec. 8
T. 9S. R. 40E.



50°54' to Corner of
1320.27' to Corner of
Secs. 7, 8, 17, 18,
T. 9S., R. 40E., M.M., OREGON.

I, Philo H. Anderson, of Baker, Oregon, hereby certify that this map was made from the notes of an actual survey made by me between Nov. 25, 1946, and Dec. 15, 1946, and that it correctly represents the location of points thereon, to the best of my knowledge and belief.
 Philo H. Anderson
 Registered Professional Engineer
 1257, Oregon.
 Date of registration: - March 9, 1923.
 Note: Bearings shown hereon are referred to meridian used by Union Pacific R.R. Survey - 1945-46.



FILED
 1946
 12 23

BLUE RIDGE ADDITION
 CITY OF BAKER
 BAKER COUNTY OREGON
 Scale: 1" = 100'. R.F. 1/1200 SURVEYED BY PHIL H. ANDERSON.
 December, 1946.