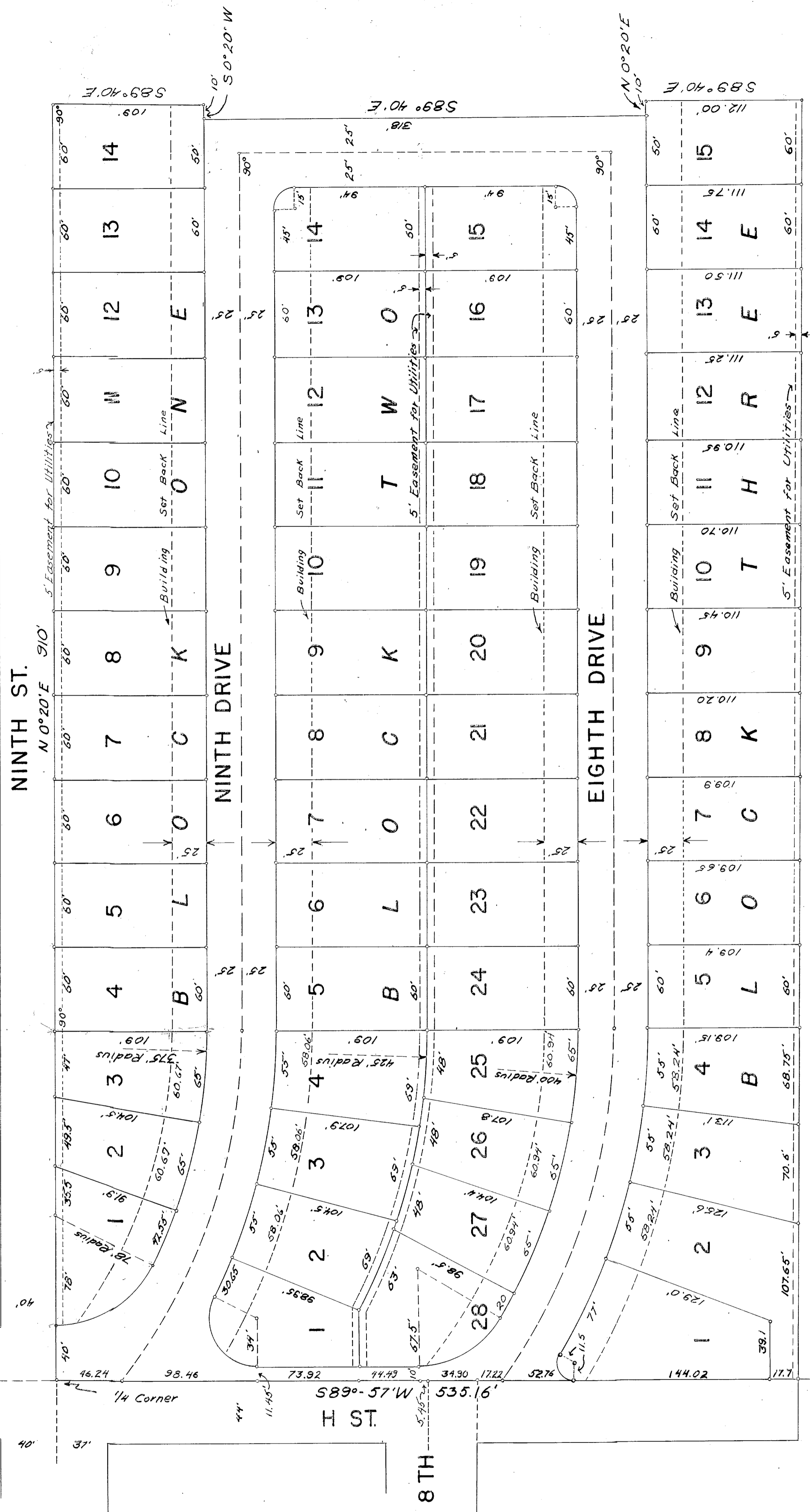


Note: Iron pipe or rods shown thus °.  
 Lot lines and street center lines, except  
 in curved areas, are parallel and perpendicular  
 to east line of Ninth Street.



**BLUE MOUNTAIN PARK SUBDIVISION NO. 1**

CITY OF BAKER, OREGON

LOCATED IN S.W. 1/4 OF SE. 1/4 OF SEC. 8 TWP. 9S, R. 40E, W.M.

SCALE: 1" = 50 FT.

Section 8  
 Section 17