

BEAR GULCH SUBDIVISION

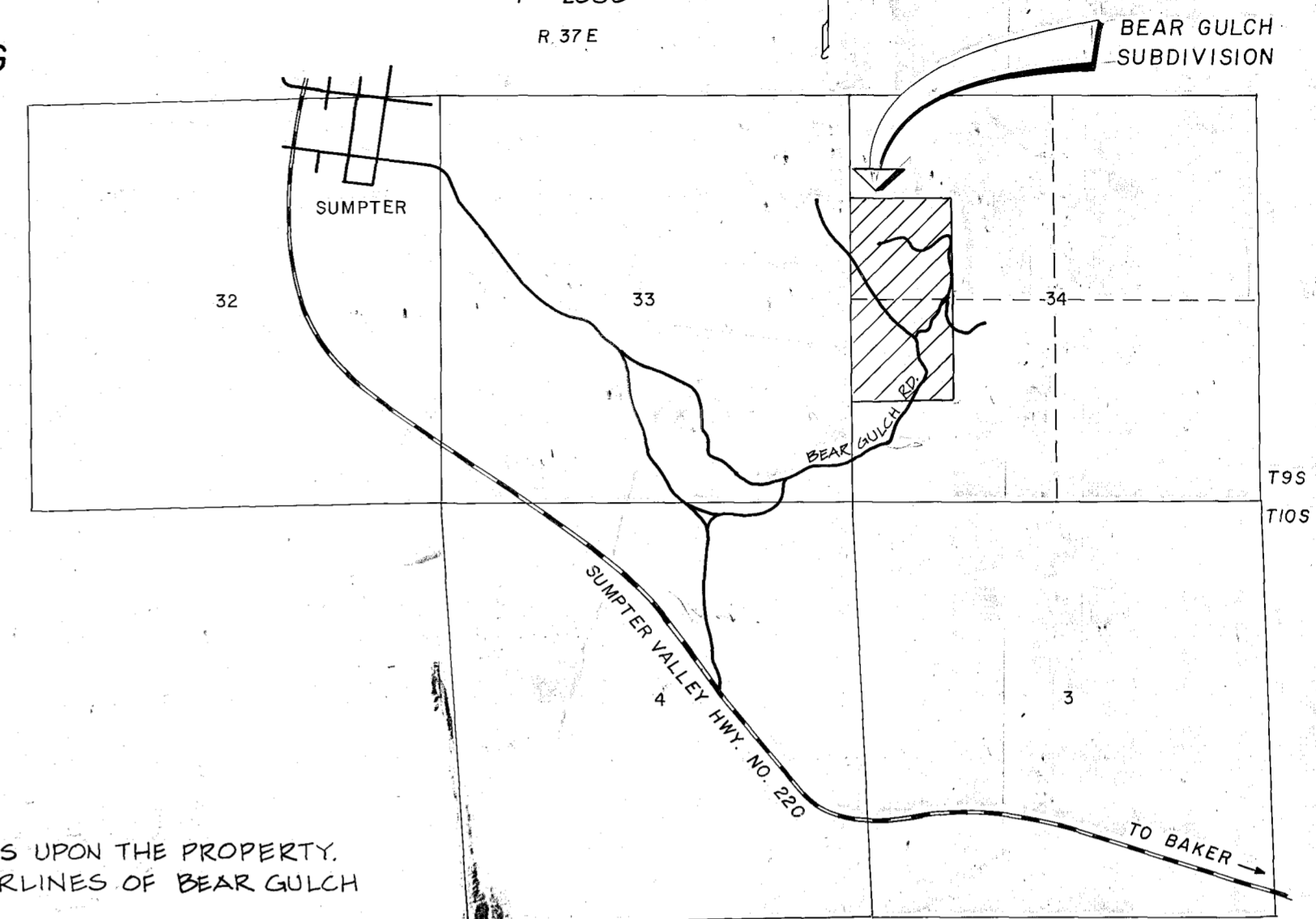
SURVEYED BY HANLEY ENGINEERING

Scale 1" = 100'

Meridian based on O.S.H.D. drawing no. 88-16-14.

VICINITY MAP

1" = 2000'
R 37 E



LEGEND

- ⊙ FOUND MONUMENT OF RECORD
- ⊙ INITIAL POINT - 2" x 36" PIPE
- 5/8" x 30" REBAR W/ PLASTIC CAP
- ① CURVE NUMBER

NOTE: ALL ROADS SHOWN ARE EASEMENTS UPON THE PROPERTY. PROPERTY LINES EXTEND TO THE CENTERLINES OF BEAR GULCH ROAD AND BEAR GULCH LOOP ROAD.

ROAD CENTERLINE CURVE & TANGENT DATA

BEAR GULCH ROAD

- ① 6° C.L.
Δ = 8° 11' 10"
T = 68.33
L = 136.44
P.C. = 0+00.00
ENTER PROPERTY = 1+13.95
P.T. = 1+36.44
N 29° 30' 29" E., 142.56'
- ② 18° C.R.
Δ = 21° 03' 07"
T = 59.14
L = 116.96
P.C. = 2+79.00
P.T. = 3+95.96
N 50° 33' 36" E., 41.17'
- ③ 76° C.L.
Δ = 77° 15' 35"
T = 60.25
L = 101.66
P.C. = 4+37.13
P.T. = 5+38.79
N 26° 41' 59" W., 280.69'
- ④ 52° C.R.
Δ = 39° 34' 29"
T = 39.64
L = 76.11
P.C. = 8+19.48
P.T. = 8+95.59
N 12° 52' 30" E., 1.21'
- ⑤ 46° C.L.
Δ = 27° 55' 17"
T = 43.94
L = 84.20
P.C. = 8+96.80
P.T. = 9+81.00
N 15° 02' 47" W., 2140'

- ⑥ 48° C.L.
Δ = 40° 25' 03"
T = 43.94
L = 84.20
P.C. = 10+20.40
P.T. = 10+86.60
N 55° 27' 49" W., 199.64'
- ⑦ 12° C.R.
Δ = 18° 00' 48"
T = 75.68
L = 150.11
P.C. = 12+86.24
P.T. = 14+36.35
N 37° 27' 02" W., 161.13'
- ⑧ Δ ONLY (RIGHT)
Δ = 5° 36' 29"
STA. 15+97.48'
N 31° 50' 33" W 223.66'
- ⑨ Δ ONLY (RIGHT)
Δ = 5° 30' 01"
STA. 18+21.14'
N 26° 20' 32" W, 174.40'
- ⑩ 22° C.L.
Δ = 24° 02' 50"
T = 55.47
L = 109.31
P.C. = 19+95.84
P.T. = 21+04.85
N 50° 23' 22" W., 15.32'
- ⑪ 40° C.R.
Δ = 32° 47' 18"
T = 42.14
L = 81.97
P.C. = 21+20.17
P.T. = 22+02.14
N 17° 36' 04" W., 67.18'

- ⑫ 46° C.L.
Δ = 37° 55' 36"
T = 42.80
L = 82.45
P.C. = 22+69.32
P.T. = 23+51.77
N 55° 31' 40" W., 1.01'
- ⑬ 24° C.R.
Δ = 17° 50' 01"
T = 37.46
L = 74.31
P.C. = 23+52.78
EXIT PROPERTY = 24+03.65
P.T. = 24+27.09
N 37° 27' 02" W., 161.13'
- ⑭ 90° C.R.
Δ = 89° 40' 09"
T = 63.30
L = 99.63
P.C. = 0+25.13
P.T. = 1+24.76
N 74° 37' 22" E., 20.81'
- ⑮ 26° C.L.
Δ = 52° 19' 54"
T = 108.27
L = 201.28
P.C. = 1+45.63
P.T. = 3+46.91
N 22° 17' 28" E., 272.81'
- ⑯ 124° C.R.
Δ = 158° 17' 28"
T = 249.01
L = 127.65
P.C. = 6+19.72
P.T. = 7+47.37
50° 34' 56" W., 208.57'

- ⑰ 180° C.L.
Δ = 51° 22' 43"
T = 34.45
L = 64.22
P.C. = 9+55.94
P.T. = 10+20.16
S 50° 47' 47" E., 64.68'
EXIT PROPERTY = 10+84.84
- ⑱ 26° C.L.
Δ = 26° 10' 56"
T = 51.25
L = 100.70
P.C. = 2+88.50
P.T. = 3+89.20
N 22° 22' 48" W., 82.26'
- ⑲ 36° C.R.
Δ = 35° 06' 16"
T = 50.34
L = 97.51
P.C. = 4+71.46
P.T. = 5+68.97
N 12° 43' 28" E., 204.31'
- ⑳ 20° 42' 45" C.L.
Δ = 25° 43' 09"
T = 63.15
L = 124.17
P.C. = 7+73.28
P.C.C. = 8+97.45
N 12° 55' 41" W., 0.00'
- ㉑ 160° C.L.
Δ = 125° 59' 46"
T = 70.27
L = 78.75
P.C.C. = 8+97.45
P.T. = 9+76.20

- ㉒ 541° 00' 33" W, 181.17'
40° C.R.
Δ = 40° 51' 39"
T = 53.36
L = 102.15
P.C. = 11+57.37
P.T. = 12+59.52
S 81° 52' 12" W., 96.93'
- ㉓ 60° C.R.
Δ = 65° 51' 16"
T = 61.84
L = 109.76
P.C. = 13+56.45
P.T. = 14+66.21
N 32° 16' 32" W., 44.44'
- ㉔ 36° C.L.
Δ = 75° 18' 42"
T = 118.44
L = 203.64
P.C. = 15+10.65
P.T. = 17+14.29
S 74° 24' 46" W., 274.55'
END ROAD = 19+88.84

