

3872

Books  
63- 625  
18 May 1907  
10 a  
A. B. Combs Jr.  
J. W. Stevens

# TOWN SITE OF BALLARD

BAKER COUNTY, OREGON.

SCALE 100 FEET TO 1 INCH.

Section 11, Township 6 S. Range 48 E. W.M.G.

State of Oregon }  
County of Baker } ss

J. C. M. Foster, being duly sworn, say that I have correctly surveyed and marked with proper monuments, the exterior boundaries and block corners of the townsite of Ballard, represented on this plat.

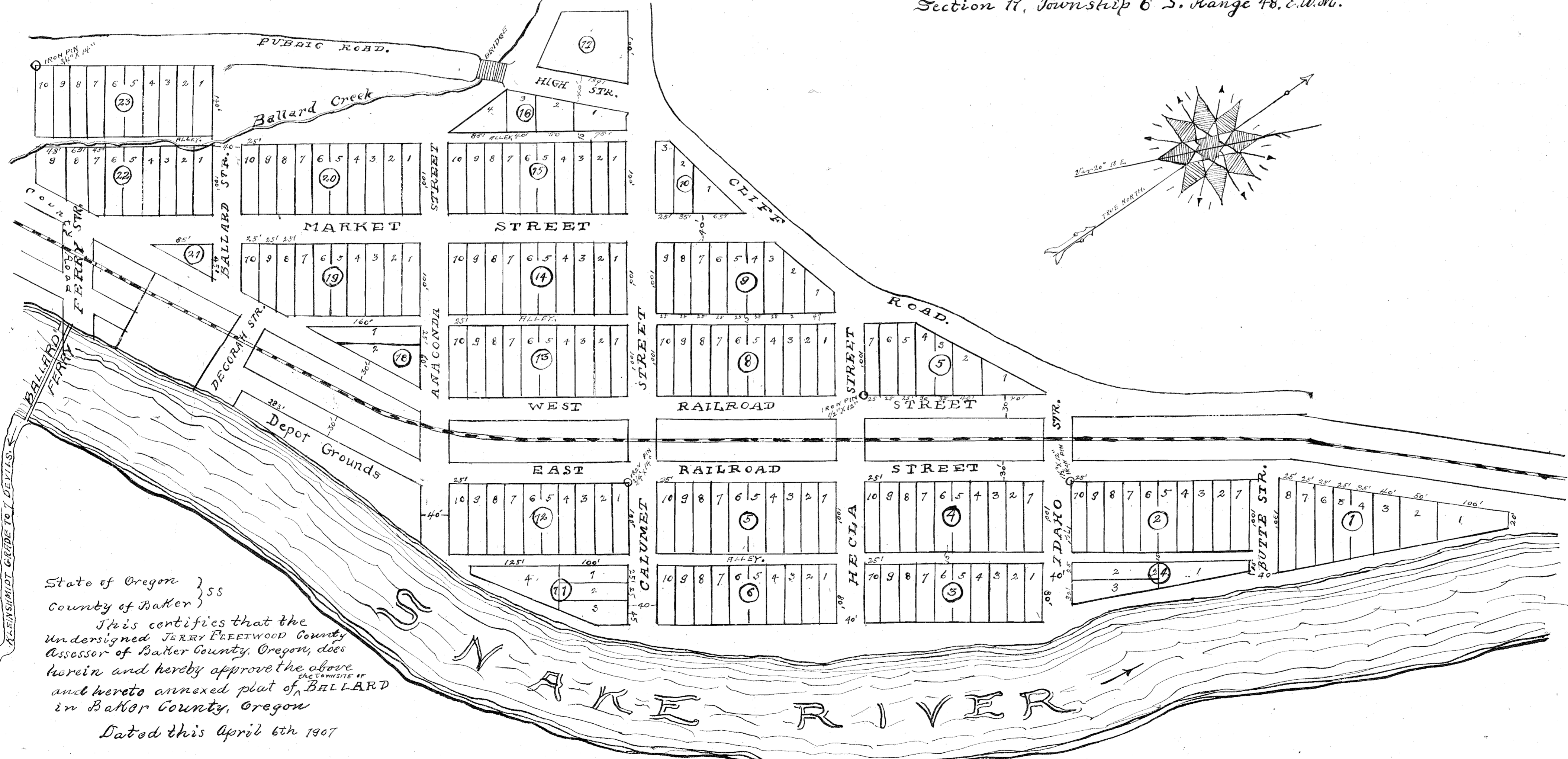
That I have planted an iron rod, 3/4" x 1 1/2" at the S.W. Corner of Block No. 23 in said townsite, from which the U.S. meander corner on section line between Sections 11 and 14 in Township 6 S. Range 48 E. bears south 55° 42' W. 323 feet distant. I have planted an Iron Pin 1/2" x 1 1/2" at S.E. Corner of Block No. 5; also one 3/4" x 1 1/2" at the N.W. Corner of Block No. 7; also a strap iron 1 1/2" x 1 1/2" at S.W. Corner of Block No. 20.

This townsite is located on Lots 2, 3 and 4, of Section 11 in Township 6 S. Range 48 E. in Baker County, Oregon.

J. C. M. Foster  
Surveyor

Subscribed and sworn to before me this 6th day of April 1907.

Fred A. McElis  
Notary Public for Oregon.



State of Oregon }  
County of Baker } ss

This certifies that the undersigned JERRY FLEETWOOD County Assessor of Baker County, Oregon, does herein and hereby approve the above and hereto annexed plat of BALLARD in Baker County, Oregon

Dated this April 6th 1907

Jerry Fleetwood  
County Assessor