

We, the undersigned officers in and for Baker County, Oregon do hereby approve the plat of BAKER INDUSTRY AND RESOURCES CORPORATION.

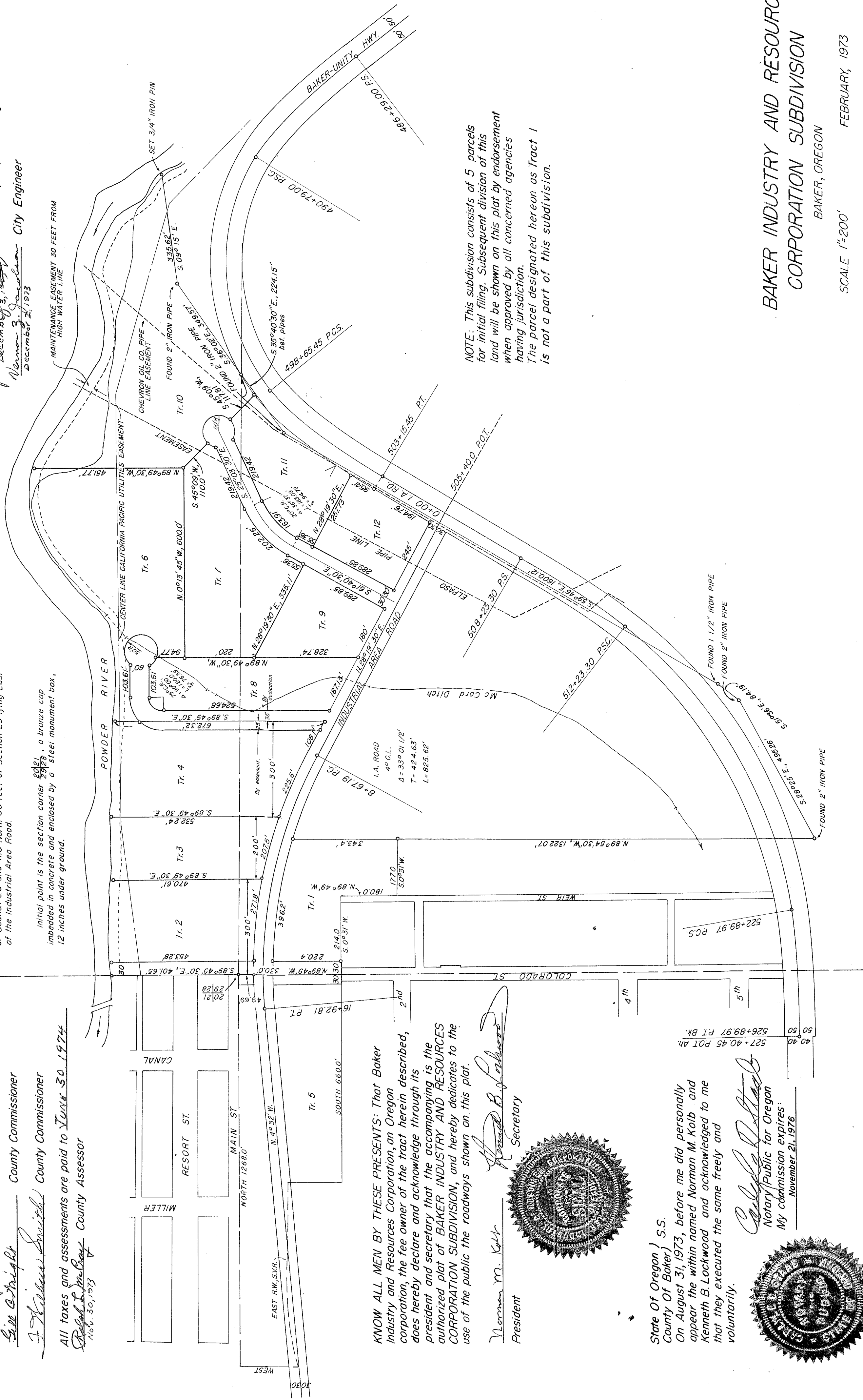
David Lee County Judge
See Wright County Commissioner
F. Helms Smith County Commissioner
 All taxes and assessments are paid to JUNE 30, 1974
Robert L. McCreary County Assessor
 Nov. 30, 1973

CITY OF BAKER APPROVALS:
 We, the undersigned members of the City of Baker Planning Commission and the City of Baker Engineering Department hereby approve the plat of the BAKER INDUSTRY AND RESOURCES CORPORATION.

John P. Stollberg Chairman, City Planning Commission
 December 3, 1973
Norman M. Kolb City Engineer
 December 2, 1973

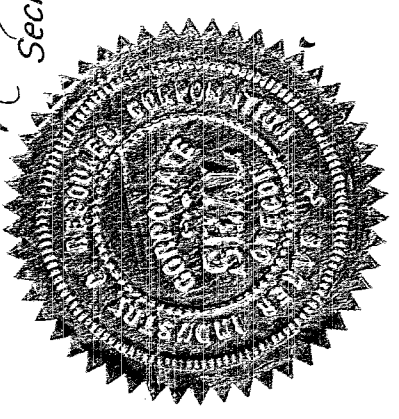
Colorado Street is extended by including the North 30 feet of Section 28 lying West of Powder River, the South 30 feet of Section 20 and the North 30 feet of Section 29 lying East of the Industrial Area Road.

Initial point is the section corner 28/29, a bronze cap imbedded in concrete and enclosed by a steel monument box, 12 inches under ground.

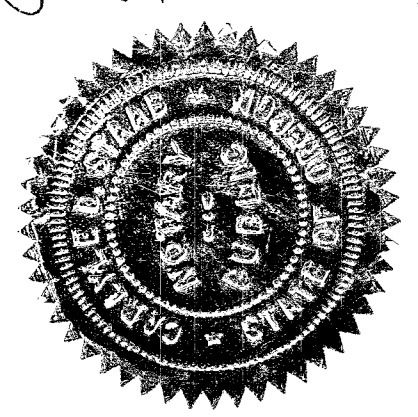


KNOW ALL MEN BY THESE PRESENTS: That Baker Industry and Resources Corporation, an Oregon corporation, the fee owner of the tract herein described, does hereby declare and acknowledge through its president and secretary that the accompanying is the authorized plat of BAKER INDUSTRY AND RESOURCES CORPORATION SUBDIVISION, and hereby dedicates to the use of the public the roadways shown on this plat.

Norman M. Kolb President
Harold B. Lockwood Secretary



State Of Oregon) S.S.
 County Of Baker)
 On August 31, 1973, before me did personally appear the within named Norman M. Kolb and Kenneth B. Lockwood and acknowledged to me that they executed the same freely and voluntarily.



NOTE: This subdivision consists of 5 parcels for initial filing. Subsequent division of this land will be shown on this plat by endorsement when approved by all concerned agencies having jurisdiction. The parcel designated hereon as Tract 1 is not a part of this subdivision.

BAKER INDUSTRY AND RESOURCES CORPORATION SUBDIVISION

BAKER, OREGON

SCALE 1"=200'

FEBRUARY, 1973