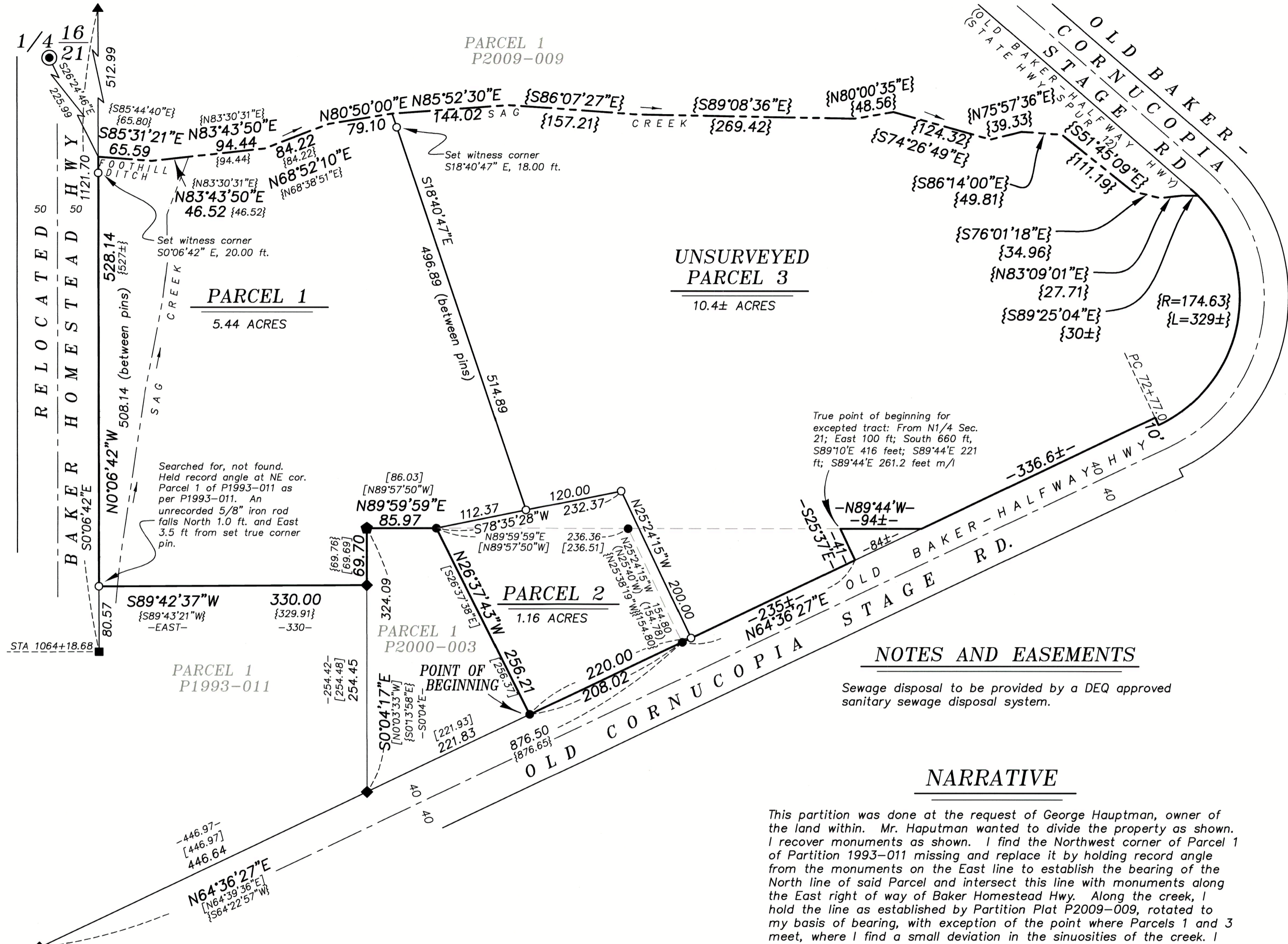


PARTITION PLAT NUMBER P2022-001

Situated in the Northeast quarter of Section 21, Township 8 South, Range 46 East of the Willamette Meridian



BASIS OF BEARING

True geodetic North at the quarter corner common to Section 16 and 21, Township 8 South, Range 46 East of the Willamette Meridian, as determined by GPS observation

SCALE: 1" = 100'

LEGEND

- Found 2" iron pipe, accepted as quarter corner
- Found 3/4" iron pin, accepted as being set by ODOT strip map 8B-10-5
- ▲ Found 5/8" iron pin, set by Survey Number 8-46-04
- Found 5/8" iron pin with plastic cap marked HANLEY ENGR PLS 1206, set by Survey Number 8-46-54
- ◆ Found 5/8" iron pin with plastic cap marked HANLEY ENGR PLS 1206, set by Partition Plat P1993-011
- ◆ Found 5/8" iron pin with plastic cap marked PLS 699, set by Partition Plat P2000-003
- Set 5/8"x30" iron pin with plastic cap marked BGB SURVEY MARKER
- Centerline of road
- - - Centerline of creek
- () Record measurement as per Survey Number 8-46-54
- - - Record measurement as per Partition Plat P1993-011
- [] Record measurement as per Partition Plat P2000-003
- { } Record measurement as per Partition Plat P2009-009

NOTES AND EASEMENTS

Sewage disposal to be provided by a DEQ approved sanitary sewage disposal system.

NARRATIVE

This partition was done at the request of George Hauptman, owner of the land within. Mr. Haputman wanted to divide the property as shown. I recover monuments as shown. I find the Northwest corner of Parcel 1 of Partition 1993-011 missing and replace it by holding record angle from the monuments on the East line to establish the bearing of the North line of said Parcel and intersect this line with monuments along the East right of way of Baker Homestead Hwy. Along the creek, I hold the line as established by Partition Plat P2009-009, rotated to my basis of bearing, with exception of the point where Parcels 1 and 3 meet, where I find a small deviation in the sinuosities of the creek. I show surveyed courses on Parcel 1 only. Parcel 3 of this partition is UNSURVEYED and I show record courses for the centerline of the creek as per Partition P2009-009.

I find no unusual conditions with this partition.

REGISTERED
PROFESSIONAL
LAND SURVEYOR

OREGON
JUNE 2, 2010
JEFFREY S. HSU
83571

Renewal Date: June 30, 2023

REFERENCE MATERIAL

- Survey Number 8-46-04
- Survey Number 8-46-53
- Survey Number 8-46-54
- Partition Plat Number P1993-011
- Partition Plat Number P2000-003
- Partition Plat Number P2009-009
- ODOT strip map 5B-30-19
- ODOT strip map 8B-10-5
- DEED REFERENCES
- Lot Book Report 488162AM, dated October 6, 2021, prepared by AmeriTitle
- Lot Book Report 501067AM, dated October 6, 2021, prepared by AmeriTitle