

REPLAT NUMBER P2021-003

A replat of Lots 1 through 10, Block 5, and attached vacated streets, Ottenheimer Addition to the City of Baker City Situated in the Southwest quarter of the Southwest quarter of Section 8, Township 9 South, Range 40 East of the Willamette Meridian, Baker County, Oregon

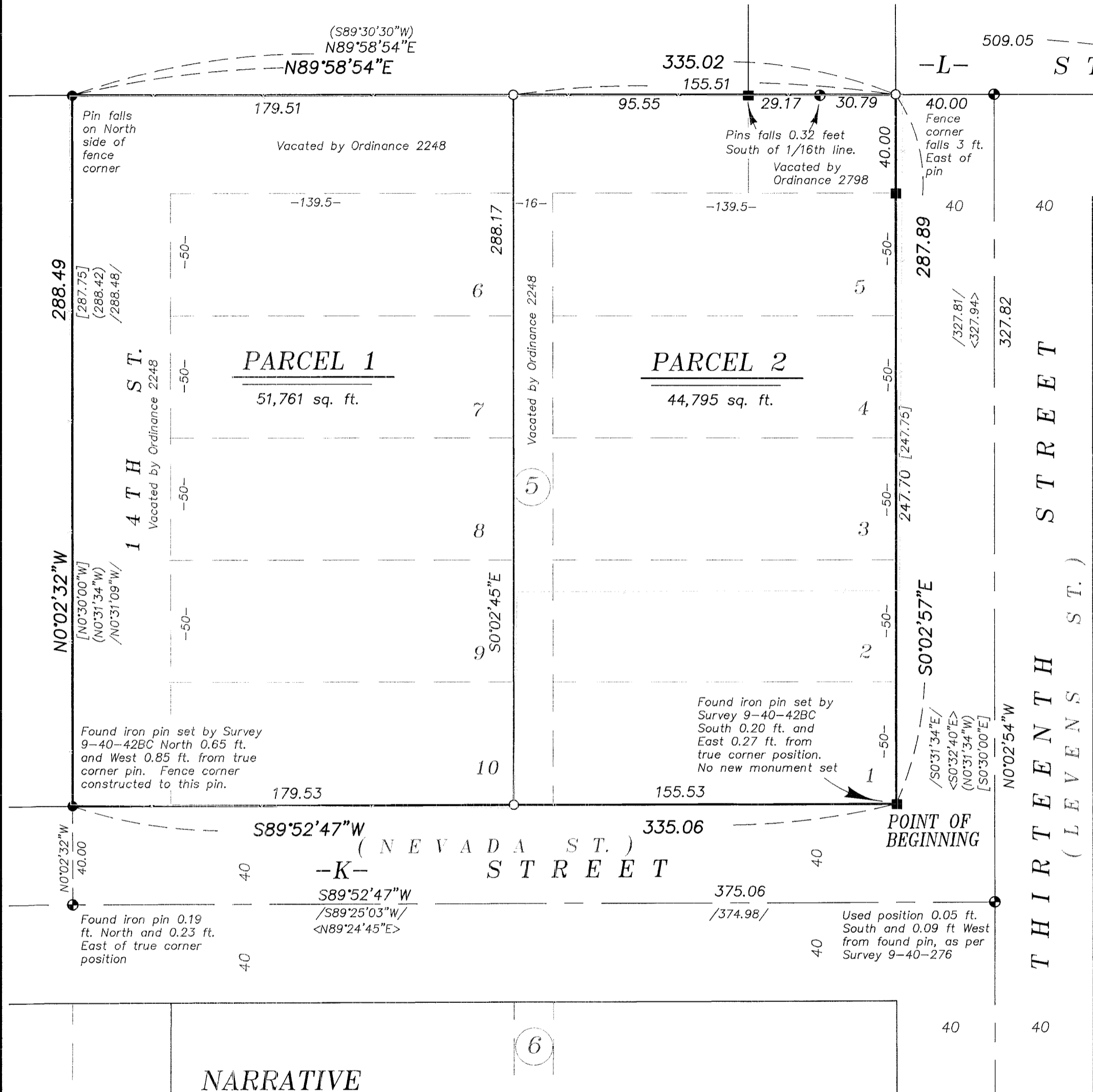
BASIS OF BEARING

True geodetic North at the corner common to Sections 8, 9, 16 and 17, Township 9 South, Range 40 East of the Willamette Meridian, as determined by GPS observation

SCALE: 1"=40'

LEGEND

- REFERENCE MATERIAL**
- Survey Number 9-40-42BC
 - Survey Number 9-40-240
 - Survey Number 9-40-189
 - Survey Number 9-40-276
 - Survey Number 9-40-500
 - Survey AD 17 11
 - Plat of Ottenheimer Addition
- DEED REFERENCES**
- Book 146, Page 380 (Ordinance 2248)
 - Deed 79 42 030
 - Deed 79 43 009 (Ordinance 2798)
- Title Report File No. 427657AM dated January 14, 2021, prepared by Amerititle LLC
- NOTES AND EASEMENTS**
- Easements for utilities over and across the premises formerly included within the boundaries of L Street, Fourteenth Street, and the alley, now vacated, if any such exist. No visible evidence of utilities evident at time of survey.
- Found 1" iron pipe (unless otherwise specified) in monument box
 - Found 3/4" iron pin (unless otherwise specified) in monument box
 - Found 5/8" iron pin set by Survey 9-40-42BC
 - Found 5/8" iron pin with plastic cap marked HANLEY ENGR, set by Survey Number 9-40-276
 - Set 5/8" x 30" iron pin with plastic cap marked BGB SURVEY MARKER
 - Centerline
 - - - Fenceline
 - [] Record measurement as per Survey Number 9-40-42BC
 - < > Record measurement as per Survey Number 9-40-240
 - () Record measurement as per Survey Number 9-40-276
 - / / Record measurement as per Survey Number 9-40-500
 - - Record measurement as per plat of Ottenheimer Addition
 - { } Record measurement as per Survey AD 17 11



NARRATIVE

This partition was done at the request of Dick Haines, on behalf of New Hope for Eastern Oregon Animals, owner of the land within. Mr. Haines wanted to replat the lots as shown. I base the block exteriors of Survey Number 9-40-240 and 9-40-276, both which conduct thorough studies of Ottenheimer Addition. I place the sixteenth corner of the West line of Section 8 as per BLM Manual of Instructions and drive a line to the SW 1/16th pin to establish the North line of Ottenheimers. Finding the pipe at the 1/16th position disturbed, I do not accept its position. The SW section corner was unrecoverable at the time of survey. I position this by extending the line from the H Street centerline the record 40 feet. To establish the East right of way line of 17th Street, I use the offsets shown in Survey 9-40-276 from the Section line. I place the intersection of the West line of 17th Street and the centerline of K Street by proportion along this line. I use the offset given in Survey 9-40-276 to place the centerline intersection of K Street and 13th St. Finding the pins set by Survey Number 9-40-276 harmonious with the block as established, I hold these pins along the West side of this property as found and reject pins set by Survey Number 9-40-42BC. I find no other unusual conditions with this replat.

REGISTERED
PROFESSIONAL
LAND SURVEYOR

OREGON
JUNE 2, 2010

JEFFREY S. HSU
83571

Renewal Date: June 30, 2021

