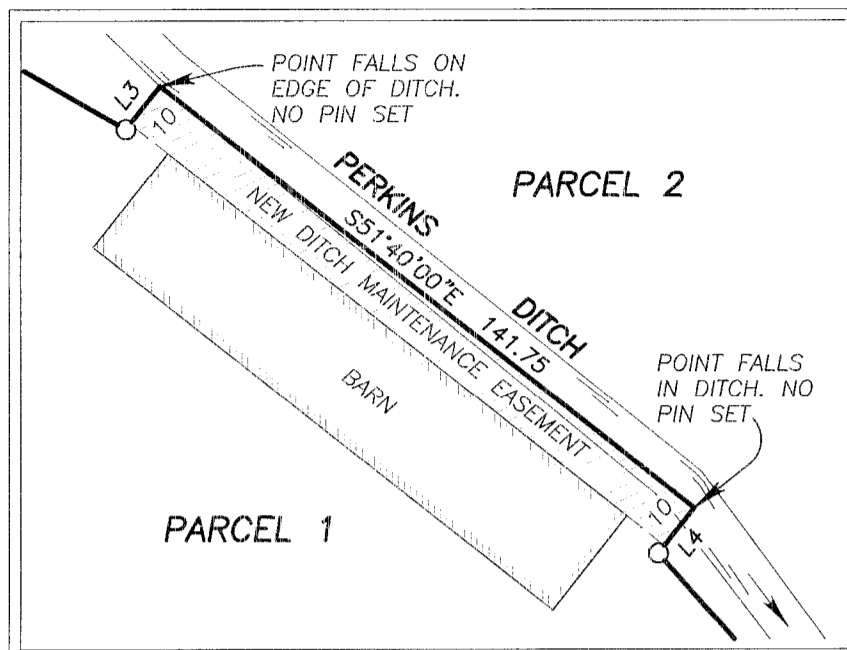


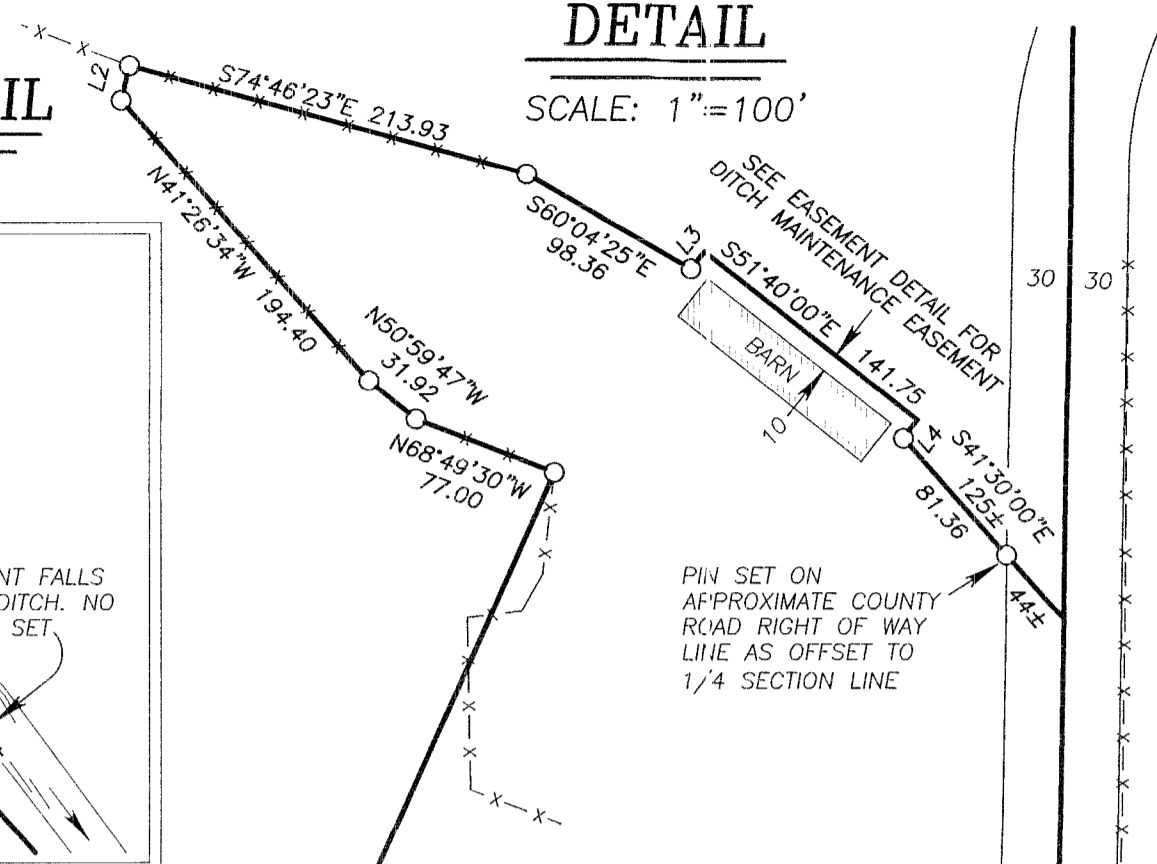
EASEMENT DETAIL

SCALE: 1"=40'



DETAIL

SCALE: 1"=100'

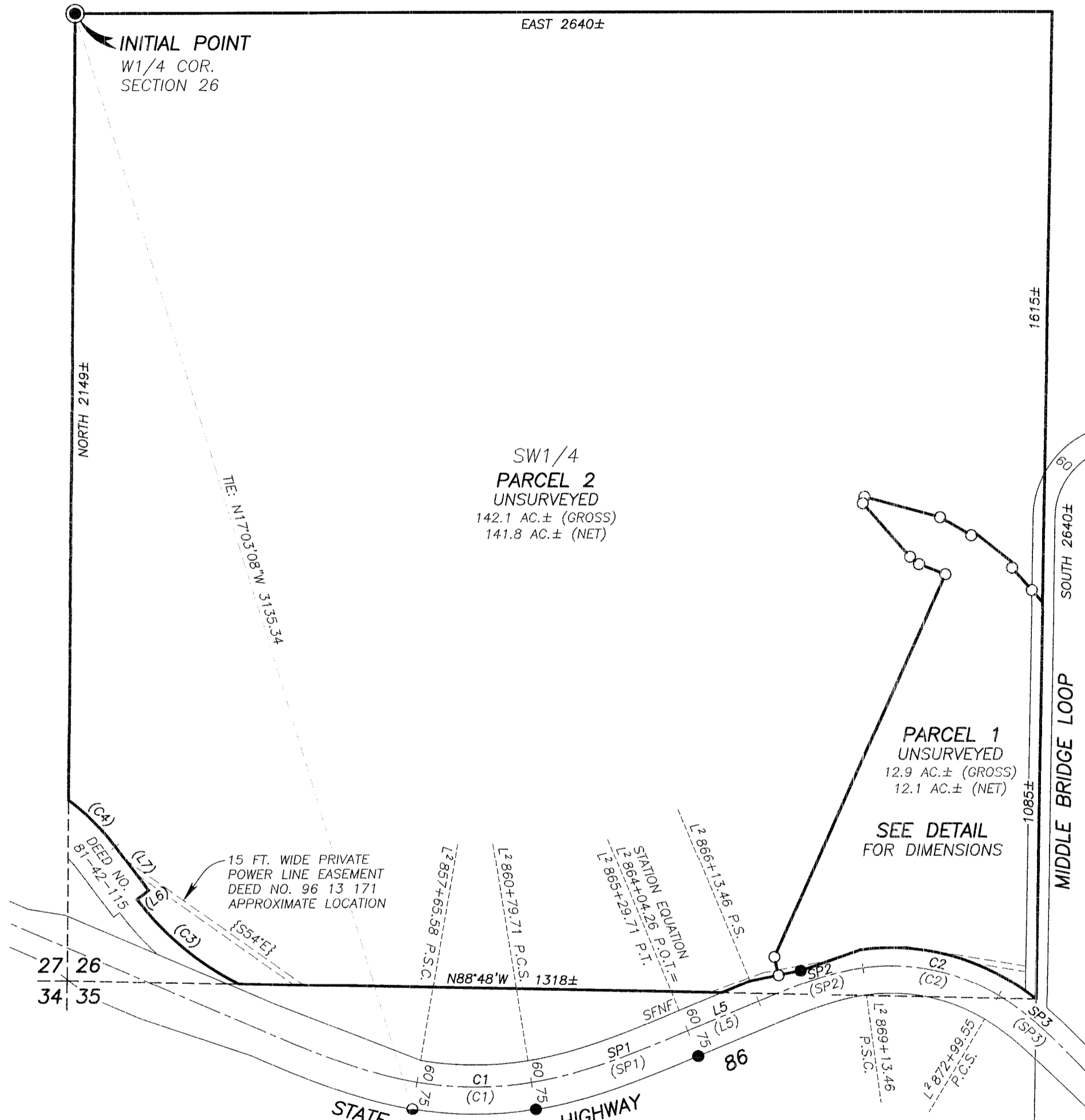


LAND PARTITION PLAT NO. P2020-003

SITUATED IN THE SW1/4 SECTION 26, T.8S., R.42E., W.M., BAKER COUNTY, OREGON

OVERVIEW

SCALE: 1"=300'



CURVE TABLE

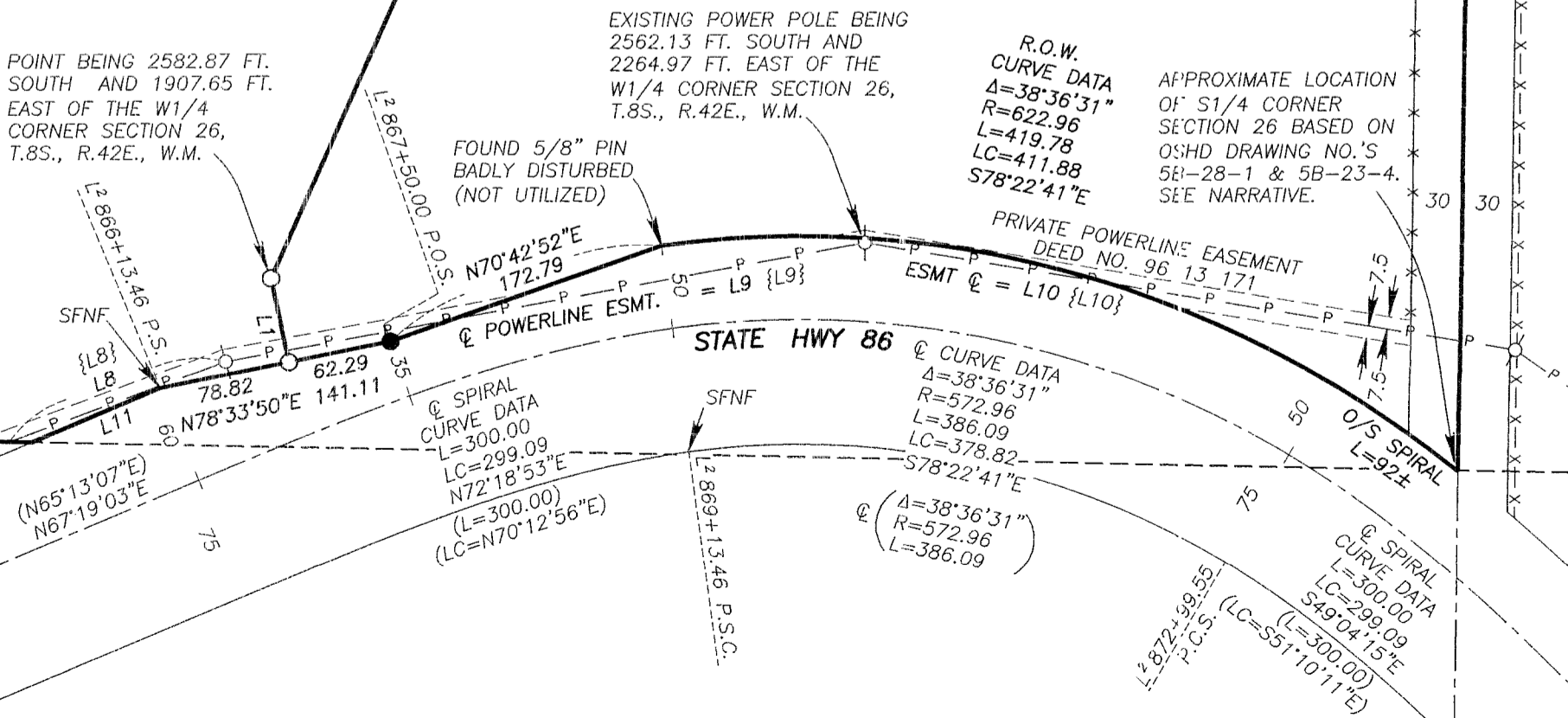
CURVE	RADIUS	DELTA	LENGTH	LONG CHORD BEARING-DIST.
C1	954.93	18°50'53"	314.14	S89°45'30"E 312.72
(C1)	954.93	18°50'53"	314.14	S88°08'34"E 312.72
C2	572.96	38°36'31"	386.09	S78°22'41"E 378.82
(C2)	572.96	38°36'31"	386.09	S80°28'38"E 378.82
(C3)	788.51	26°32'55"	365.37	N50°15'28"W 362.11
(C4)	642.96	16°05'52"	180.64	N45°06'36"W 181.78

SPIRAL CURVE TABLE

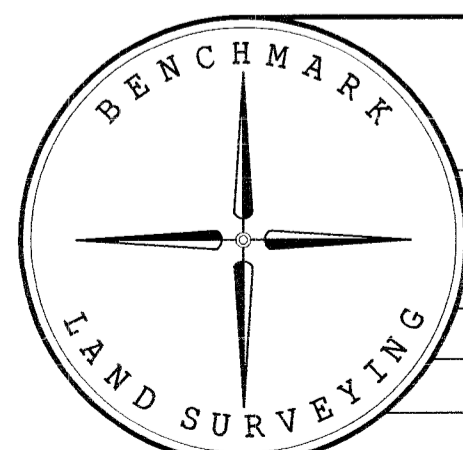
CURVE	LENGTH	LONG CHORD BEARING-DIST.
SP1	450	N71°48'56"E 448.89
(SP1)	450	N69°42'59"E 448.89
SP2	300	N72°18'53"E 299.09
(SP2)	300	N70°12'56"E 299.09
SP3	300	S49°04'15"E 299.09
(SP3)	300	S51°10'11"E 299.09

LINE TABLE

LINE	BEARING	DIST.
L1	N12°00'00"W	51.39
L2	N13°43'06"E	18.39
L3	N38°20'00"E	11.48
L4	S38°20'00"W	12.03
L5	N67°19'03"E	209.19
(L5)	N65°13'07"E	209.19
(L6)	N5°30'1"E	40.00
(L7)	N36°59'W	151.3
{L8}	N71°E	38±
L9	N79°35'16"E	391.07
{L9}	N80°E	350±
L10	S80°38'46"E	396.53
{L10}	S78°E	375±
L11	N67°19'03"E	83.6±



REGISTERED PROFESSIONAL LAND SURVEYOR
Jason L. Hatfield
 OREGON
 NOVEMBER 30, 2007
 JASON L. HATFIELD
 #69454
 EXPIRES: 6/30/2021



BENCHMARK LAND SURVEYING
 217 N. CANYON BLVD. JOHN DAY, OREGON
 1207 DEWEY AVE., BAKER CITY, OREGON
 541-575-1251 ~ 541-523-5852

LAND PARTITION
 SITUATED IN THE SW1/4 SECTION 26,
 T.8S., R.42E., W.M.,
 BAKER COUNTY, OREGON

SURVEYED FOR	PHILLIPS RANCH, INC.	
SURVEYED BY	JLH	2/10/2020
SCALE: AS SHOWN	DRAWN BY: JLH	SHEET 1 OF 2