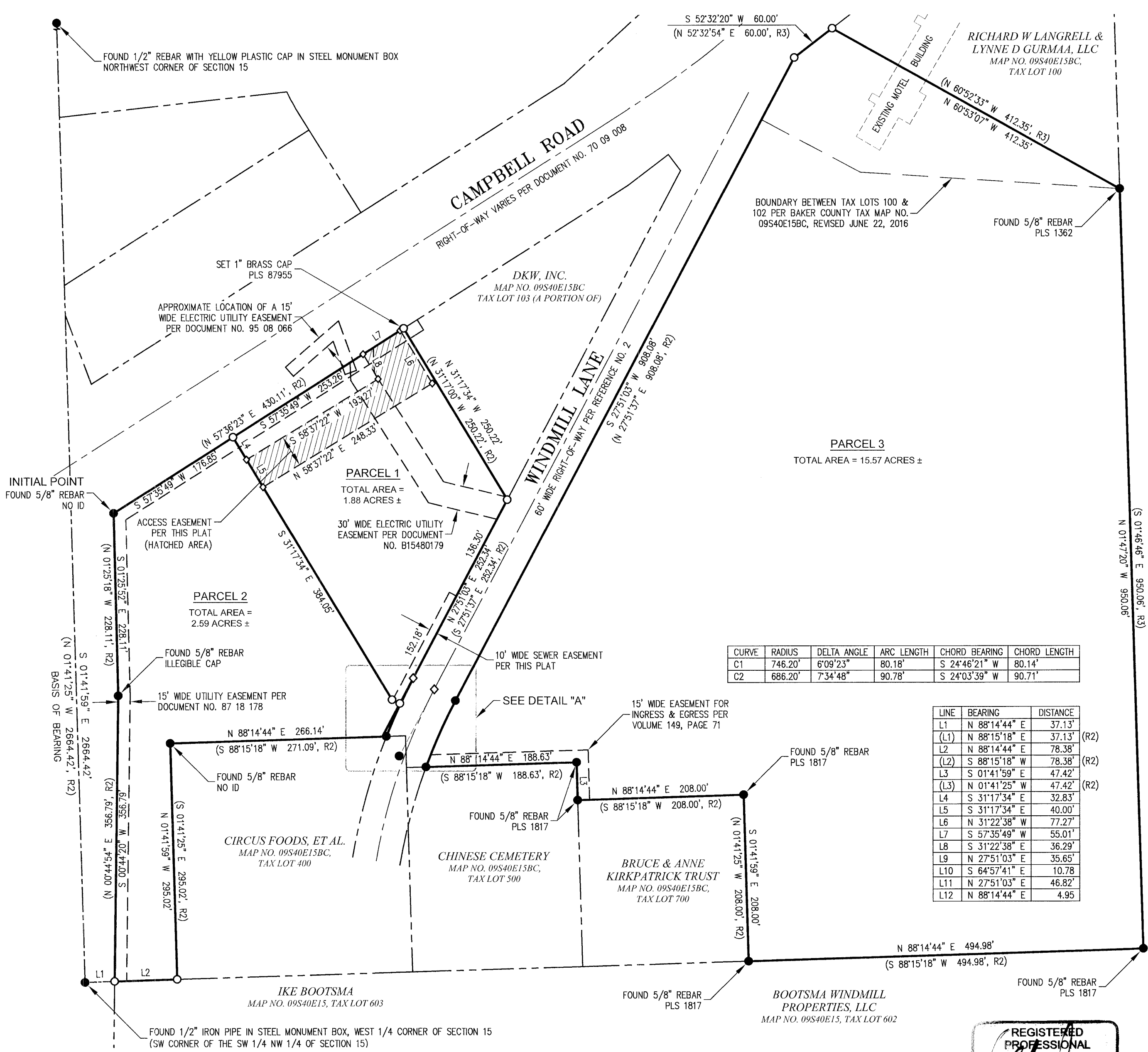


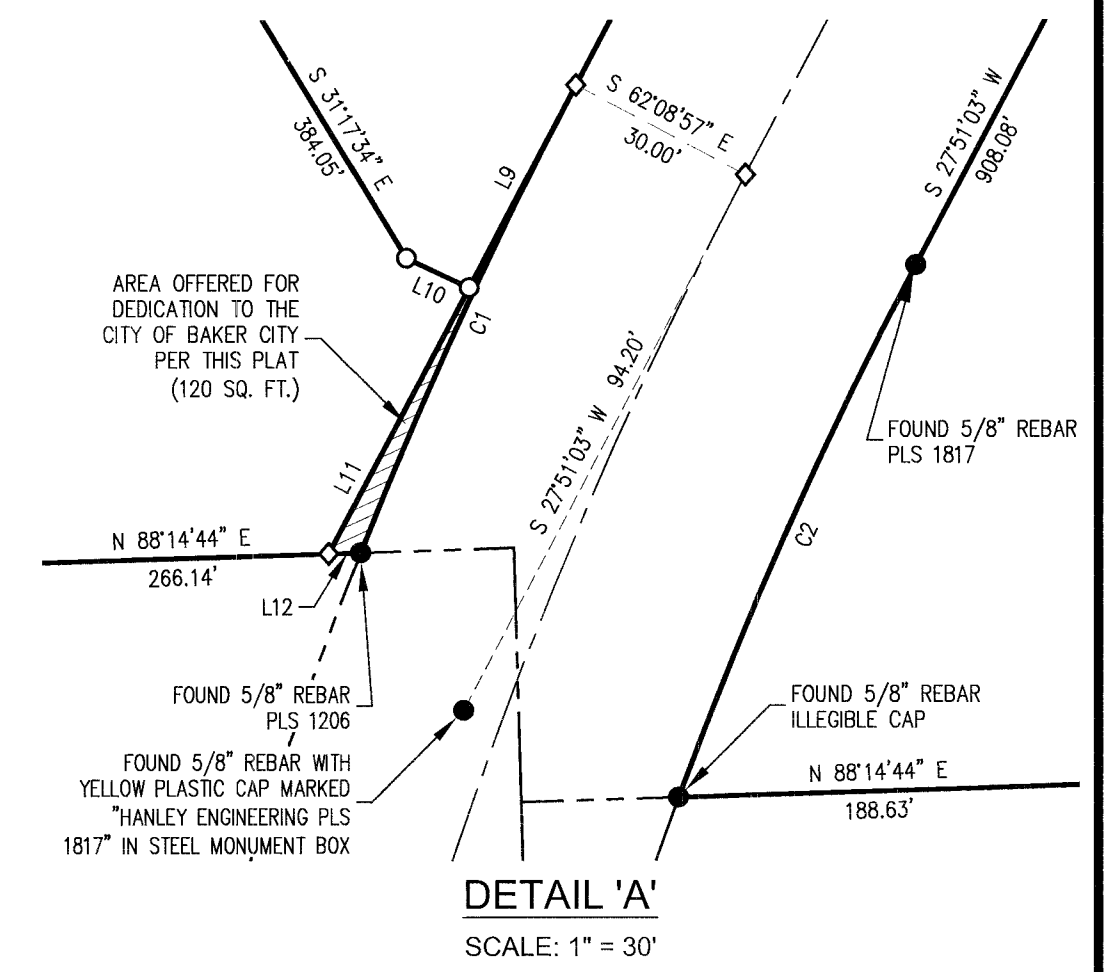
LEGEND:

- SUBJECT TRACT PROPERTY LINES
- - - ADJACENT PROPERTY LINES
- - - RIGHT-OF-WAY CENTERLINES
- - - EASEMENT LINES
- FOUND MONUMENT AS NOTED
- ◇ DIMENSION POINT, NOTHING FOUND OR SET
- SET 5/8"x30" REBAR & GREEN CAP, PLS 87955 (UNLESS NOTED OTHERWISE)
- () RECORD DATA PER REFERENCE AS NOTED
- R1, R2 REFERENCE NO.



CURVE	RADIUS	DELTA ANGLE	ARC LENGTH	CHORD BEARING	CHORD LENGTH
C1	746.20'	6°09'23"	80.18'	S 24°46'21" W	80.14'
C2	686.20'	7°34'48"	90.78'	S 24°03'39" W	90.71'

LINE	BEARING	DISTANCE
L1	N 88°14'44" E	37.13'
(L1)	N 88°15'18" E	37.13' (R2)
L2	N 88°14'44" E	78.38'
(L2)	N 88°15'18" W	78.38' (R2)
L3	S 01°41'59" E	47.42'
(L3)	N 01°41'25" W	47.42' (R2)
L4	S 31°17'34" E	32.83'
L5	S 31°17'34" E	40.00'
L6	N 31°22'38" W	77.27'
L8	S 31°22'38" E	36.29'
L9	N 27°51'03" E	35.65'
L10	S 64°57'41" E	10.78'
L11	N 27°51'03" E	46.82'
L12	N 88°14'44" E	4.95'



BASIS OF BEARING:
 NORTH WAS ESTABLISHED WITH GPS OBSERVATIONS USING THE OREGON STATE PLANE COORDINATE SYSTEM (NORTH ZONE, NAD83).

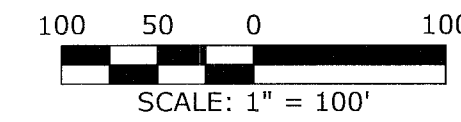
- REFERENCES:**
- PARTITION PLAT NO. P1990-003, FILED IN JUNE, 1990
 - PARTITION PLAT NO. P1992-013, FILED ON NOVEMBER 23, 1992
 - PARTITION PLAT NO. P1994-007, FILED ON MAY 11, 1994
 - PARTITION PLAT NO. P2001-010, FILED ON JUNE 29, 2001
- ALL OF THE OFFICIAL RECORDS OF BAKER COUNTY, OREGON.

DATE OF SURVEY:
 MARCH 22, 2018

I HEREBY CERTIFY THAT THIS IS A TRUE AND EXACT COPY OF THE ORIGINAL.

[Signature]
 GLEN C. ARMSTRONG
 PROFESSIONAL LAND SURVEYOR NO. 87955

REGISTERED PROFESSIONAL LAND SURVEYOR
 GLEN CALVIN ARMSTRONG
 87955
 EXPIRES: 12-31-18
 3-26-18



SCALE: 1" = 100'
 SHEET 2 OF 2

PARTITION PLAT
FOR DKW, INC, AND
HAT BRAND LAND & LIVESTOCK, LLC

A REPLAT OF PARCEL NO. 1 OF PARTITION PLAT NO. P1994-007
 SITUATED IN THE SOUTHWEST 1/4 OF THE NORTHWEST 1/4
 OF SECTION 15, TOWNSHIP 9 SOUTH, RANGE 40 EAST, W.M.

BAKER CITY BAKER COUNTY OREGON

US GEOMATICS
 P.O. BOX 3299 1071 HASKELL STREET
 RENO, NV 89505 RENO, NV 89509

PHONE (775) 786-5111
 FAX (775) 297-4668
 WWW.USGEOMATICS.COM
 INFO@USGEOMATICS.COM