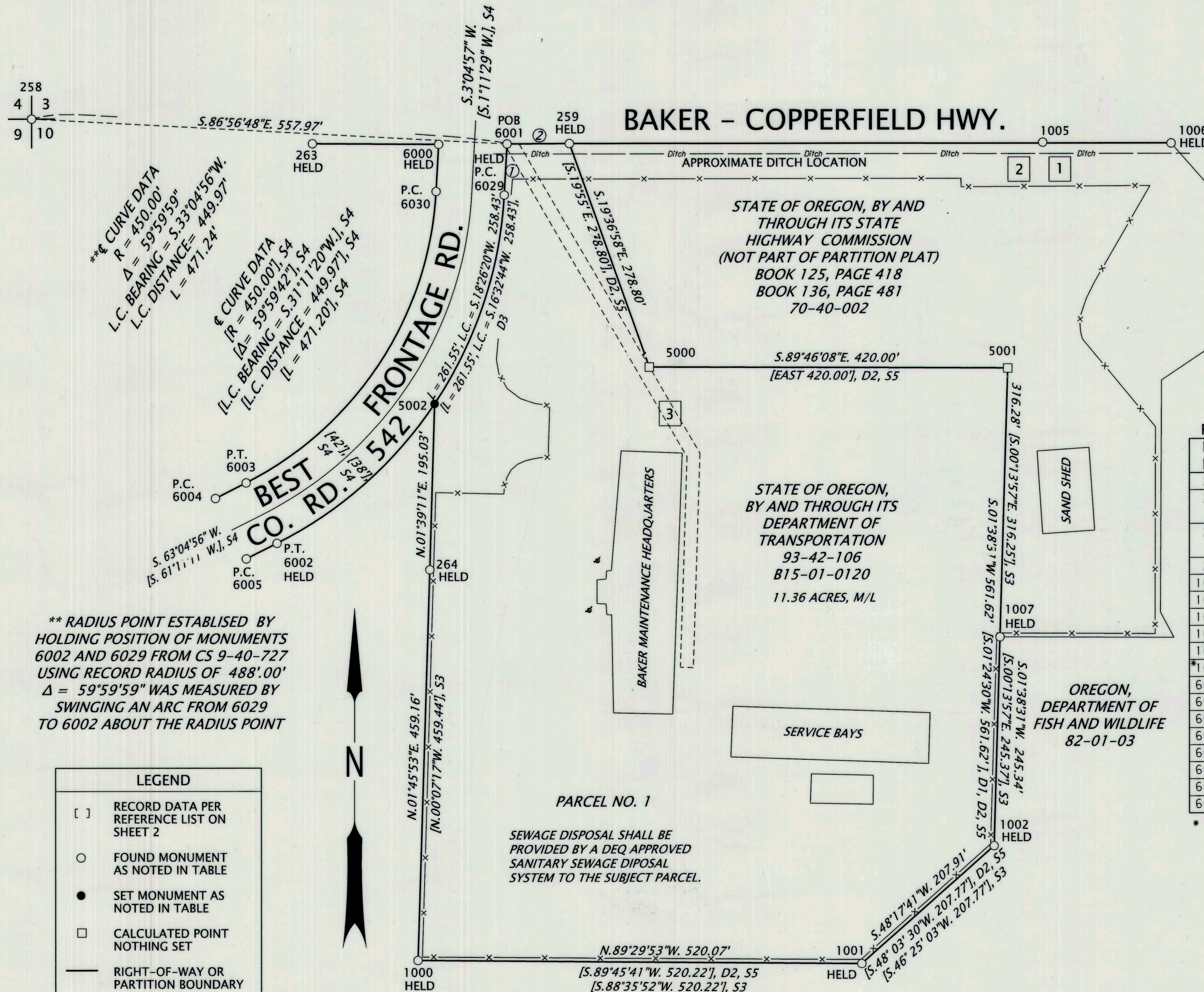


NW1/4 S. 10, T. 9 S., R. 40 E., WM.

PARTITION PLAT NO. **P2017-006**



NOTES

- ① N.03°04'57"E. 60.17' [S.01°11'29"W. 60.11', CALC.], S4
- ② N.89°44'31"E. 73.03' [N.87°46'17"E. 73.04', CALC.], S4

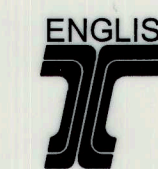
REGISTERED PROFESSIONAL LAND SURVEYOR

Robert S. Butler

OREGON JULY 25, 1995 ROBERT ERICH BUTLER

EXPIRES: 12/31/2017

OREGON DEPARTMENT OF TRANSPORTATION



MINOR PARTITION PLAT
BAKER MAINTENANCE STATION
BAKER - COPPERFIELD HIGHWAY
BAKER COUNTY, OREGON

FOR ODOT REGION 5
3012 ISLAND AVENUE
LA GRANDE, OR 97850

AUGUST 24, 2017
SCALE: 1" = 100'
SHEET 1 OF 2