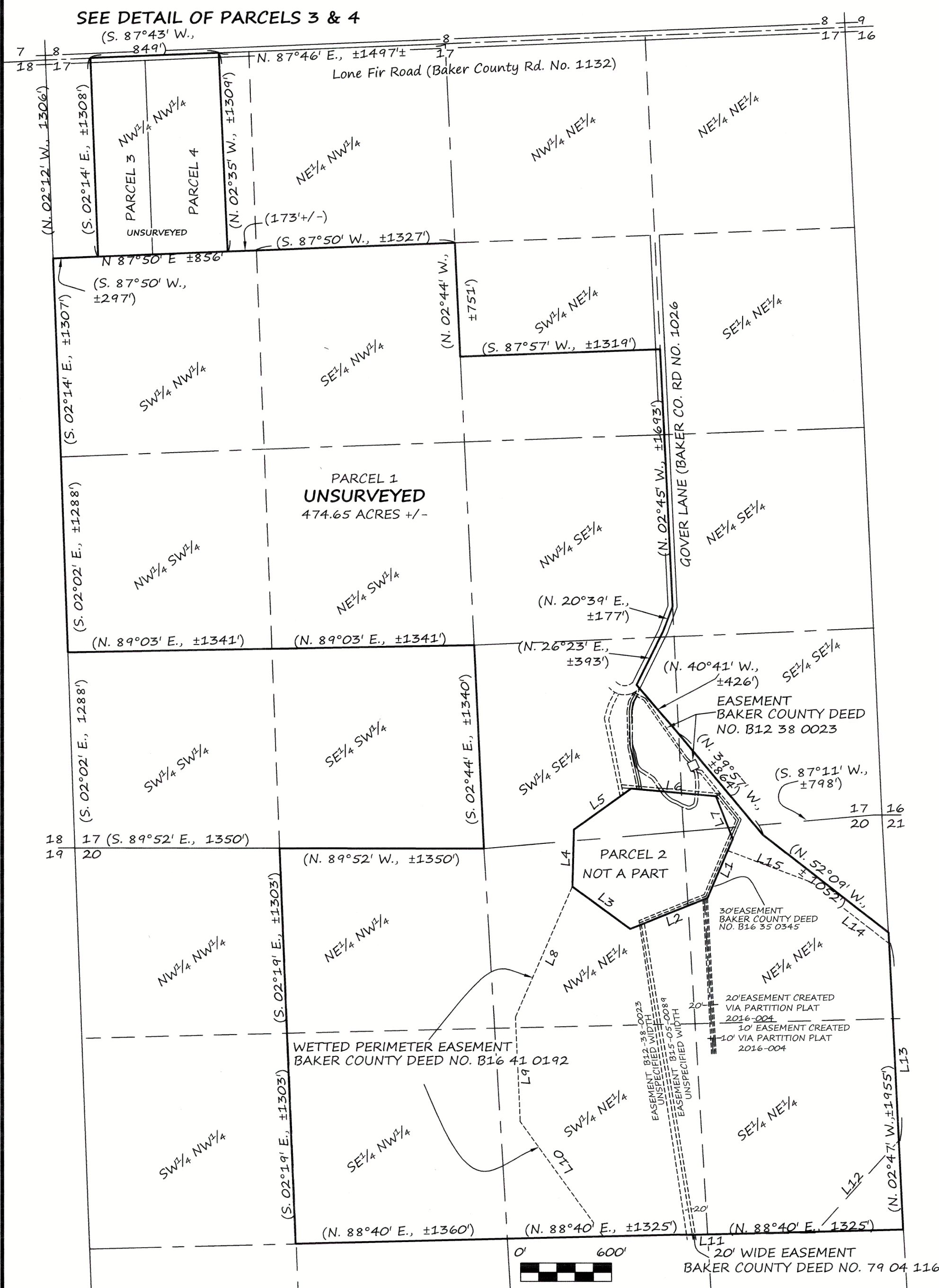


REPLAT NO. P2017-001

LOCATED IN PARTITION PLAT 2016-004; IN THE SOUTH 1/2 OF THE SOUTHWEST 1/4 OF THE NORTHEAST 1/4; THE WEST 1/2 OF THE SOUTHEAST 1/4; THE NORTH 1/2 OF THE SOUTHWEST 1/4; THE SOUTH 1/2 OF THE NORTHWEST 1/4; THE NORTHWEST 1/4 OF THE NORTHWEST 1/4 AND THE SOUTHEAST 1/4 OF THE SOUTHEAST 1/4 OF SECTION 17, ALSO, THE EAST 1/2 OF THE NORTHWEST 1/4 AND THE NORTHEAST 1/4 OF SECTION 20 IN
 TOWNSHIP 8 SOUTH, RANGE 46 EAST, WILLAMETTE MERIDIAN,
 BAKER COUNTY, OREGON.



NOTE

Sewage disposal shall be provided by a DEQ approved sanitary sewage disposal system for each parcel.

LEGEND

() Record data per Baker County Partition Plat 2016-004

PARCEL 2 LINE TABLE

| LINE | BEARING | DISTANCE |
|------|------------------|----------|
| L1 | N. 23°17'01" E., | 422.77' |
| L2 | N. 68°06'20" E., | 549.98' |
| L3 | S. 53°54'11" E., | 471.71' |
| L4 | S. 01°36'04" W., | 376.23' |
| L5 | S. 54°22'23" W., | 463.23' |
| L6 | N. 84°52'57" W., | 561.23' |
| L7 | N. 21°52'27" W., | 302.09' |

WETTED PERIMETER AND BUFFER ZONE EASEMENT LINE TABLE

| LINE | BEARING | DISTANCE |
|------|--------------------|-----------|
| L8 | (N. 23°37'54" E.,) | (934.21') |
| L9 | (N. 02°34'44" W.,) | (687.93') |
| L10 | (N. 35°58'09" W.,) | (938.6±) |
| L11 | (S. 88°40'07" W.,) | (1397.0±) |
| L12 | (S. 42°23'13" W.,) | (814.8±) |
| L13 | (S. 02°46'52" E.,) | (1301.7±) |
| L14 | (S. 52°08'54" E.,) | (664.7±) |
| L15 | (S. 69°17'10" E.,) | (575.38') |

REGISTERED PROFESSIONAL LAND SURVEYOR
 THOMAS J. HANLEY
 JULY 13, 1979
 1817

HANLEY ENGINEERING, INC.
 2043 MAIN STREET
 BAKER CITY, OREGON

Renews June 30, 2017