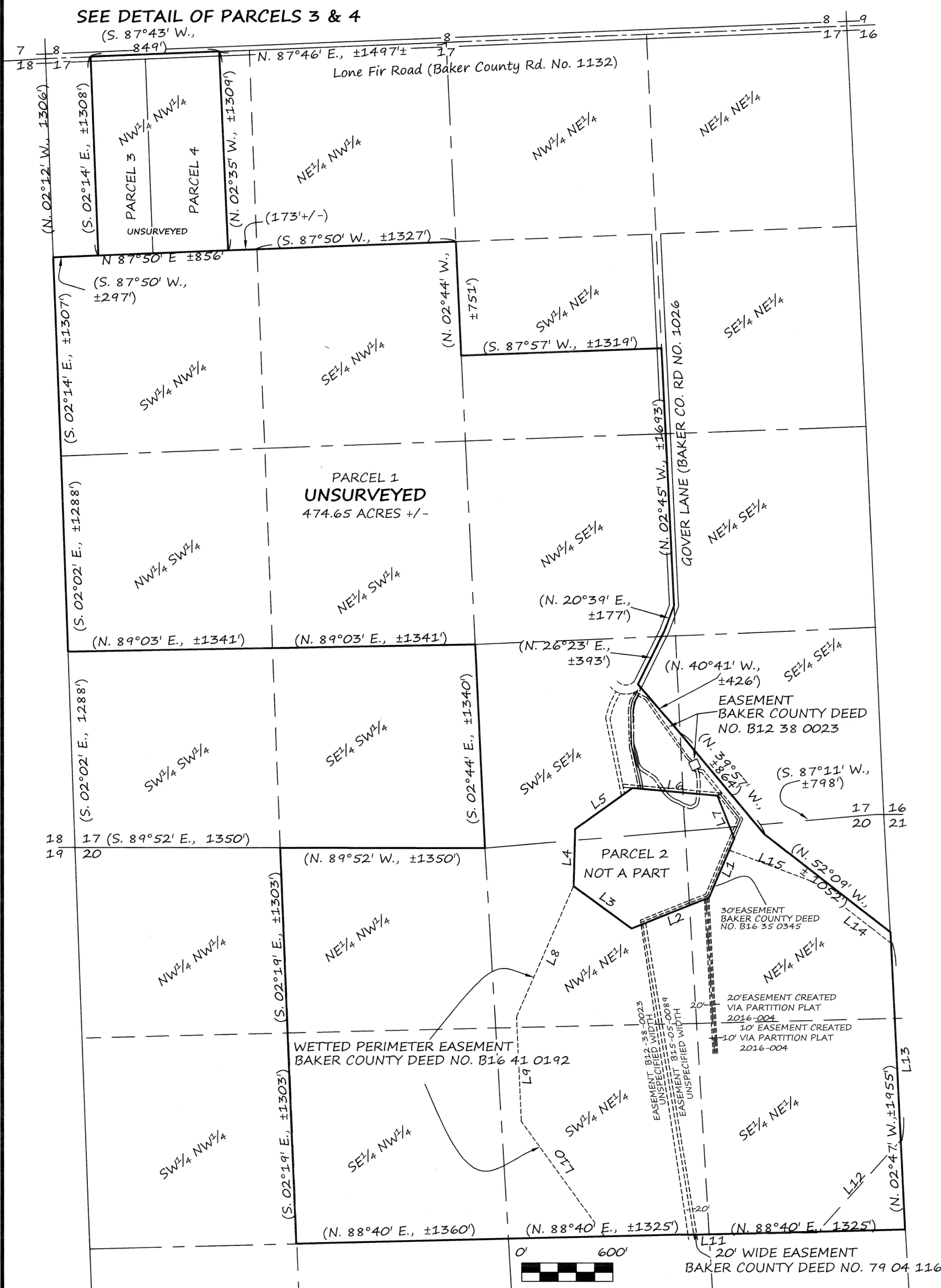


REPLAT NO. P2017-001

LOCATED IN PARTITION PLAT 2016-004; IN THE SOUTH 1/2 OF THE SOUTHWEST 1/4 OF THE NORTHEAST 1/4; THE WEST 1/2 OF THE SOUTHEAST 1/4; THE NORTH 1/2 OF THE SOUTHWEST 1/4; THE SOUTH 1/2 OF THE NORTHWEST 1/4; THE NORTHWEST 1/4 OF THE NORTHWEST 1/4 AND THE SOUTHEAST 1/4 OF THE SOUTHEAST 1/4 OF SECTION 17, ALSO, THE EAST 1/2 OF THE NORTHWEST 1/4 AND THE NORTHEAST 1/4 OF SECTION 20 IN
 TOWNSHIP 8 SOUTH, RANGE 46 EAST, WILLAMETTE MERIDIAN,
 BAKER COUNTY, OREGON.



NOTE

Sewage disposal shall be provided by a DEQ approved sanitary sewage disposal system for each parcel.

LEGEND

() Record data per Baker County Partition Plat 2016-004

PARCEL 2 LINE TABLE

LINE	BEARING	DISTANCE
L1	N. 23°17'01" E.,	422.77'
L2	N. 68°06'20" E.,	549.98'
L3	S. 53°54'11" E.,	471.71'
L4	S. 01°36'04" W.,	376.23'
L5	S. 54°22'23" W.,	463.23'
L6	N. 84°52'57" W.,	561.23'
L7	N. 21°52'27" W.,	302.09'

WETTED PERIMETER AND BUFFER ZONE EASEMENT LINE TABLE

LINE	BEARING	DISTANCE
L8	(N. 23°37'54" E.,)	(934.21')
L9	(N. 02°34'44" W.,)	(687.93')
L10	(N. 35°58'09" W.,)	(938.6±)
L11	(S. 88°40'07" W.,)	(1397.0±)
L12	(S. 42°23'13" W.,)	(814.8±)
L13	(S. 02°46'52" E.,)	(1301.7±)
L14	(S. 52°08'54" E.,)	(664.7±)
L15	(S. 69°17'10" E.,)	(575.38')

REGISTERED PROFESSIONAL LAND SURVEYOR

THOMAS J. HANLEY
 OREGON
 JULY 13, 1979
 THOMAS J. HANLEY
 1817

HANLEY ENGINEERING, INC.
 2043 MAIN STREET
 BAKER CITY, OREGON

Renews June 30, 2017