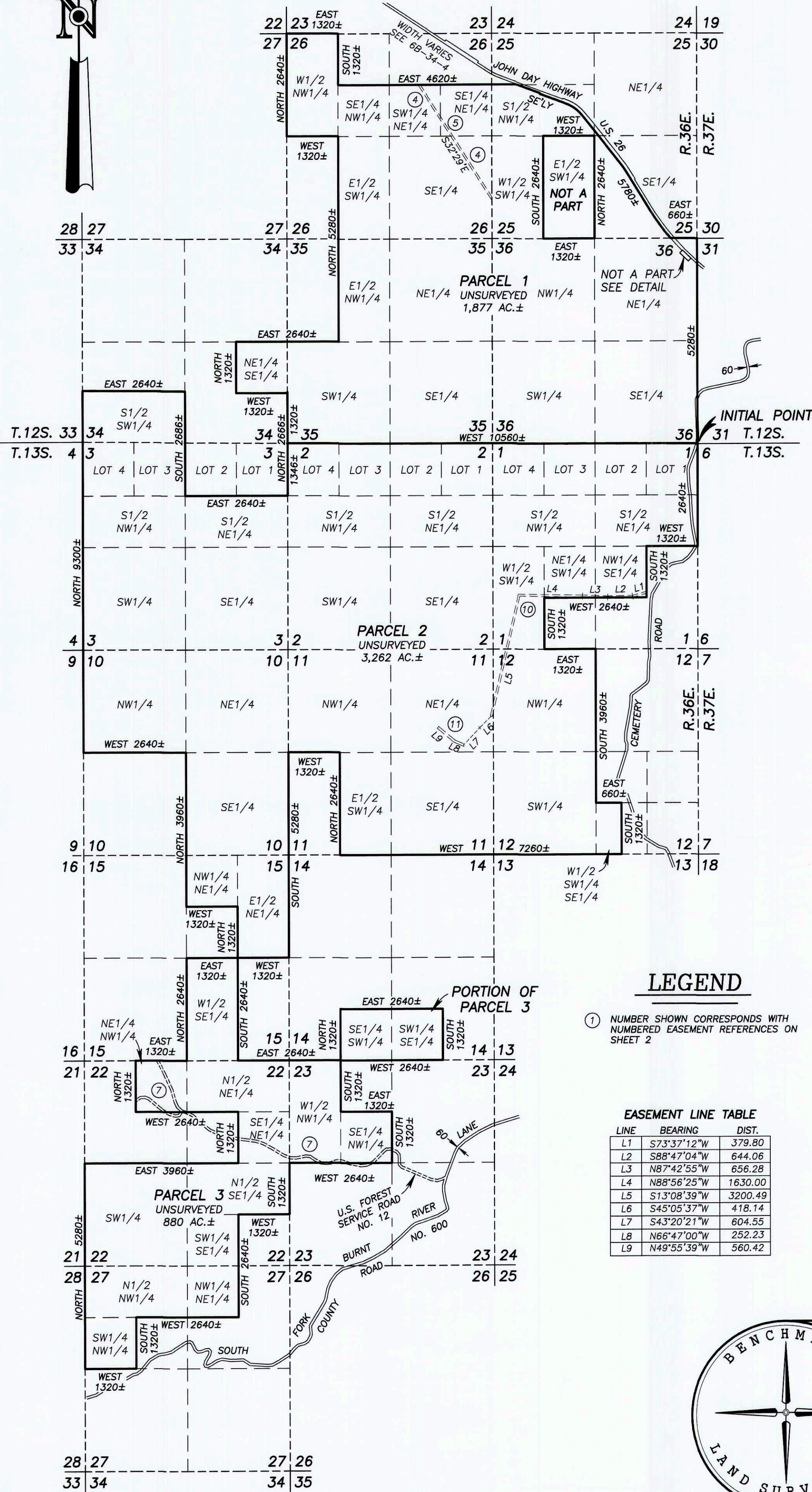


LAND PARTITION PLAT NO. P2015-009

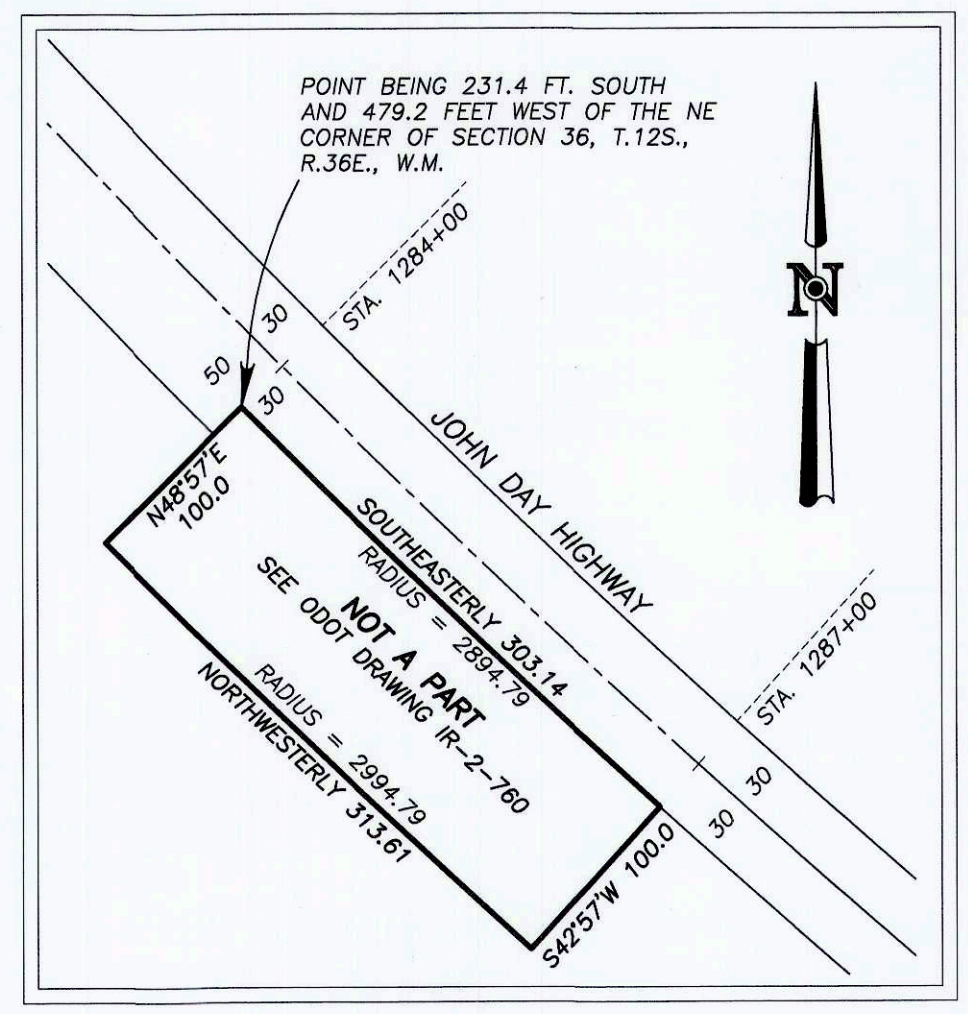
A PARTITION OF PARCEL 2 OF PARTITION PLAT NO. P2002-008
SITUATED IN SECTIONS 25, 26, 34, 35 AND 36, T.12S., R.36E. AND IN
SECTIONS 1, 2, 3, 10, 11, 12, 14, 15, 22, 23 AND 27, T.13S., R.36E., W.M.,
BAKER COUNTY, OREGON

B15 40 0031



DETAIL

SCALE: 1"=100'



NARRATIVE

THIS PARTITION WAS PREPARED FOR THE CONEEN FAMILY TRUST AND THE SUSAN CONEEN FAMILY TRUST WITH THE PURPOSE OF DIVIDING PARCEL 2 OF LAND PARTITION NO. P2002-008 INTO THREE PARCELS, AS SHOWN. NO SURVEY WAS PERFORMED FOR THIS PARTITION PROCESS.

THAT PORTION OF PARCEL 3 INCLUDED WITHIN THE SE1/4SW1/4 AND THE SW1/4SE1/4 OF SECTION 14, T.13S., R.36E. IS NOT CONTIGUOUS WITH THE REMAINDER OF PARCEL 3. THIS PORTION WAS INCLUDED WITHIN THE BOUNDARY OF PARCEL 2 OF LAND PARTITION PLAT NO. P2002-008, AND THEREFORE THE BAKER COUNTY PLANNING DEPARTMENT REQUIRED THAT IT BE INCLUDED IN THIS PARTITION.

ALL DIMENSIONS AND AREAS SHOWN HEREON ARE APPROXIMATE AND ARE SUBJECT TO CHANGE UPON EXECUTION OF AN ACTUAL SURVEY. THE LOCATIONS OF ALL ROADS, EASEMENTS AND RIGHTS OF WAY ARE ALSO APPROXIMATE.

REFERENCES

- AMERITITLE TITLE NO. 54699AM
- INSTRUMENT NO. B15 23 109
- LAND PARTITION PLAT NO. P2002-008
- ODOT DRAWING NO.'S 68-34-4 & IR-2-760

NOTES:

- SEWAGE DISPOSAL FOR PARCEL 3 SHALL BE PROVIDED BY A DEQ APPROVED SANITARY SEWAGE DISPOSAL SYSTEM.

LEGEND

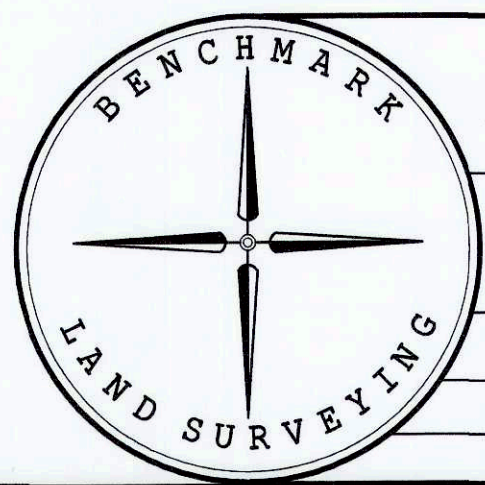
- ① NUMBER SHOWN CORRESPONDS WITH NUMBERED EASEMENT REFERENCES ON SHEET 2

EASEMENT LINE TABLE

LINE	BEARING	DIST.
L1	S73°37'12"W	379.80
L2	S88°47'04"W	644.06
L3	N87°42'55"W	656.28
L4	N88°56'25"W	1630.00
L5	S13°08'39"W	3200.49
L6	S45°05'37"W	418.14
L7	S43°20'21"W	604.55
L8	N66°47'00"W	252.23
L9	N49°55'39"W	560.42

REGISTERED PROFESSIONAL LAND SURVEYOR

Jason L. Hatfield
OREGON
NOVEMBER 30, 2007
JASON L. HATFIELD
#69454
EXPIRES: 6/30/2017



BENCHMARK LAND SURVEYING
217 N. CANYON BLVD. JOHN DAY, OREGON
2101 MAIN STREET, STE 223 BAKER CITY, OREGON
541-575-1251 ~ 800-699-0516

LAND PARTITION
A PARTITION OF PARCEL 2 OF PARTITION PLAT NO. P2002-008
SITUATED IN SECTIONS 25, 26, 34, 35 AND 36, T.12S., R.36E.
AND IN SECTIONS 1, 2, 3, 10, 11, 12, 14, 15, 22, 23 AND 27,
T.13S., R.36E., W.M., BAKER COUNTY, OREGON

PREPARED FOR	THE CONEEN FAMILY TRUST AND THE SUSAN CONEEN FAMILY TRUST	
PREPARED BY	JLH	9/10/2015
SCALE: 1"=2000'		SHEET 1 OF 2

B15 40 0032

B15 40 0033