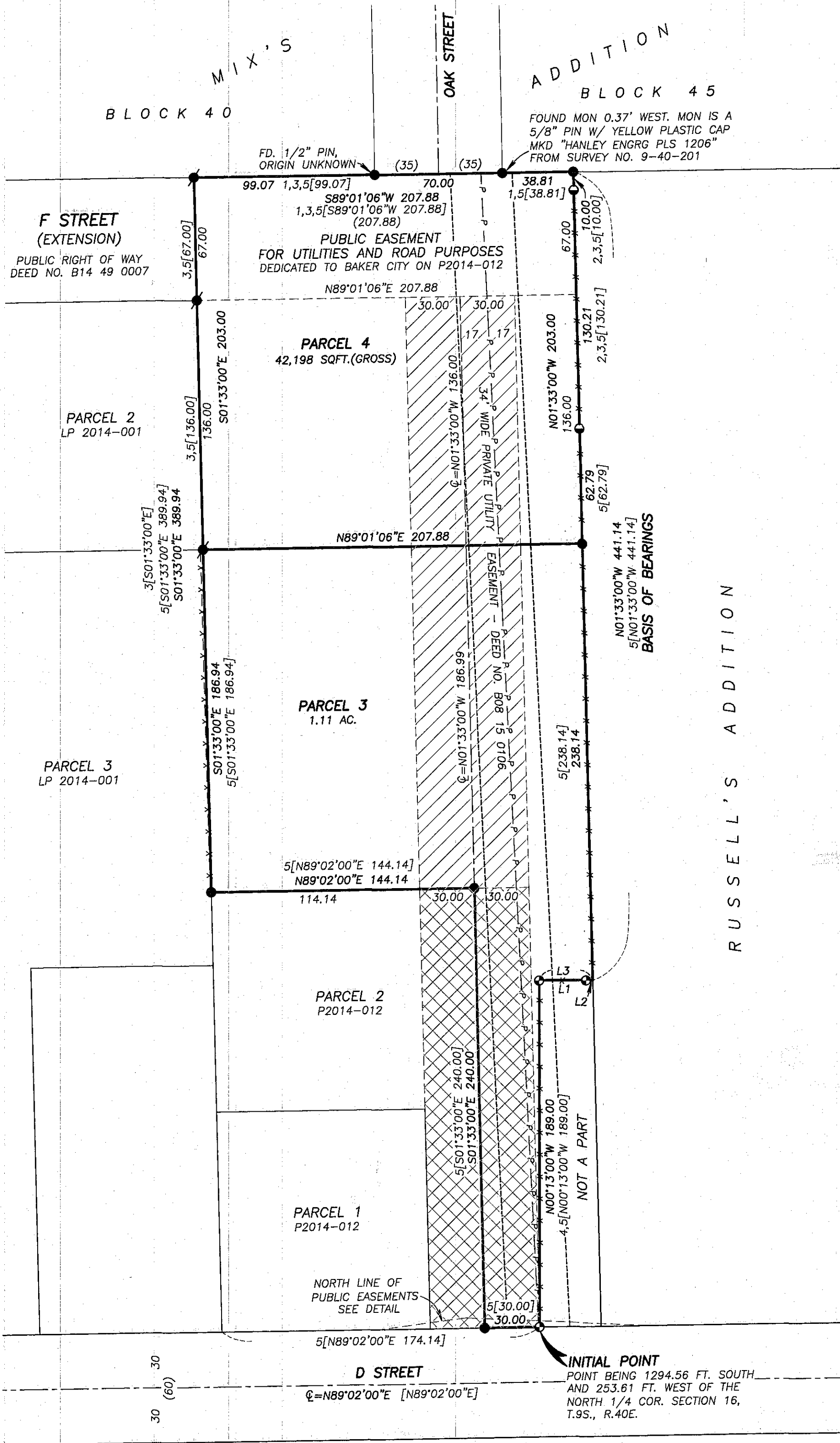


# LAND PARTITION PLAT NO. P2015-003

A PARTITION OF PARCEL 3 OF LAND PARTITION NO. P2014-012  
SITUATED IN THE NE1/4NW1/4 SECTION 16, T.9S., R.40E., W.M.,  
BAKER CITY, BAKER COUNTY, OREGON

815 13 0124



## BASIS OF BEARINGS

RECORD LAND PARTITION PLAT NO. P2014-012

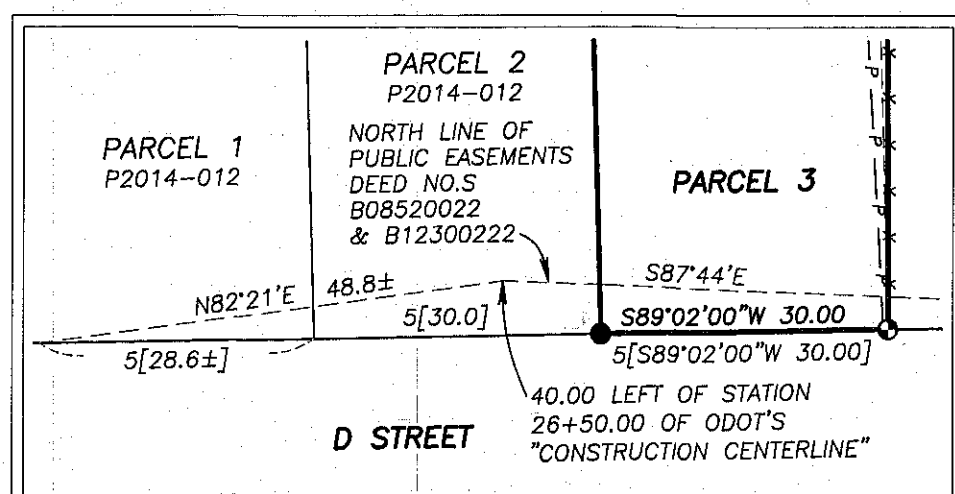
## LEGEND

- FOUND 5/8" IRON PIN WITH ATTACHED YELLOW PLASTIC CAP MARKED "BENCHMARK SURVEYING" FROM SURVEY NO. 9-40-725
- FOUND 5/8" IRON PIN WITH ATTACHED YELLOW PLASTIC CAP MARKED "BENCHMARK SURVEYING" FROM LAND PARTITION PLAT NO. P2014-001
- FOUND 5/8" IRON PIN WITH ATTACHED YELLOW PLASTIC CAP MARKED "BENCHMARK SURVEYING" FROM LAND PARTITION PLAT NO. P2014-012 - UNLESS OTHERWISE NOTED
- FOUND 5/8" IRON PIN WITH ATTACHED YELLOW PLASTIC CAP MARKED "HANLEY ENGRG PLS 1206" FROM SURVEY NO. 9-40-264
- ( ) DEED AND/OR PLAT RECORD BEARING AND DISTANCE
- [ ] RECORD BEARING AND DISTANCE FROM SURVEY NO. 9-40-130BC
- 1[ ] RECORD BEARING AND DISTANCE FROM SURVEY NO. 9-40-201
- 2[ ] RECORD BEARING AND DISTANCE FROM SURVEY NO. 9-40-264
- 3[ ] RECORD BEARING AND DISTANCE FROM PARTITION PLAT NO. 2014-001
- 4[ ] RECORD BEARING AND DISTANCE FROM SURVEY NO. 9-40-725
- 5[ ] RECORD BEARING AND DISTANCE FROM PARTITION PLAT NO. P2014-012
- X-X FENCE LINE
- P-P OVERHEAD POWER LINE
- ▨ NEW 60.00 FOOT WIDE PUBLIC UTILITY EASEMENT DEDICATED TO BAKER CITY
- ▨ 60.00 FOOT WIDE PRIVATE RECIPROCAL ACCESS & UTILITY EASEMENT FROM LAND PARTITION PLAT NO. P2014-012

815 13 0125

## DETAIL

SCALE: 1"=20'



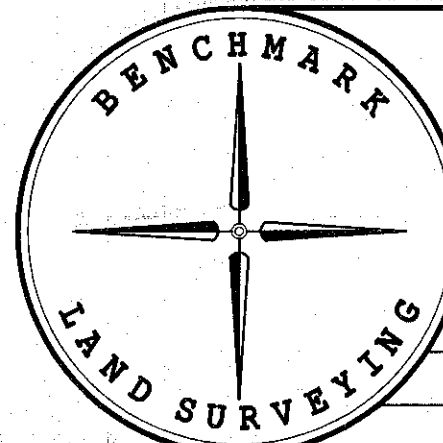
LINE TABLE  
(MEASURED DIMENSIONS MATCH THOSE FROM RECORD SURVEY NO. 9-40-725 AND PARTITION PLAT NO. P2014-012)

LINE	BEARING	DISTANCE
L1	N89°17'00"E	28.34
L2	N89°17'00"E	1.00
L3	N89°17'00"E	29.34

815 13 0125

REGISTERED PROFESSIONAL LAND SURVEYOR

*Jason L. Hatfield*  
OREGON  
NOVEMBER 30, 2007  
JASON L. HATFIELD  
#69454  
EXPIRES: 6/30/2015



BENCHMARK LAND SURVEYING  
217 N. CANYON BLVD. JOHN DAY, OREGON  
2101 MAIN STREET, STE 223 BAKER CITY, OREGON  
541-575-1251 ~ 800-699-0516

LAND PARTITION  
A PARTITION OF PARCEL 3 OF LAND PARTITION NO. P2014-012  
SITUATED IN THE NE1/4NW1/4 SECTION 16, T.9S., R.40E., W.M.,  
BAKER CITY, BAKER COUNTY, OREGON

SURVEYED FOR	LANDMAR CONSTRUCTION, INC.	
SURVEYED BY	JLH & MCS	3/3/2015
SCALE: 1"= 50'	DRAWN BY: JLH	SHEET 1 OF 2