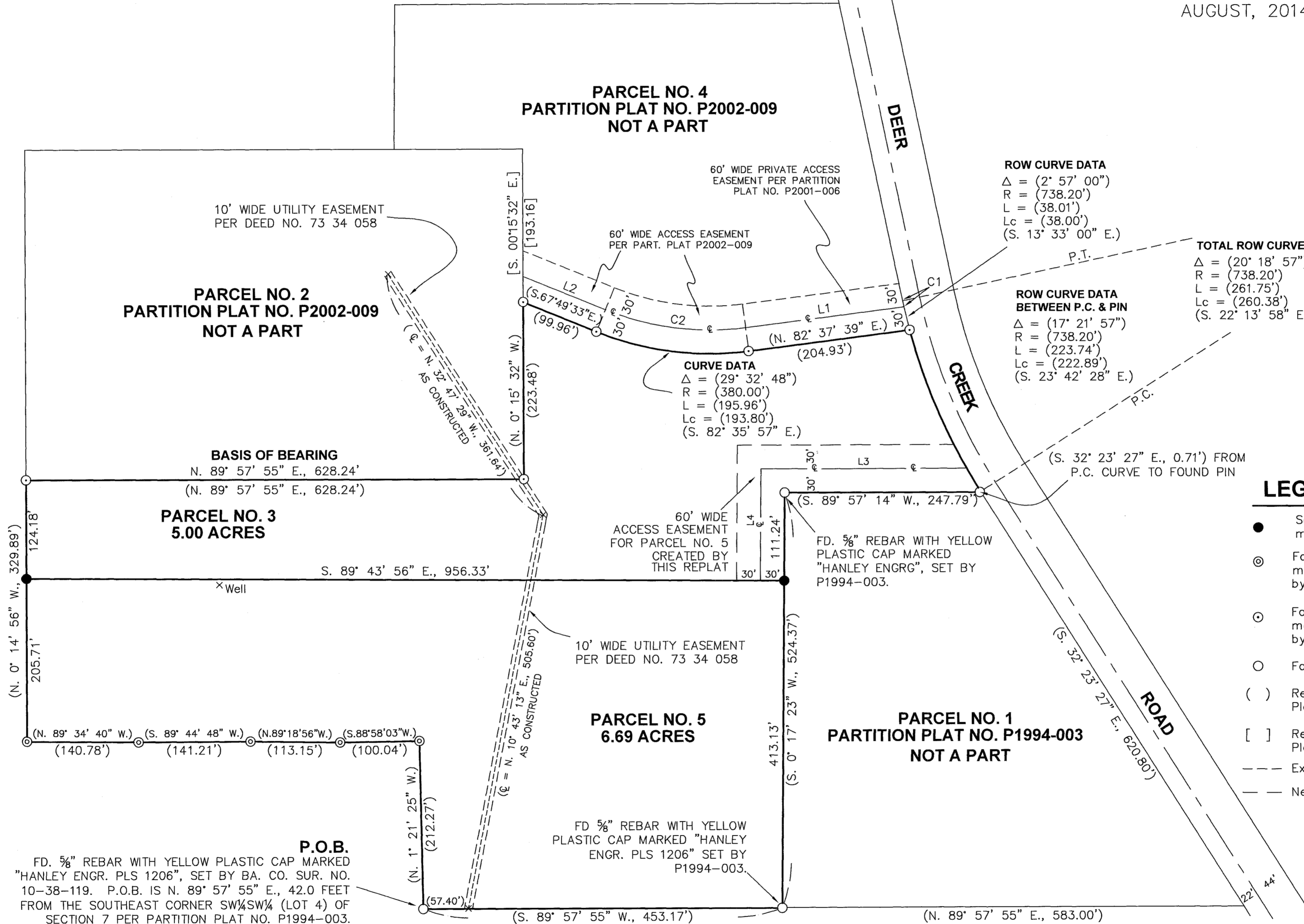


SW¹/₄ OF SECTION 7, T. 10 S., R. 38 E., W.M.

REPLAT NO. P2014-007

REPLAT OF PARCEL 3 OF PARTITION PLAT NO. P2001-006.
LAND LOCATED IN THE SOUTHWEST QUARTER OF SECTION 7,
TOWNSHIP 10 SOUTH, RANGE 38 EAST, WILLAMETTE MERIDIAN,
BAKER COUNTY, OREGON
AUGUST, 2014

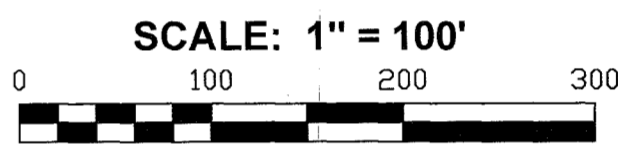


ROW CURVE DATA
 $\Delta = (2^\circ 57' 00'')$
 $R = (738.20')$
 $L = (38.01')$
 $Lc = (38.00')$
 $(S. 13^\circ 33' 00'' E.)$

TOTAL ROW CURVE DATA
 $\Delta = (20^\circ 18' 57'')$
 $R = (738.20')$
 $L = (261.75')$
 $Lc = (260.38')$
 $(S. 22^\circ 13' 58'' E.)$

ROW CURVE DATA BETWEEN P.C. & PIN
 $\Delta = (17^\circ 21' 57'')$
 $R = (738.20')$
 $L = (223.74')$
 $Lc = (222.89')$
 $(S. 23^\circ 42' 28'' E.)$

CURVE DATA
 $\Delta = (29^\circ 32' 48'')$
 $R = (380.00')$
 $L = (195.96')$
 $Lc = (193.80')$
 $(S. 82^\circ 35' 57'' E.)$



- LEGEND**
- Set 5/8" x 30" rebar with plastic cap marked "HANLEY ENGR. PLS 1817".
 - ⊙ Found 5/8" rebar w/ plastic cap marked "BGB SURVEY MARKER". Set by Ba. Co. Survey No. 10-38-154.
 - ⊙ Found 5/8" rebar with plastic cap marked "BGB SURVEY MARKER". Set by Ba. Co. Part. Plat No. P2001-006.
 - Found monument as noted.
 - () Record Data Per Ba. Co. Partition Plat No. P2001-006.
 - [] Record Data Per Ba. Co. Partition Plat No. P2002-009.
 - - - Existing Easement
 - - - New Easement

ACCESS EASEMENT CURVE TABLE

CURVE	RADIUS	DELTA ANGLE	ARC LENGTH	CHORD BEARING	CHORD LENGTH
C1	[738.20']	[00° 36' 24"]	[7.81']	[N.12° 22' 42" W.]	[7.81']
C2	[350.00']	[29° 32' 47"]	[180.49']	[N. 82° 35' 57" W.]	[178.50']

ACCESS EASEMENT LINE TABLE

LINE	BEARING	DISTANCE
L1	[S. 82° 37' 39" W.]	[201.52']
L2	[N. 67° 49' 33" W.]	[112.35']
L3	[S. 89° 57' 14" W.]	[259.56']
L4	[N. 00° 17' 23" E.]	[141.07']

NOTE

Sewage disposal shall be provided by a DEQ approved sanitary sewage disposal system for each parcel.

REGISTERED PROFESSIONAL LAND SURVEYOR
Thomas J. Hanley
 OREGON
 JULY 13, 1979
 THOMAS J. HANLEY
 1817

Renews June 30, 2015