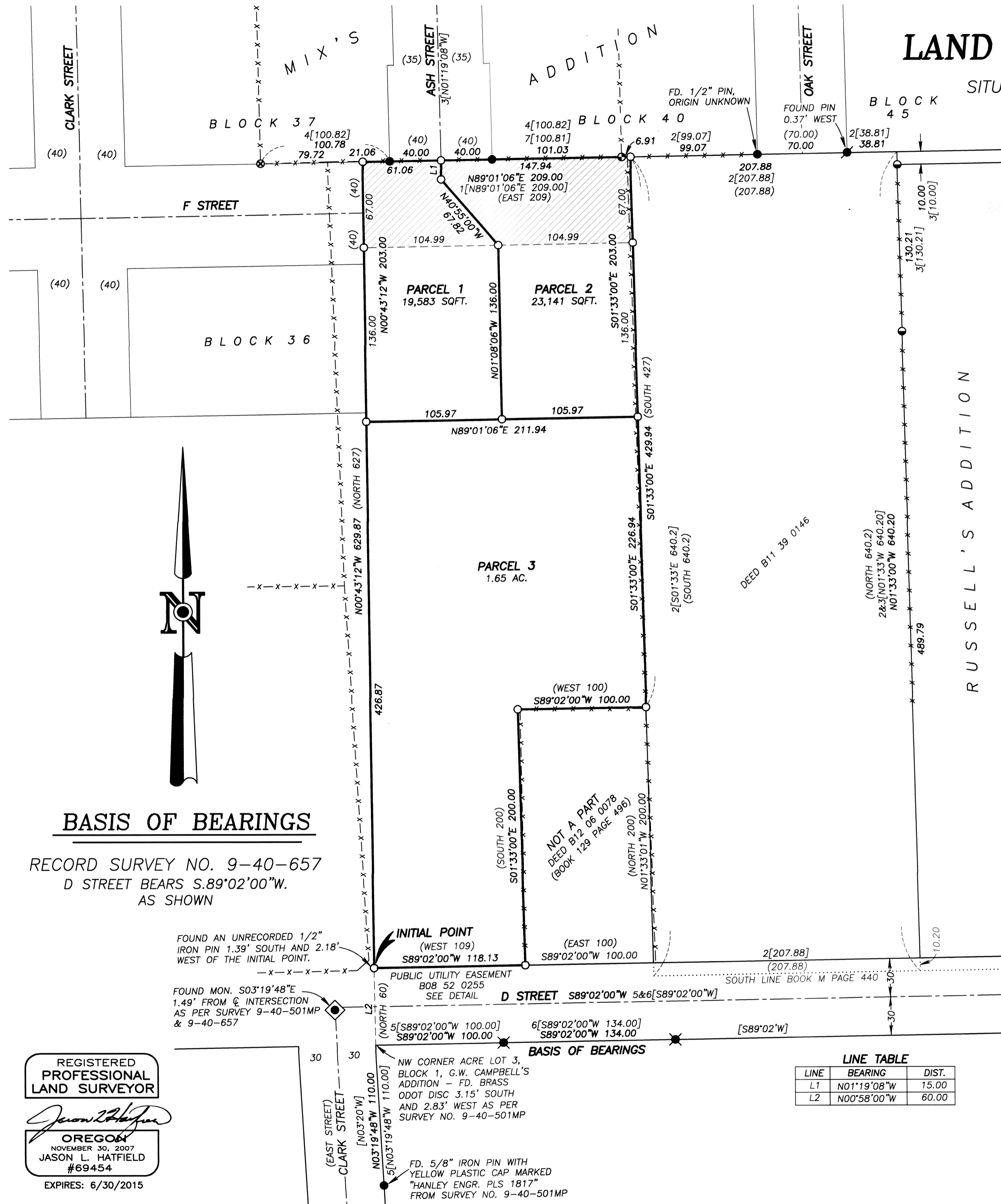


LAND PARTITION PLAT NO. P2014-001

SITUATED IN THE NE1/4NW1/4 SECTION 16, T.9S., R.40E., W.M., BAKER CITY, BAKER COUNTY, OREGON

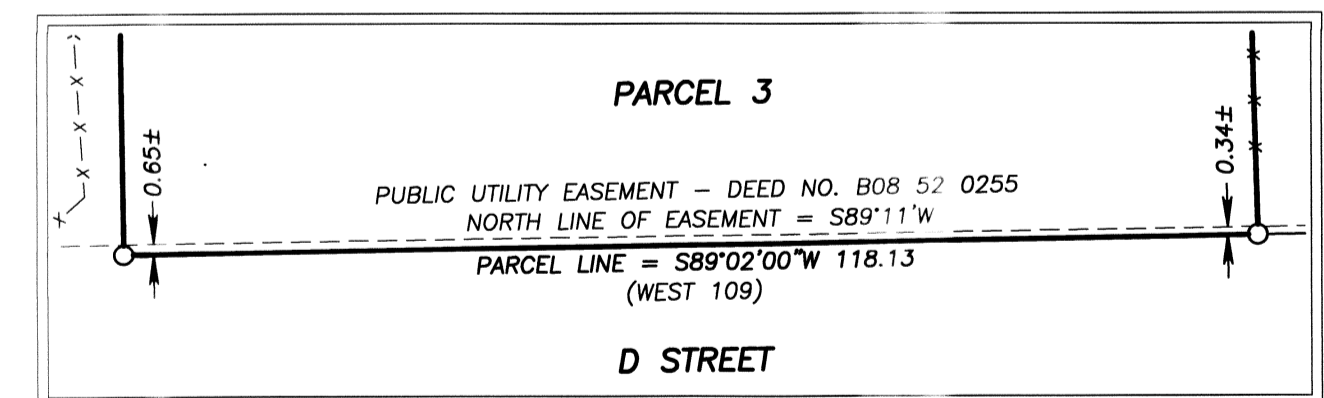


LEGEND

- ◆ FOUND 5/8" IRON PIN WITH ATTACHED ALUMINUM CAP MARKED "ODOT" IN A CAST IRON CITY MON CASE - SURVEY NO. 9-40-682
- FOUND 5/8" IRON PIN WITH ATTACHED YELLOW PLASTIC CAP MARKED "HANLEY ENGR PLS 1206" FROM SURVEY NO. 9-40-416 UNLESS OTHERWISE NOTED
- FOUND 5/8" IRON PIN WITH ATTACHED YELLOW PLASTIC CAP MARKED "HANLEY ENGR PLS 1206" SHOWN AS FOUND ON MAP OF SURVEY NO. 9-40-201
- FOUND 5/8" IRON PIN WITH ATTACHED YELLOW PLASTIC CAP MARKED "PLS 645" FROM SURVEY NO. 9-40-551
- FOUND 1/2" IRON PIN WITH ATTACHED YELLOW PLASTIC CAP MARKED "PLS 645" FROM SURVEY NO. 9-40-551
- ⊗ FOUND 1/8" BRASS DISC MARKED "ODOT" GROUTED INTO CONCRETE FROM SURVEY NO. 9-40-682
- ⊗ FOUND UNRECORDED 5/8" IRON PIN WITH ATTACHED YELLOW PLASTIC CAP MARKED "HANLEY ENGR PLS 1817" - SEE NARRATIVE
- SET 5/8"x30" IRON PIN WITH ATTACHED YELLOW PLASTIC CAP MARKED BENCHMARK SURVEYING
- () DEED AND/OR PLAT RECORD BEARING AND DISTANCE
- [] RECORD BEARING AND DISTANCE FROM SURVEY NO. 9-40-130BC
- 1[] RECORD BEARING AND DISTANCE FROM SURVEY NO. 9-40-175BC
- 2[] RECORD BEARING AND DISTANCE FROM SURVEY NO. 9-40-201
- 3[] RECORD BEARING AND DISTANCE FROM SURVEY NO. 9-40-264
- 4[] RECORD BEARING AND DISTANCE FROM SURVEY NO. 9-40-416
- 5[] RECORD BEARING AND DISTANCE FROM SURVEY NO. 9-40-501MP
- 6[] RECORD BEARING AND DISTANCE FROM SURVEY NO. 9-40-657
- 7[] RECORD BEARING AND DISTANCE FROM SURVEY NO. 9-40-551
- x-x-x FENCE LINE
- ▨ NEW EASMENT FOR UTILITIES AND FUTURE ROAD PURPOSES. SEE DECLARATION ON SHEET 2.

DETAIL

NOT TO SCALE



BASIS OF BEARINGS

RECORD SURVEY NO. 9-40-657
D STREET BEARS S.89°02'00"W.
AS SHOWN

FOUND AN UNRECORDED 1/2" IRON PIN 1.39' SOUTH AND 2.18' WEST OF THE INITIAL POINT.

FOUND MON. S03°19'48"E 1.49' FROM C INTERSECTION AS PER SURVEY 9-40-501MP & 9-40-657

INITIAL POINT (WEST 109)
S89°02'00"W 118.13

PUBLIC UTILITY EASEMENT B08 52 0255 SEE DETAIL

5[S89°02'00"W 100.00] S89°02'00"W 100.00
6[S89°02'00"W 134.00] S89°02'00"W 134.00

NW CORNER ACRE LOT 3, BLOCK 1, G.W. CAMPBELL'S ADDITION - FD. BRASS ODOT DISC 3.15' SOUTH AND 2.83' WEST AS PER SURVEY NO. 9-40-501MP

FD. 5/8" IRON PIN WITH YELLOW PLASTIC CAP MARKED "HANLEY ENGR. PLS 1817" FROM SURVEY NO. 9-40-501MP

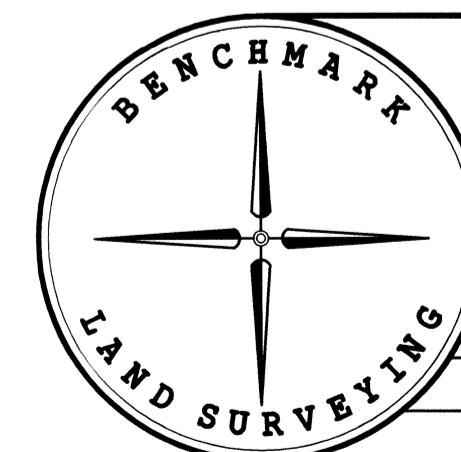
LINE TABLE

LINE	BEARING	DIST.
L1	N01°19'08"W	15.00
L2	N00°58'00"W	60.00

REGISTERED PROFESSIONAL LAND SURVEYOR

Jason L. Hatfield
OREGON
NOVEMBER 30, 2007
JASON L. HATFIELD
#69454

EXPIRES: 6/30/2015



BENCHMARK LAND SURVEYING
217 N. CANYON BLVD. JOHN DAY, OREGON
2101 MAIN STREET, STE 223 BAKER CITY, OREGON
541-575-1251 ~ 800-699-0516

LAND PARTITION
SITUATED IN THE NE1/4NW1/4 SECTION 16, T.9S., R.40E., W.M., BAKER CITY, BAKER COUNTY, OREGON

SURVEYED FOR	STEVE AND KRISTI HARRIS	
SURVEYED BY	JLH	2/15/2014
SCALE: 1" = 60'	DRAWN BY: JLH	SHEET 1 OF 2