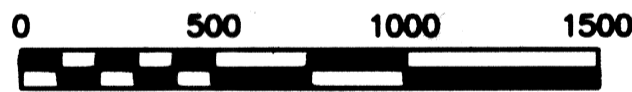
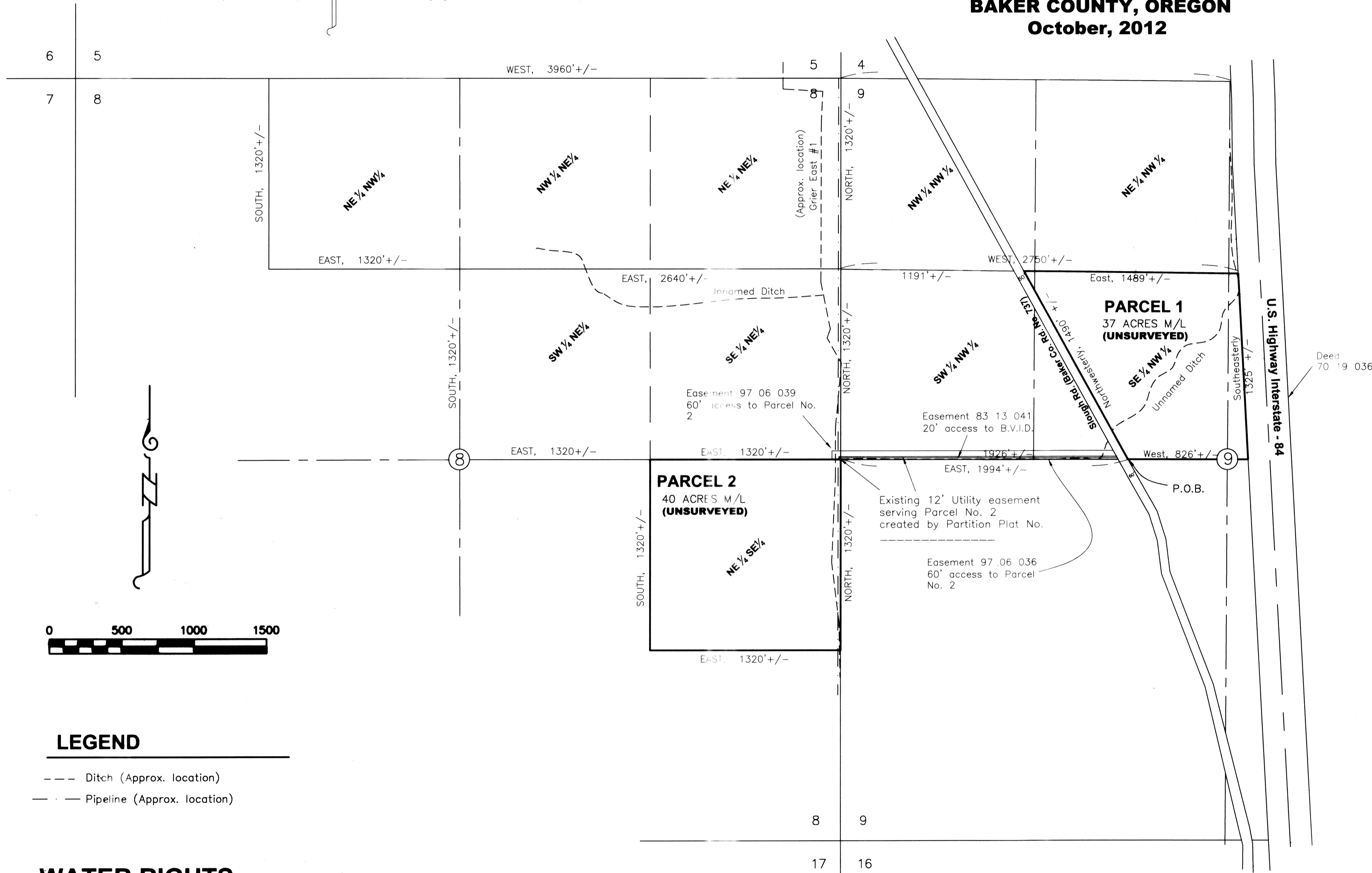


PARTITION PLAT NO. P2012-008

PARTITION OF UNSURVEYED LAND LOCATED IN SECTIONS 8 AND 9, T. 8 S., R. 40 E., WILLAMETTE MERIDIAN, BAKER COUNTY, OREGON October, 2012

HANLEY ENGINEERING, INC.
P.O. BOX 701, 2043 MAIN STREET, BAKER CITY, OREGON 97814 (541) 523-3803



LEGEND

- Ditch (Approx. location)
- Pipeline (Approx. location)

WATER RIGHTS

The following water rights are appurtenant to this partition:

- | | |
|-------------------|---------------|
| Primary: | Supplemental: |
| C - 73561 | C - 73999 |
| T - 8604 Inchoate | |

HANLEY ENGINEERING, INC.
2043 MAIN STREET
BAKER CITY, OREGON

REGISTERED
PROFESSIONAL
LAND SURVEYOR

Thomas J. Hanley
OREGON
JULY 13, 1979
THOMAS J. HANLEY
1817

Renews June 30, 2013