

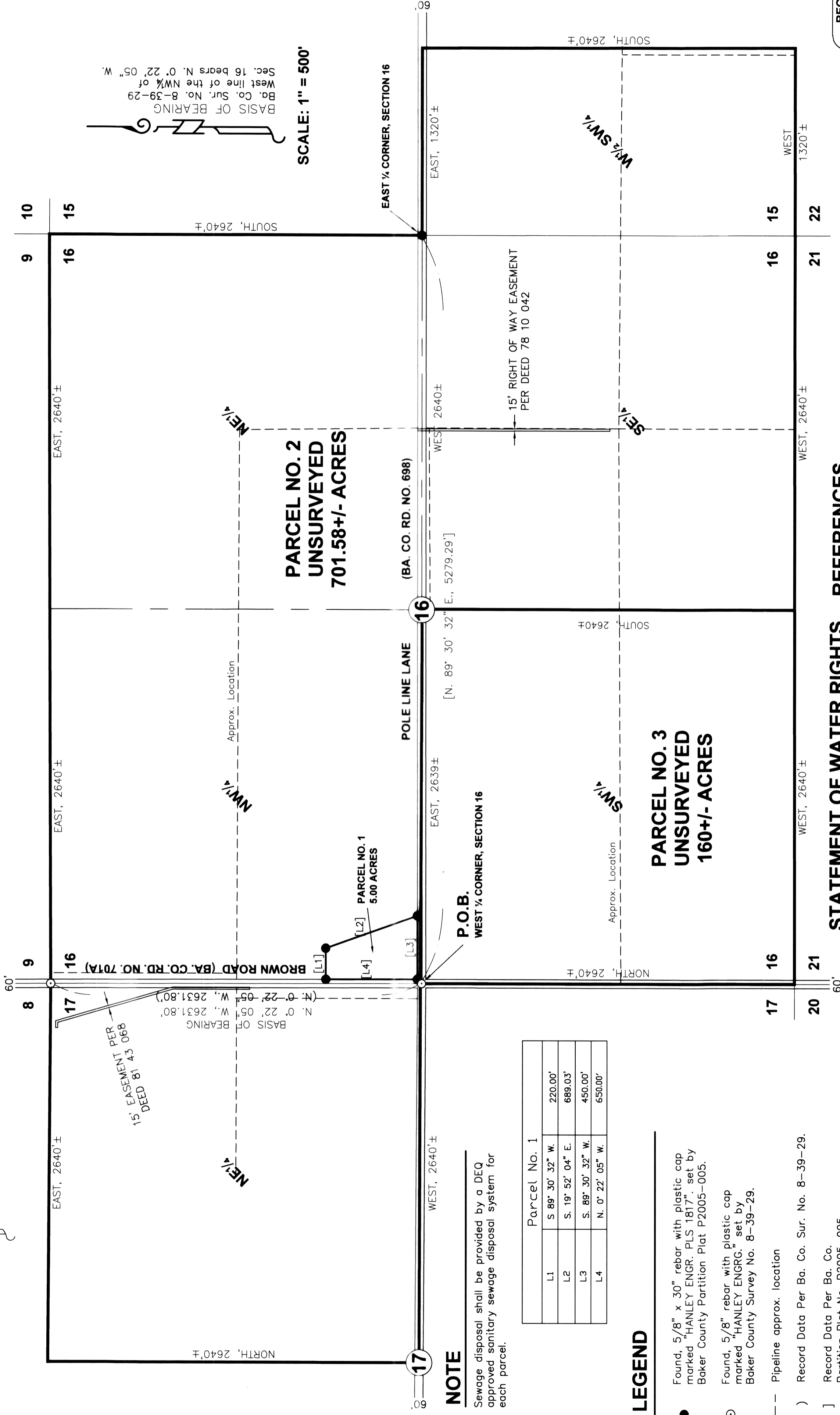
HANLEY ENGINEERING, INC.

P.O. BOX 701, 2043 MAIN STREET, BAKER CITY, OREGON 97814 (541) 523-3803

REPLAT NO. P2012-007

**REPLAT OF UNSURVEYED PARCEL TWO OF PARTITION PLAT NO. P2005-005.
LAND LOCATED IN SECTIONS 15, 16, 17, T. 8 S., R. 39 E.,
WILLAMETTE MERIDIAN, BAKER COUNTY, OREGON.
OCT. 15, 2012**

T. 8 S., R. 39 E., W.M.



NOTE

Sewage disposal shall be provided by a DEQ approved sanitary sewage disposal system for each parcel.

Parcel No. 1	
L1	S. 89° 30' 32" W. 220.00'
L2	S. 19° 52' 04" E. 689.03'
L3	S. 89° 30' 32" W. 450.00'
L4	N. 0° 22' 05" W. 650.00'

LEGEND

- Found, 5/8" x 30" rebar with plastic cap marked "HANLEY ENGR. PLS 1817", set by Baker County Partition Plat P2005-005.
- Found, 5/8" rebar with plastic cap marked "HANLEY ENGRG." set by Baker County Survey No. 8-39-29.
- Pipeline approx. location
- () Record Data Per Ba. Co. Sur. No. 8-39-29.
- [] Record Data Per Ba. Co. Partition Plat No. P2005-005.

STATEMENT OF WATER RIGHTS

The following water rights are appurtenant to this partition plat:

81123	Primary
T-9613	Primary
52712	Supplemental
52848	Supplemental
52849	Supplemental
T-10134	Supplemental

REFERENCES

Baker County Partition Plat No. P2005-05	Baker County Deed No. B05 13 0062
Baker County Survey No. 8 39 29	Baker County Deed No. B05 29 0382
Baker County Deed Bk. 60 Pg. 522	Baker County Deed No. B05 29 0386
Baker County Deed No. 78 10 042	Baker County Deed No. B05 29 0374
Baker County Deed No. 79 30 179	Baker County Deed No. B05 50 0317
Baker County Deed No. 81 43 068	Baker County Staff Report: RP-12-001
Baker County Deed No. 85 03 065	Elkhorn Title Company Report: File No. 00019910

REGISTERED PROFESSIONAL LAND SURVEYOR

THOMAS J. HANLEY
JULY 13, 1979
1817

Renews June 30, 2013