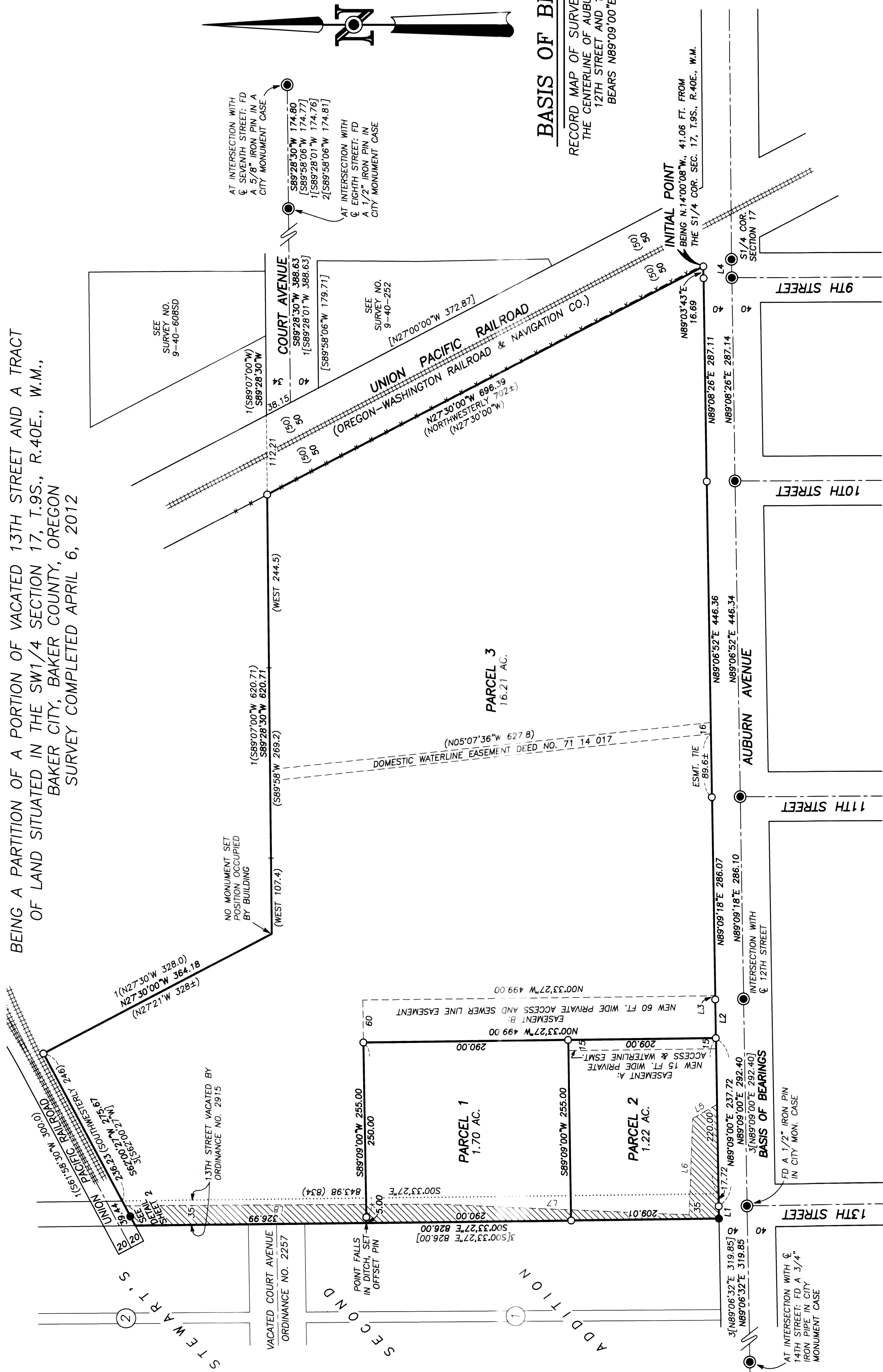


LAND PARTITION PLAT NO. P2012-001

BEING A PORTION OF A PORTION OF VACATED 13TH STREET AND A TRACT OF LAND SITUATED IN THE SW1/4 SECTION 17, T.9S., R.40E., W.M., BAKER CITY, BAKER COUNTY, OREGON SURVEY COMPLETED APRIL 6, 2012



BASIS OF BEARINGS

RECORD MAP OF SURVEY NO. 9-40-699 THE CENTERLINE OF AUBURN AVE. BETWEEN 12TH STREET AND 13TH STREET BEARS N89°09'00"E AS SHOWN



REFERENCES

- RECORD MAP OF SURVEY NO.'S 9-40-252, 9-40-275, 9-40-281, 9-40-318, 9-40-478, 9-40-608SD AND 9-40-689 BAKER CITY SURVEY NO. AD-21-54 BY PHILLO ANDERSON
- UNRECORDED PHILLO ANDERSON SURVEY FOR STODDARD LUMBER COMPANY
- DEED RECORD INSTRUMENT NO.'S 74 47 020, 76 27 045, 88 26 008 AND 95 46 072
- AMERITITLE ORDER NO. 29790
- BAKER CITY ORDINANCE NO.'S 2257 & 2915
- PLAT OF STEWART'S SECOND ADDITION TO BAKER CITY OREGON-WASHINGTON R.R. DRAWING NO. 54498 DATED 5/23/45

EASEMENT LINE TABLE

LINE	BEARING	LENGTH
L5	N50°13'00"W	40.00
L6	N87°45'00"W	136.00
L7	N02°34'29"E	357.01
L8	N00°10'30"W	442.00

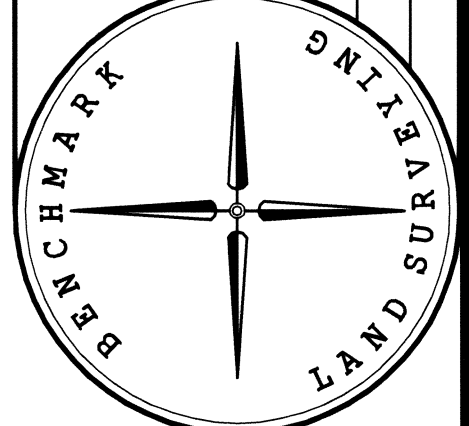
LINE TABLE

LINE	BEARING	LENGTH
L1	S89°08'32"W	17.28
L2	N89°09'00"E	54.70
L3	N89°09'18"E	5.30
L4	N89°03'43"E	26.00

REGISTERED PROFESSIONAL LAND SURVEYOR

Jason M. Hatfield
JASON M. HATFIELD
#69454

EXPIRES: 6/30/2013



BENCHMARK LAND SURVEYING
217 N. CANYON BLVD., JOHN DAY, OREGON
2101 MAIN STREET, STE 223 BAKER CITY, OREGON
541-575-1251 ~ 800-699-0516

LAND PARTITION BEING A PORTION OF A PORTION OF VACATED 13TH STREET AND A TRACT OF LAND SITUATED IN THE SW1/4 SECTION 17, T.9S., R.40E., W.M., BAKER CITY, BAKER COUNTY, OREGON

SURVEYED FOR: ELLINGSON LUMBER CO.
SURVEYED BY: JLH
SCALE: 1"=100'
DRAWN BY: JLH
4/6/12
SHEET 1 OF 2