

REPLAT NO. P2011-008

A SURVEY LOCATED IN THE SOUTHEAST QUARTER OF THE NORTHWEST QUARTER OF SECTION 16, TOWNSHIP 9 SOUTH, RANGE 40 EAST, WILLAMETTE MERIDIAN, IN BLOCK 1 OF J.J. CAMPBELL'S ADDITION TO BAKER CITY, BAKER COUNTY, OREGON,

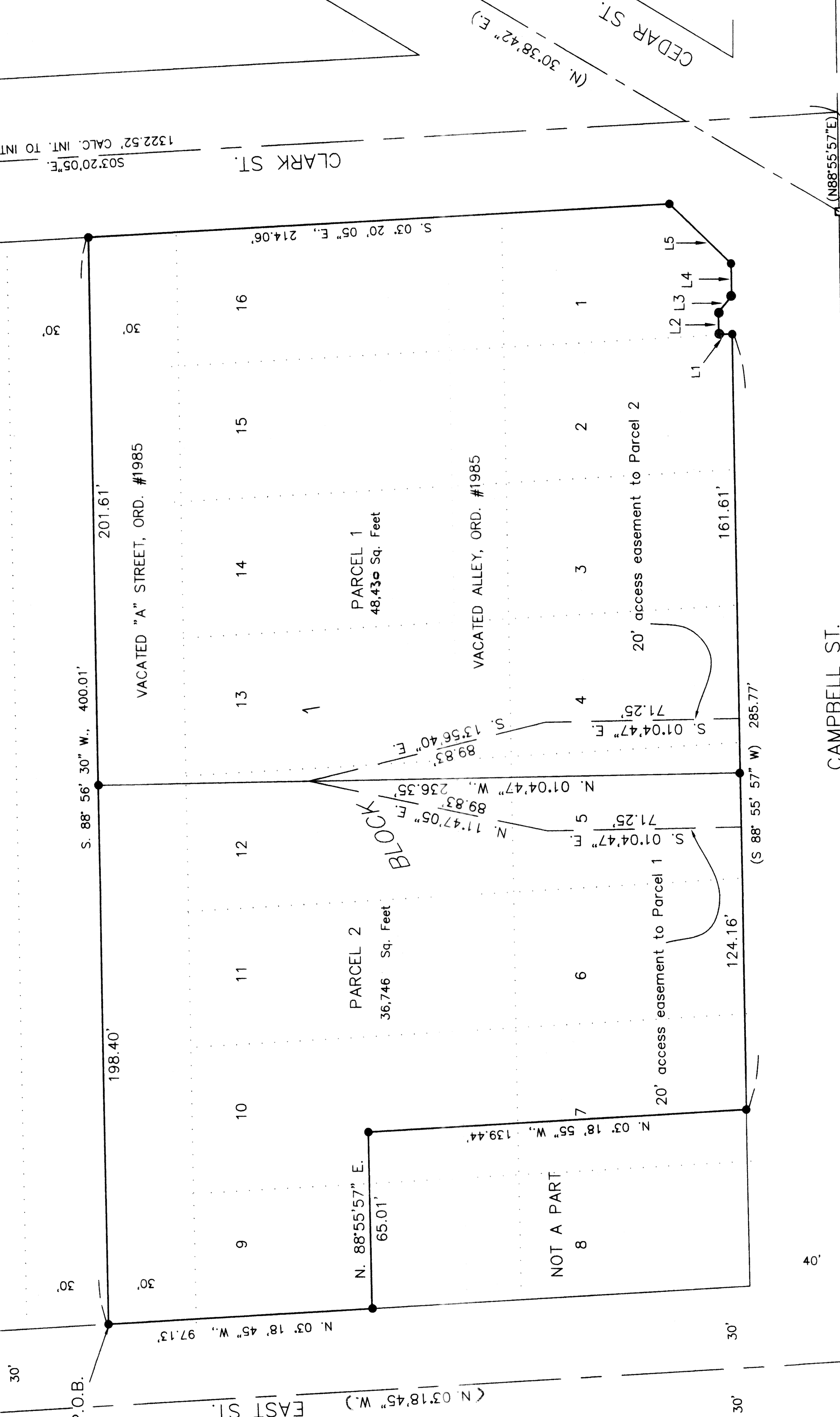
NOTE: FOUND MONUMENT PERPETUATION OF PREVIOUS MONUMENT BEARING S03°19'48"E, 1.47', FROM THE TRUE INTERSECTION OF "D" STREET AND CLARK STREET AS PER SURVEY 9-40-130BC

FND 5/8" IR IN MON BOX W/ ALUMINIUM CAP MARKED "000T"

BASIS OF BEARING
CAMPBELL STREET BETWEEN GROVE STREET AND CEDAR STREET BEARS N88°55'57"E



HANLEY ENGINEERING, INC.
P.O. BOX 701, 2042 MAIN STREET, BAKER CITY, OREGON 97603 (541) 332-3803



LINE TABLE

LINE	BEARING	DISTANCE
L1	N. 01° 04' 03" W.	5.00'
L2	N. 88° 55' 57" E.	8.00'
L3	S. 51° 15' 43" E.	7.81'
L4	N. 88° 55' 57" E.	12.00'
L5	N. 43° 55' 57" E.	31.71'

LEGEND

- () - SURVEY NO. 9-40-130BC
- - FOUND MONUMENT IN BOX AS NOTED.
- - SET 5/8" X 30" LONG IRON ROD W/ YPC MARKED "HANLEY ENGR, PLS 1817".

SURVEY BY:

HANLEY ENGINEERING, INC.
THOMAS J. HANLEY, PLS 1817
P.O. BOX 701
BAKER CITY, OR 97814
(541) 523-3803

SURVEY FOR:

DON LILYQUIST
MAVERIK, INC.

REGISTERED PROFESSIONAL LAND SURVEYOR
Thomas J. Hanley
OREGON
 JULY 13, 1979
 THOMAS J. HANLEY
 1817

Renews June 30, 2013