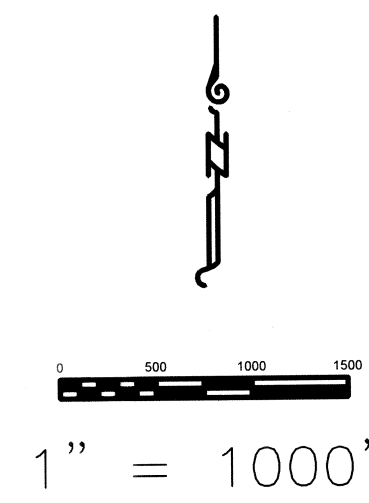
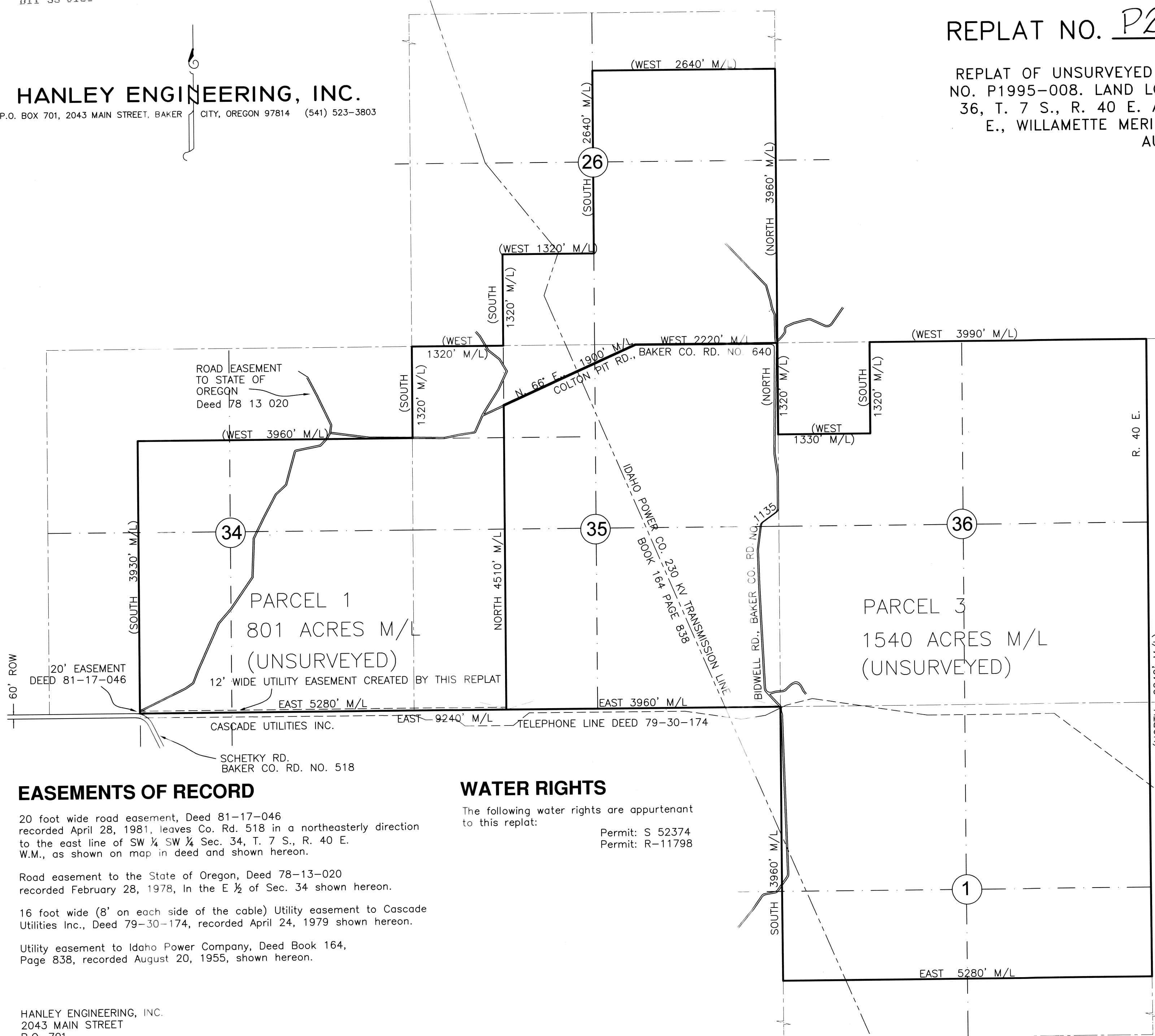


REPLAT NO. P2011-006

REPLAT OF UNSURVEYED PARCEL ONE OF PARTITION PLAT NO. P1995-008. LAND LOCATED IN SECTIONS 26,34,35 AND 36, T. 7 S., R. 40 E. AND IN SECTION 1, T. 8 S. R. 40 E., WILLAMETTE MERIDIAN, BAKER COUNTY, OREGON. AUGUST, 2011

HANLEY ENGINEERING, INC.
P.O. BOX 701, 2043 MAIN STREET, BAKER CITY, OREGON 97814 (541) 523-3803



EASEMENTS OF RECORD

- 20 foot wide road easement, Deed 81-17-046 recorded April 28, 1981, leaves Co. Rd. 518 in a northeasterly direction to the east line of SW ¼ SW ¼ Sec. 34, T. 7 S., R. 40 E. W.M., as shown on map in deed and shown hereon.
- Road easement to the State of Oregon, Deed 78-13-020 recorded February 28, 1978, in the E ½ of Sec. 34 shown hereon.
- 16 foot wide (8' on each side of the cable) Utility easement to Cascade Utilities Inc., Deed 79-30-174, recorded April 24, 1979 shown hereon.
- Utility easement to Idaho Power Company, Deed Book 164, Page 838, recorded August 20, 1955, shown hereon.

WATER RIGHTS

The following water rights are appurtenant to this replat:
 Permit: S 52374
 Permit: R-11798

LEGEND

() Record data per Baker County Partition Plat No. P1995-008

REGISTERED PROFESSIONAL LAND SURVEYOR
Thomas J. Hanley
 OREGON
 JULY 13, 1979
 THOMAS J. HANLEY
 1817

Renews June 30, 2013

HANLEY ENGINEERING, INC.
2043 MAIN STREET
P.O. 701
BAKER CITY, OREGON