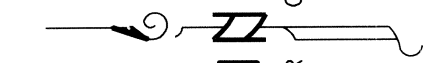


HANLEY ENGINEERING, INC.

P.O. BOX 701, 2043 MAIN STREET, BAKER CITY, OREGON 97814 (541) 523-3803



REPLAT NO. P2011-006

REPLAT OF UNSURVEYED PARCEL ONE OF PARTITION PLAT NO. P1995-008. LAND LOCATED IN SECTIONS 26,34,35 AND 36, T. 7 S., R. 40 E. AND IN SECTION 1, T. 8 S. R. 40 E., WILLAMETTE MERIDIAN, BAKER COUNTY, OREGON. AUGUST, 2011

ROAD EASEMENT TO STATE OF OREGON Deed 78 13 020

20' EASEMENT DEED 81-17-046

PARCEL 1
801 ACRES M/L
(UNSURVEYED)

12' WIDE UTILITY EASEMENT CREATED BY THIS REPLAT

CASCADE UTILITIES INC.

SCHETKY RD. BAKER CO. RD. NO. 518

EASEMENTS OF RECORD

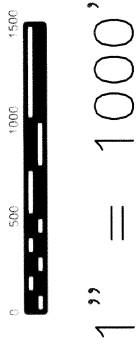
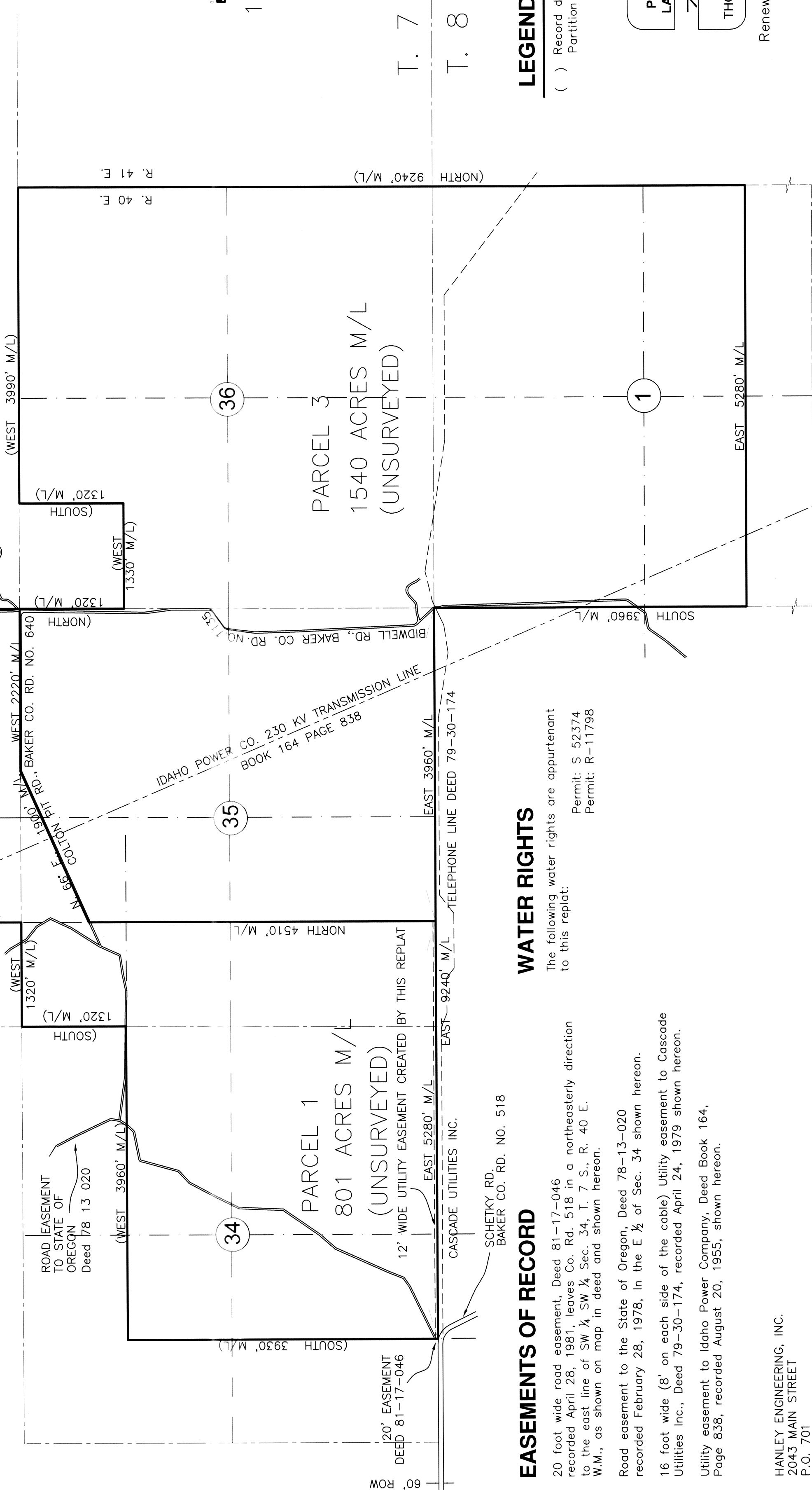
20 foot wide road easement, Deed 81-17-046 recorded April 28, 1981, leaves Co. Rd. 518 in a northeasterly direction to the east line of SW ¼ SW ¼ Sec. 34, T. 7 S., R. 40 E. W.M., as shown on map in deed and shown hereon.

Road easement to the State of Oregon, Deed 78-13-020 recorded February 28, 1978, in the E ½ of Sec. 34 shown hereon.

16 foot wide (8' on each side of the cable) Utility easement to Cascade Utilities Inc., Deed 79-30-174, recorded April 24, 1979 shown hereon.

Utility easement to Idaho Power Company, Deed Book 164, Page 838, recorded August 20, 1955, shown hereon.

HANLEY ENGINEERING, INC.
2043 MAIN STREET
P.O. 701
BAKER CITY, OREGON



1" = 1000'

T. 7 S.
T. 8 S.

WATER RIGHTS

The following water rights are appurtenant to this replat:

Permit: S 52374
Permit: R-11798

LEGEND

() Record data per Baker County Partition Plat No. P1995-008

REGISTERED PROFESSIONAL LAND SURVEYOR

THOMAS J. HANLEY
JULY 13, 1978
1817

Renews June 30, 2013